

The Athena Cats Proudly Present

..... The World Premiere Comedy... ..

# ASHES TO ASHES

Written by

**Debbie Bolsky**

Directed by

**Katherine James**

.....STARRING.....

**Lena Bouton, Michael Uribes\*, Kevin Young\***

Executive Producer

Laurel Wetzork, The Athena Cats

Produced by

Racquel Lehrman, Theatre Planners

Scenic Designer

Pete Hickok

Costume Designer

Kate Bergh

Lighting Designer

Stacy McKenney Norr

Projection Designer

Nick Santiago

Sound Designer

Cricket S. Myers

Property Designer

Michael Allen Angel

Assistant Producer

Misha Riley,

Theatre Planners

Graphic Designer

Kiff Scholl,

AFK Design

Social Media Strategist

Cindy Marie Jenkins

Casting Associate

Richie Ferris, CSA

Press Photographer

Ed Krieger

Casting Director

Michael Donovan, CSA

Publicist

Lucy Pollak

Stage Manager

Karen Osborne

\*Appearing courtesy of Actors' Equity Association



**PLACE**

Airplane, various locations in Europe

**TIME**

16 days, 21 hours, and 32 minutes in July, 2017.

.... There will be no intermission ....

There is no recording or photography allowed during the performance.

.... **A Note from the Director** ....

“The course of true love never did run smooth.”

–William Shakespeare, *A Midsummer Night’s Dream*

“That’s what makes it a true adventure.” –Debbie Bolsky, *Ashes to Ashes*

How do you know when you’ve fallen in love forever and ever? And what if you screwed up and didn’t figure it out the first time around? Is it possible to have a true love “do over”? Poets, Playwrights and Incurable Romantics of every stripe have been trying to answer these questions since the dawn of time. Some answer them darkly (can you spell Silas Marner?). Thank heavens Debbie Bolsky joins forces with those who over the eons have answered them with laughter. I first fell in love with Sara, Jefferson, and The Guide in the summer of 2015 when Debbie was developing the play in Jennie Webb’s Dramaturgy Workshop at The Will Geer Theatricum Botanicum. Debbie’s madcap sense of humor, love of the great screwball comedies of the 1930’s, and heartfelt understanding of the journey of life had me at “hello”. Deep in my heart I knew I had fallen in love with this play and wanted to be a part of it. Forever and ever. With the undying support of The Athena Cats (of which I am a proud contributor) and the brilliant production team of Theatre Planners we were able to create a true theatrical collaboration. A million rewrites, a workshop, an inclusive rehearsal process that called on the big creative brains of actors, producers, designers, stage manager...the unique process of bringing *Ashes to Ashes* to life has been this theatre artist’s dream come true. Thanks forever to The Athena Cats’ founders, Debbie Bolsky and Laurel Wetzork, and their vision of a world filled with productions created by female playwrights and directors. Finally, gentle theatre goer, as the world has grown darker and less funny to many of us...we look to the theatre to give us a respite of a few hours where we can find hope, love, and a place where we can freely exercise our sense of humor. Kick back, relax and enjoy the ride!



.... **CAST** ....

(in alphabetical order)

LENA BOUTON.....	Sara Moresly
MICHAEL URIBES* .....	The Guide
KEVIN YOUNG* .....	Jefferson Campbell

.... **A Note from the Playwright** ....

I have always loved the screwball comedy genre, romantic comedies that take you right to the edge and make you laugh out loud. But since everything I write usually revolves around death, politics and sometimes baseball, I felt it was time to explore laughter (okay, there's some death in here but nobody actually dies on stage!). *Ashes to Ashes* is my homage to screwball comedies.

With everything that is going on in our country right now many people have lost their ability to have civil discussions about our political differences... families and friends even split up over these disagreements. We are living in such stressful times right now that I think laughter is especially needed.

People experience and handle loss in many different ways, especially if you didn't have the chance to say goodbye. For example, I put Trista, my beloved cat's urn in front of the TV to watch the Jacksonville Jaguars games on Sundays because when she was alive she used to sit next to me and watch them. I still talk to my friend Paul's picture even though he's been dead for over twenty years. I know he's gone but it gives me comfort to talk to him. In the beginning it helped me work through my grief, guilt and anger, and now it just makes me feel good, like I'm talking to an old friend. As far as I'm concerned, a part of him is still here, at least within me.

The ex-couple I created, Sara and Jefferson, find their hatred of each other is trumped by their love for their newly deceased best friends, whose ashes they have to sprinkle together. And Kate and Wilson want this ex-couple to get back together so badly that a little thing like dying was not going to stop their plan. Sara and Jefferson feel that a part of their friends will always be with them, no matter what.

In most of my works I include death as a trigger point because it is the one thing we can all count on happening. Death also causes a litany of emotions in those left behind. Although we start out with a death in *Ashes to Ashes*, this is really about love and friendship and the joys that come out of that. I hope as you watch this you will laugh with Sara, Jefferson, and The Guide and think about friends, here and gone, and smile at the good memories. And please, do not think too much about the divisive rhetoric out there because that may just aggravate you. Instead, if you can, think about joy, love, and peace.

Thank you.

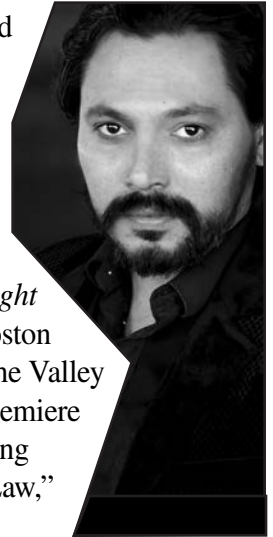


.... **CAST BIOS** ....  
(in alphabetical order)

**LENA BOUTON (Sara Moresly)** Lena Bouton is an actor, writer, and producer who loves cats and tennis! She first fell in love with acting and comedy on the stage and the love affair continues. She was awarded a Scenie for Best Lead Actress in a Comedy for her role in *6 RMS RIV VU* at the Sierra Madre Playhouse and has most recently been seen on stage in the comedies *Last Men On Earth* and *West Destiny* at ZJU. She is beyond excited and grateful to be working with the talented and classy Athena Cats on *Ashes to Ashes!* For more credits and info visit [www.lenabouton.com](http://www.lenabouton.com).



**MICHAEL URIBES\* (The Guide)** Michael Uribes is thrilled to be returning to Theatre Planners after being in their world premiere of Neil Koenigsberg's *Off The King's Road*, as well as their wildly fun production of *Future Sex Inc.* Theater credits: the title role in *Hamlet* for the Las Vegas Shakespeare Company, *Man of La Mancha* (The Duke) *Picasso at the Lapin Agile* (Picasso), *Rosencrantz and Guildenstern are Dead* (Guildenstern), and *Twelfth Night* (Tranio). *Camino Real* (Kilroy), *Oedipus El Rey* at The Boston Court (Choro) *Candida* (Eugene). He was nominated for the Valley Theatre League Award for his performance in the world premiere musical *Musical Chairs* written by Academy Award winning composer Joel Hirschorn. Film and TV credits: "Harry's Law," "America's Most Wanted," "Dick Night."



**KEVIN YOUNG\* (Jefferson Campbell)** Kevin is thrilled to be making his West Coast theater debut with this amazing theater company. He is a 2001 graduate of Webster Conservatory and a proud member of Actors' Equity Association. Regional credits include: Tom in *Glass Menagerie* (Performance Network), Lady Enid in *The Mystery of Irma Vep* (Tipping Point Theatre), Clown in *The 39 Steps* (Meadow Brook Theatre) and Katurian in *The Pillowman* (Breathe Art Theatre). Kevin can be seen in the feature film "Oceans Rising," and on this season of



ID's "Married with Secrets." Kevin would like to thank the amazing team at the Athena Cats for this great opportunity!

## .... PRODUCTION TEAM ....

**DEBBIE BOLSKY (Playwright)** Debbie Bolsky is a playwright and screenwriter as well as co-founder of the theatrical collective The Athena Cats. Debbie has written eleven stage plays and screenplays that feature strong and layered roles for women and explores themes of death, baseball, and politics. Her stage play *Biking with Andrew Scott* enjoyed a successful run in Los Angeles in 2008. She was executive producer of The Athena Cats' first production *Blueprint for Paradise* (in association with Theatre Planners), which had a successful run at the Hudson Theatre Mainstage in the summer of 2016. Bolsky's past experience and expertise in film is multi-faceted, having worked as Associate Producer on Laurel Wetzork's independent film "Rogues" (2003), as Executive Producer on Katie Rogers documentary, "Carless In L.A." (2016), and as Vice President, Media Advertising at Columbia Pictures (Sony Pictures Entertainment). Bolsky is an active member of the Dramatists Guild of America, International Centre for Women Playwrights (ICWP), The Alliance of Los Angeles Playwrights (ALAP), New Play Exchange, Film Independent and a contributor and associated with the Los Angeles Female Playwrights Initiative (LA FPI).

**KATHERINE JAMES (Director)** Katherine James (MFA from A.C.T.) is an Athena Cats Contributor and is thrilled to be directing *Ashes to Ashes*. Katherine's favorite thing about The Athena Cats? That they honor and recognize and help her utilize all of her theatre passions: as a playwright, a director and an actor. Katherine has been in the theatre since her father first put her onstage in one of his shows at the age of five. She currently makes her home in Los Angeles where she is part of the Theatricum Botanicum Company and on The Seedlings (new plays) Committee. She was thrilled to act in one of the many readings leading up to Athena Cats' production of *Blueprint For Paradise*. She loved directing three plays in Athena Cats' New Works Festival (2017 Spring) including her own play *Muse Me*. She played Amanda in last season's much lauded production of *The Glass Menagerie* at The Sierra Madre Playhouse. Katherine

simply loves Athena Cats dedication to female theatre artists, and her list of current and immediate past projects shows just that: recent writing projects for pro-women's and girls theatres include multiple productions of her play, *The Plan* including The GLO Project and Hall Pass. Katherine has been happy directing for GLO as well. Several of her shows have been produced as part of Little Black Dress Ink including this season's finalist *Zero-Six-Two-Eight*. A proud member of LA FPI, her company, Free Association Theatre, has helped produce L.A.'s Swan Day. [www.katherinejamesplays.com](http://www.katherinejamesplays.com)

**LAUREL WETZORK, THE ATHENA CATS (Executive Producer)**

Laurel Wetzork is co-founder of The Athena Cats, and enjoyed executive producing their first New Works Festival of short plays (Spring 2017). She's delighted to be working with Katherine and Debbie on this madcap comedy. Laurel graduated from USC with both a BA (Cinema Production) and a Master of Professional Writing (Stage and Screen), and divides her time between stage, screen, and consulting projects. Laurel's past experience is multifaceted: her feature film "Rogues" screened at four of the top 20 U.S. film festivals; her various film and stage productions include *Blueprint for Paradise*, *5 SIRENS: Beware of Rocks!*, "Shadow", "A Christmas Prayer", *Irish Mists*, "Irresistible Force", "The Forgiven", *Levels*, and *Devil Inside*; she's taught playwriting, film history, screenwriting, and film production; and has had her short fiction published. Laurel supports the LA FPI and ICWP, and is a member of the Dramatists Guild of America and Association of Writers & Writers Programs. She lives in Southern California with her husband, John, two cats, and enjoys bike touring and visits with talented and beautiful daughter Karina. [www.mojewetzorkstudios.com](http://www.mojewetzorkstudios.com) @gem2arts

**RACQUEL LEHRMAN, THEATRE PLANNERS (Producer)** Racquel is the founder and managing director of Theatre Planners, her own theatre production firm which has been serving the Los Angeles theatre scene for over ten years. She graduated from NYU-Tisch School of the Arts and lived in NY for many years producing theatre. Theatre Planners has since developed into a very busy and successful outlet for actors, writers, producers and theatre companies. Doing

everything from producing, consulting, marketing and more, Racquel loves to make productions a reality and help to keep the theatre scene in LA alive and strong. Racquel is also the owner of The Lounge Theatres and manages The Zephyr Theatre. To learn more about Racquel and Theatre Planners, go to [www.theatreplanners.com](http://www.theatreplanners.com).

**PETE HICKOK (Scenic Designer)** Pete Hickok is a Scenic Designer, Production Designer, and Sculptor based out of Los Angeles. His most recent scenic design projects include *The Red Dress*, *Please Excuse My Dear Aunt Sally*, and *Farragut North* at the Odyssey Theatre, *Die, Mommie Die!* at Celebration Theater, and *Crimes of the Heart* at the International City Theater in Long Beach. He was also recently production designer for “Medicare Mermaids” among his other ventures curating and exhibiting in the contemporary art world. He was nominated for a 2016 Ovation Award for his design of *Rio Hondo* at the Theater of NOTE, a 2017 NAACP Theatre Award for his design of *The Cause, My Soul*, and a 2017 BroadwayWorld Award for *The Cake* at The Echo Theater Company. [www.petehickokdesign.com](http://www.petehickokdesign.com)

**KATE BERGH (Costume Designer)** Kate is happy to be working with Theatre Planners again, having also designed *Please Excuse My Dear Aunt Sally* and *Transition*. Recent credits – *Chasing Mem’ries*, *Next Fall*, *Yes*, *Prime Minister* (The Geffen Playhouse), *Hopscotch*, *the Mobile Opera* (The Industry with Ann Closs-Farley), *Daytona*, *Super Variety Match Bonus Round*, *Cock* (Rogue Machine), *Twelve Angry Men*, *The Roger Miller Story*, *Six Dance Lessons....* (Laguna Playhouse), *Tribes* (Chance Theatre) *Broadway Bound* (The Odyssey Theatre), *For Piano and Harpo* (Falcon Theatre), *Gigi*, *Cabaret* (Backstage Garland Award) (Reprise Theatre), *Prisoner of Second Avenue* (El Portal Theatre), *Side Show*, *Shrek, the Musical* (3D Theatricals – Ovation Nomination), *The House in Scarsdale*, *Creation* (Theatre at Boston Court), *Amahl and the Night Visitors*, *Art*, *Sleepless in Seattle*, *Casa Valentina* (Ovation Nomination, LADCC Award) (Pasadena Playhouse). Kate works in all mediums telling stories with costumes – theater, opera, dance, film, television, and commercials.

**STACY MCKENNEY NORR (Lighting Designer)** designs in the Orange County and Los Angeles areas and has designed over 50 shows. Her most recent work includes: *The Accident* in association with the Griot Theatre at The Lounge Theater, Senor Plummer's *Finale Fiesta* with Rogue Artist Ensemble at Plummer Park, *Home, Forever Plaid*, and *Closer Than Ever* at International City Theater, *Our Town* at Irvine Barclay Theatre, *Little Women, Avenue Q* and *Into the Woods* at Cypress College, *Eurydice* at Chapman University, *The Biscuiteater* at The Electric Lodge, *Imaginary Women on a Very Short Leash* at Highways Theater, *Eurydice and Orpheus* at California State University of Los Angeles, *The Discord Altar* in association with Operaworks at The Secret Rose Theater, *Unnecessary Farce*, and *The 25th Annual Putnam County Spelling Bee* at Sierra Repertory Theatre.

**CRICKET S. MYERS (Sound Designer)** On Broadway, Cricket earned a Tony Nomination and a Drama Desk Award for her design of *Bengal Tiger at the Baghdad Zoo*. Off Broadway designs include *The Marvelous Wonderettes*. She has also designed regionally at The Geffen Playhouse, La Jolla Playhouse, The Ahmanson, The Mark Taper Forum, Berkeley Rep, Arena Stage, South Coast Rep, The Kirk Douglas Theater, and the Pasadena Playhouse. Other selected L.A. designs include East West Players, NoHo Arts Center, Ghost Road Theater Company, and The Celebration Theater. She has earned 20 Ovation Nominations, as well as winning The Kinetic Award for Outstanding Achievements in Theatrical Design, an LADCC and a Garland Award.  
[www.cricketsmyers.com](http://www.cricketsmyers.com).

**NICK SANTIAGO (Projection Designer)** Nick Santiago has worked for numerous universities and theatre companies including Skylight Theatre (*Forever House, Church & State, Obama Ology*), Rogue Machine (*A Permanent Image, Luka's Room, Honky*), USC (*Trojan Women, On the Town*), Pasadena Playhouse (*Ham*), and LA LGBT Center (*The Search for Signs of Intelligent Life Revisited*). He received an Ovation nomination and a LA Drama Critic's Circle award for his work on Rogue Machine's *A Permanent Image*.  
[www.nsantiagodesign.com](http://www.nsantiagodesign.com).



**MICHAEL ALLEN ANGEL (Property Designer)** Michael Allen Angel is a graduate of the UCLA Department of Theatre, Film, and Television. He has served as Prop Master for The Pasadena Playhouse, The Geffen Playhouse, Reprise LA, and the long running interactive theatre experience *Tamara*. He even hired himself to design props for his own short film “Broken Hart.” Recently, he took a break from props to direct *The Beauty, The Banshee & Me* written and performed by Cathy Lind Hayes. And this summer, he directed *Barrage From The Garage* (a Festival Directors’ Pick) at the 2017 Short + Sweet Hollywood Play Festival. Michael is exhilarated to be part of this Ashes to Ashes adventure. Additionally, he thanks Luis Flores Jr. for making his own life an adventure like no other.

**AFK DESIGN (Graphic Designer)** Headed by Kiff Scholl, AFK Design has a long history of designing original and eye-catching graphics for Los Angeles theatre and film productions. Long time theatre clients include the wonderful folks over at The Athena Cats, Theatre Planners, Sierra Madre Playhouse, West Coast Jewish Theatre, Indie Chi, KADM Productions, Sacred Fools, Theatre of NOTE, as well as countless independent companies. In addition to graphics, Kiff is also an award-winning actor, director and filmmaker. Like AFK Design on Facebook and follow Kiff on Twitter @afkiff. [www.KiffScholl.com](http://www.KiffScholl.com).

**MICHAEL DONOVAN, CSA (Casting Director)** Michael is the recipient of six Artios awards, given by the Casting Society of America for Outstanding Achievement in Casting. His theatre credits include shows produced at Pasadena Playhouse, the Hollywood Bowl, Walt Disney Concert Hall, the Geffen Playhouse, the Kirk Douglas Theatre, La Jolla Playhouse, International City Theatre, Ebony Repertory Theatre, the Getty Villa, Laguna Playhouse, the Falcon Theatre, the Colony Theatre, The Theatre @ Boston Court, the 24th St. Theatre, Ensemble Theatre of Santa Barbara, San Francisco Symphony, Arizona Theatre Company, Arkansas Rep, the Totem Pole Playhouse, and the Kentucky Shakespeare Festival, as well as several national tours. Michael has cast numerous independent films, more than a dozen TV series, and over 1,000 commercials. Michael is the Co-Artistic Director

for Reprise 2.0, and serves on the Board of Directors for both the Foundation for New American Musicals, and Camp Bravo. Michael teaches at various venues throughout the Los Angeles area, including UCLA.

**MISHA RILEY, THEATRE PLANNERS (Assistant Producer)** Misha Riley is originally from Northern California and holds a B.A. in Theater from the UCLA School of Theater, Film and Television. While at UCLA Misha specialized in both Theater Studies and Acting, performing in multiple productions including *The Revenger's Tragedy*, directed by Lisa Wolpe. He was also chosen to participate in UCLA's inaugural Professional Theater Practicum class, hosted in tandem with The Geffen Playhouse. Misha is thrilled to be part of the Theatre Planners' team and to reunite with The Athena Cats after last years' *Blueprint for Paradise*. A huge thank you to my family, Simone, and Racquel. To learn more about Theatre Planners, go to [www.theatreplanners.com](http://www.theatreplanners.com).

**CINDY MARIE JENKINS (Social Media Strategist)** Cindy is a Storyteller & Outreach Nerd from Los Angeles, currently a Write-at-Home-Mom in Orlando for cool reasons that require multiple NDAs to explain. She is Communications Director at 24<sup>th</sup> Street Theatre and Staff Writer at Nook Real Estate. Her current project is a re-telling of *Hamlet* from Horatio's point of view and *The Oresteia* from Electra's. She divides her personality into Twitter accounts such as @CindyMarieJ, @FairyFolkMyth and @ParentingNerd (NSFW). <https://cindymariejenkins.com/>

**KAREN OSBORNE (Stage Manager)** Karen Osborne is thrilled to be working on her first production with The Athena Cats, having just completed *Richard II* with Chase What Flies. She would like to thank Racquel Lehrman at Theatre Planners for the opportunity. Karen has been an Assistant Stage Manager at Will Geer's Theatricum Botanicum since 2014, and worked on *August Osage County* (Ovation nominee 2015) *As You Like It*, *Romeo and Juliet*, *Other Desert Cities*, *A Midsummer Night's Dream* and *The Merchant of Venice*, amongst others. She has also stage managed two Seedlings productions and their Intern showcases

in 2015/2016. Previously she was the Director of Operations for Tahoe Players whose shows include *Annie*, *101 Dalmatians*, *Les Misérables*, *Willie Wonka*, and *Shrek the Musical*. Karen hails from the outskirts of London, England and has a Bachelor of Science Honors Degree in Psychology from Brunel University.

.... **ADDITIONAL CREW** ....

Board Operator.....Estey DeMerchant  
Dresser.....Patrice Johnson  
Dialect Coach.....Abigail Marks  
Assistant Stage Manager.....Monazia Smith



...Kick back...

...Relax...

...Enjoy the ride!





For thousands of years, playwrights have created searing work that deeply affects us. The Athena Cats see theatre as a necessary art, vital to the cultural health of the community. The community of actors and other theatre artists living in Los Angeles is extraordinary. We couldn't do this without them, and our generous donors, volunteers, and supporters. Thank you.

**DONORS**

**Gold and Diamond Circle (\$500 +)**

Anonymous  
Anonymous  
John Wetzork

**Ruby Circle (\$250 to \$499)**

Regi Davis  
Catherine Henry

**Sapphire Circle (\$100 to \$249)**

Sal Medina  
Kenneth Shamordola

**Emerald Circle (\$50 to \$99)**

Autumn McAlpin

**SPECIAL THANKS**

*(alphabetical order)*

Lyse Beck  
Alan Blumenfeld  
Lena Bouton  
Juanita Summers Brown  
Olivia Buntaine  
Sarah Dzida  
Mary Lou Githens  
Katherine Griffith  
Katherine James  
Matt Kamimura  
Leo Knudson

Karina Line  
Autumn McAlpin  
Aimee Pitta  
Joan Raff  
Donovan Reiner  
Katie Rogers  
Taylor Jackson Ross  
Robert Seeley  
Stuart Siegel  
Elena Song  
Brian Stanton

Caron Tate  
Sharon Ulanoff  
Michael Uribes  
Jennie Webb  
Frank Weidner  
Erica Lamkin Wiesen  
Jeff Wiesen  
John Wetzork  
Laurel Wetzork  
Kevin Young

The playwright would especially like to thank all the Conservatives and Liberals she talked to for their different points of view, and all her Vegan and Meat-eating friends.

The statistics for female playwrights are grim. According to studies, only 22% of plays produced Nationwide during the 2011-2014 season were written by women. In the Los Angeles area, the statistic for these dates is 23% (Dramatists Guild: *The Count*; and www.lafpi.com). Please consider joining our growing group of supporters who believe in equal representation for female playwrights and who believe that female voices in the arts are vital for an engaged civic community.



*The Athena Cats is a sponsored project of Fractured Atlas, a non-profit arts service organization. Charitable donations may be made at [www.theathenacats.org](http://www.theathenacats.org).*

*Thanks also to The Will Geer Theatricum Botanicum and its Seedlings Program, Theatre Planners, Independent Studio Services, The Zephyr Theatre, The*



*Odyssey Theatre, the Los Angeles Female Playwrights Initiative (LA FPI), and the Dramatists Guild of America.*

