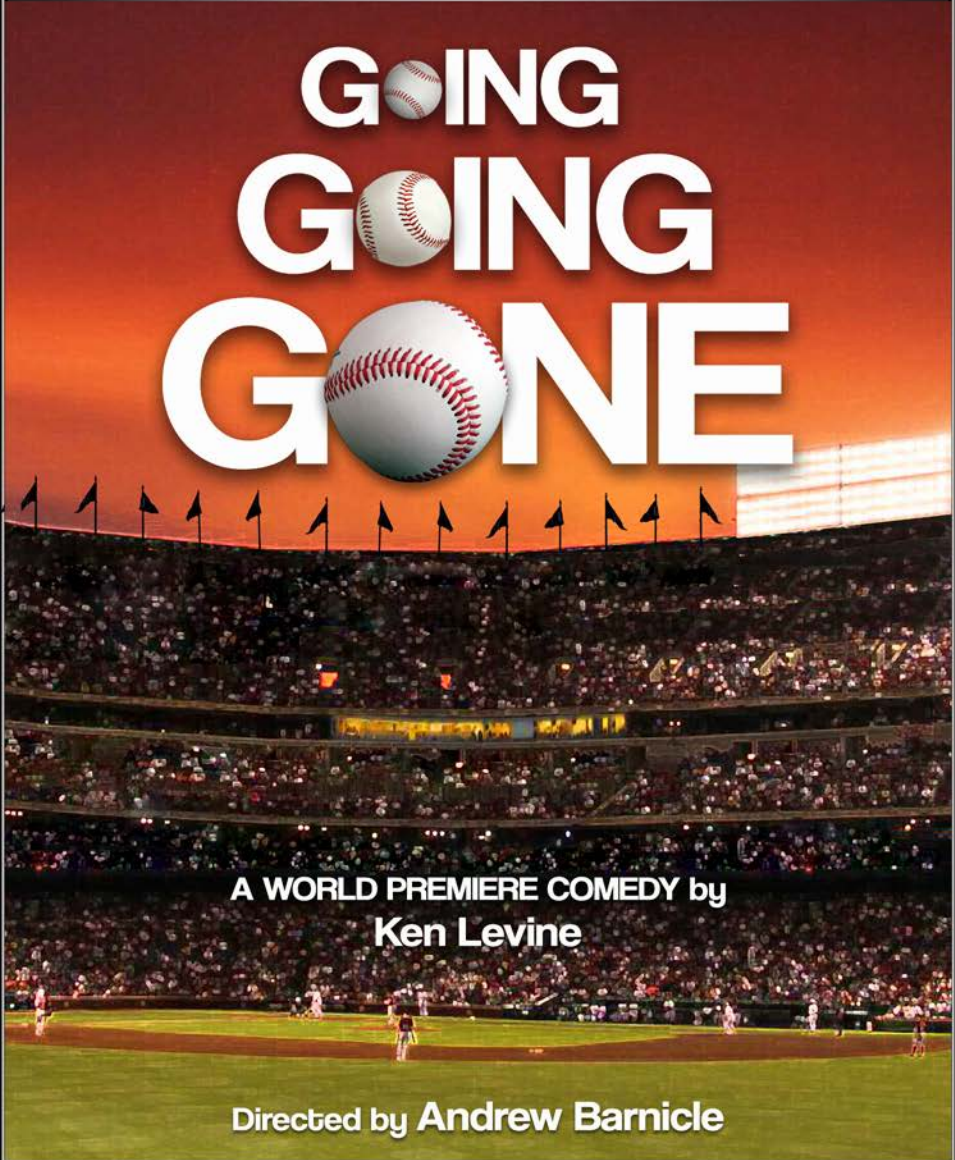


STAGEBILL

HUDSON THEATRES

GOING GOING GONE



A WORLD PREMIERE COMEDY by
Ken Levine

Directed by Andrew Barnicle

HOLLYWOOD THEATRE ROW

QUACK QUACK Productions presents the World Premiere Production of

GOING GOING GONE

Written by Ken Levine
Directed by Andrew Barnicle⁺

Starring

Annie Abrams*, David Babich*, Troy Metcalf*, Dennis Pearson

Producer
Racquel Lehrman,
Theatre Planners

Associate Producer
Victoria Watson,
Theatre Planners

Set Designer
Gary Lee Reed

Lighting Designer
Derrick McDaniel

Costume Designer
Mylette Nora

Sound Designer
Cricket S. Myers

Graphic Designer
Kiff Scholl, AFK Design

Props Designer
Bonnie Bailey-Reed

Press Photographer
Ed Krieger

Publicist
Lucy Pollak

Casting Director
Michael Donovan

Casting Associate
Richard Ferris

Stage Manager
Emyli Gudmundson

Setting
A summer night. The present.

CAST

(in order of appearance)

David Babich*Dennis Minishian
Dennis Pearson.....Mason Young
Troy Metcalf*Big Jim Tabler
Annie Abrams*Shana Sanders

And featuring the vocal talents of

Harry S. Murphy.....Randy
Howard Hoffman.....Announcer
Darlene Koldenhoven.....National Anthem singer

A Note from the Playwright

I wrote this play backwards. Usually, I come up with an idea for a relationship or situation and the theme emerges. This time I had the theme first: “*Our need to be remembered.*” (Call it my mid-AARP crisis.) So I needed a setting that best resonated with that theme. My answer: baseball. Baseball is the one sport in which the present is intricately linked with its past. (Sure I could have gone with the NSA, but baseball seemed more fun.)

Once I locked in on the National Pastime as the canvass, the rest was easy. As luck would have it, I’ve spent twenty-five years in major league baseball as a broadcaster and journalist, so I kinda know the world. I decided to focus the play on the reporters who cover it. After all, they’re the ones who keep track of all those heroic (and not so heroic) deeds. And they’re funny (which is real helpful in a comedy). Many nights, listening to these guys wax poetic and power down two dozen hotdogs was way more entertaining than the game on the field. The reporters’ section of any big league pressbox is a combination of a RAND Institute think tank and a bunch of idiots at a bar. So who better to tackle the existential questions of mortality, legacy, and life than these guardians of the game with cholesterol levels well over three hundred?

I hope you enjoy my “backwards play.” Thanks for coming and “pull up a chair.”

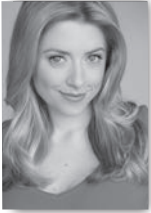
I would also like to give special thanks to Howard Hoffman, Harry S. Murphy, Darlene Koldenhoven, Eric Sterling, David Isaacs, Tom Straw, Treva Silverman, Wendy Graf, the EST Playwrights Unit, and my wonderful family (special recognition to wife Deborah).

Finally, this play is dedicated to Vin Scully. My love of baseball, storytelling, and drama all stem from listening to Vin Scully. He’s retiring this season after sixty-seven years of being an integral part of Los Angeles and our lives. I hope he’s remembered forever.

–Ken Levine
Los Angeles, September 12, 2016

CAST

(in alphabetical order)



ANNIE ABRAMS* (Shana Sanders)

Recent theatre credits include: Miss Mackintosh in *The Sunshine Boys* opposite Danny DeVito and Judd Hirsch (Center Theatre Group/Ahmanson), Vanda in *Venus in Fur* (Ensemble Theatre Company), Brooke in *Noises Off* (LA Mirada Theatre), Ursula in *Tickled Pink* with Rita Rudner (Laguna Playhouse), Philia in *A Funny Thing Happened on the Way to the Forum* (Reprise Theatre Company), Clea in *The Scene* (Ensemble Theatre Company), Sybil in *Private Lives* (GJC Burbank), and Myrrhine in the premiere of Amy Freed's *Lysistrata* (Stanford Summer Theater.) TV credits include: "Major Crimes," "Weird Loners," "How I Met Your Mother," and "True Blood." Annie does stand-up and has performed at The Hollywood Improv, The Comedy Store, and Flappers Comedy Club. She also recently participated in the Burbank Comedy Festival. Annie is an LA native and received a B.A. in Drama from Stanford University.



DAVID BABICH* (Dennis Minishian)

David Babich has worked as an actor in Los Angeles and San Francisco since 1997. David appeared this season as Jackson Avery's divorce attorney on "Grey's Anatomy". Other TV credits include "General Hospital", "Criminal Minds" and "Pee Wee Herman's Christmas Special". Film: "IPO", "Patch Adams", "Want", "Midnight Kings", "Stew" and "The H-Tour" which Babich also directed. LA Theatre: *Reunion, the Musical* (Elliot) - Noho Arts Center, *Dreamland* (Ray/The Latino) - Noho Arts Center, *Monkey Mind* (Frank) - Academy for New Musical Theater, *Quarantine* (Patrick) - The Skylight Theater, *Caucasian Chalk Circle* (Lavrenti) - Spotlight the Arts. Selected Bay Area Theater: *Book of Days* (Sheriff Atkins) - TheatreWorks, *Romeo and Juliet* (Benvolio) - San Francisco Shakespeare Co, *Buddy* (Jerry Alison) - San Jose Stage Company, *Lend Me a Tenor* (Max) - Hayward Little Theatre, Neil Simon's *Rumors* (Ken) - California Conservatory Theater. Education: B.A. in Music UCLA, Certificate in Acting Bennett Theater Lab. David just won a 2015-2016 Scenic Award for his lead performance in *Reunion*.



TROY METCALF* (Big Jim Tabler)

Credits include "AntiDiary" opposite Rihanna, recurring on "Strangers with Candy" (Comedy Central), "Ed" (NBC), "Welcome to Eltingville" (Cartoon Network), "Hot In Cleveland" (TV Land), "Dexter" (Showtime), "Rita Rocks" (Lifetime), "The Defenders" (CBS) and many more. Currently, Troy plays Jim on "The Middle" (ABC) now in it's 8th Season. Film Credits include "Shrink", "Spiderman 2", "For Love of the Film" "Everyone's Depressed" and more. Theatre Credits include NYC Off-Broadway - *Dreams of Salt* (Cherry Lane Theatre), *Wall of Water* (West End Theatre), *Free to be You and Me* (Drama Dept.), *Awesome 80's Prom* (Co Creator and Original Cast) and many more. LA Theatre Credits - *Dead Pilots Society* (Whitefire Theatre), *Impending Rupture of the Belly* (Carrie Hamilton Theatre @ Pasadena Playhouse), *No Good Deed* (Ford Theatre) and more. Troy holds a BFA from Missouri State University and is a Graduate of New Actors Workshop where he trained under George Morrison, Mike Nichols and Paul Sills.



DENNIS PEARSON (Mason Young)

Dennis is excited to be making his debut on the Hudson Guild Theatre stage. A graduate from South Coast Repertory's Professional Acting Intensive, Dennis has studied with Academy Award Winner Tim Robbins & The Actors Gang and has received scholarships to study at A.C.T. and Stella Adler in New York. Some stage credits include *A Christmas Carol* at SCR, Captain Richard Davenport in *A Soldier's Play*, Brutus in *Julius Caesar*, *A Long Bridge Over Deep Waters*, *Almost, Maine*, *The Coarse Acting Show* at Shakespeare Center L.A., Mercutio in *Romeo and Juliet*, *Dream Girls*, *Look Away* at the Long Beach Playhouse, and Euripides *Medea*, for which he received an Irene Ryan Award Nomination. He is also the Creator, Artistic Director and writer of the sketch comedy show *DAYCATION THEATRE* and currently teaches Acting to youth performers in his hometown of Long Beach, CA. Follow Dennis on Twitter @Dennis_Pearson or www.facebook.com/actordennispearson

PRODUCTION TEAM

KEN LEVINE (Writer)

Ken Levine is an Emmy winning writer/director/producer/major league baseball announcer. In a career that has spanned over 30 years, Ken has been the head writer of *M*A*S*H**, producer of *Cheers*, creative consultant of *Frasier* and *Wings*, and has co-created three of his own series including *Almost Perfect* that starred Nancy Travis for CBS from 1995-1996. In addition to the Emmy, he's won two Writers Guild Awards and has had Peabody and Humanitas recognition. As a sportscaster, Ken hosted *Dodger Talk* on the Los Angeles Dodgers Radio Network for eight years. For the last 20 years, Ken has done radio/TV play-by-play for the Baltimore Orioles, Seattle Mariners and San Diego Padres and has contributed pieces for ESPN and Fox Sports. He was voted the Virginia Sportscaster of the Year in 1989 (when he broadcast for the Tidewater Tides minor league team), and twice was named "Best Sports Talk Host" by the Southern California Sportscasters Association for his work on *Dodger Talk*. Ken's other plays include *Upfronts & Personal* and *A or B?* His musical, *The '60s Project*, which he co-wrote with Janet Brenner, was directed by Tony-winner Richard Maltby Jr. and starred Andrew Rannells at the Goodspeed Theatre in Connecticut. Ken also writes a popular daily blog, "By Ken Levine," which was named one of the ten best television blogs in America by *Entertainment Weekly* and one of the 25 best blogs in the world by *TIME* magazine. He contributes essays to the *Huffington Post* and has written articles for the *Los Angeles Times*, *London Times*, *Toronto Star*, *Hollywood Reporter*, *Variety* and *ESPN.com*.

ANDREW BARNICLE (Director)

Andrew Barnicle directed the world premiere of Ken Levine's *A Or B?* at the Falcon Theatre. For 20 years, from 1991 through 2010, Andy served as Artistic Director of the Laguna Playhouse. During that time he produced over 100 Playhouse shows and directed over 40, including many world, U.S., West Coast and Southern California premieres. Recent directing projects at Laguna include Lissa Levin's *Sex and Education* (starring Julia Duffy), Neil Simon's *Chapter Two* and *The Odd Couple* (starring Maxwell Caulfield), Willy Russell's *Shirley Valentine* and Noel Coward's *Private Lives*, which also played at Ventura's Rubicon Theatre. In the past few years, Andrew directed *Venus in Fur* and Noel Coward's *Fallen Angels* at the Ensemble Theatre Company of Santa Barbara; *The Irish Curse* at the Odyssey Theatre; and *Gunmetal Blues* at North Coast Rep in Solana Beach, where he has directed 11 plays. Andrew previously served as Head of Theatre at United States International University's School of Performing and Visual Arts in San Diego. He has also directed at San Diego's Theatre at Old Town; Michigan's Meadow Brook Theatre; six plays at Burbank's Colony Theatre including the recent *Blame It On Beckett* and *Sex and Education* (starring Stephanie Zimbalist); and *The Foreigner* at the San Jose Repertory Theatre.

RACQUEL LEHRMAN, THEATRE PLANNERS (Producer)

Racquel is the founder and managing director of Theatre Planners, her own theatre production firm which has been serving the Los Angeles theatre scene for almost ten years. She graduated from NYU-Tisch School of the Arts and lived in NY for many years producing theatre. Theatre Planners has since developed into a very busy and successful outlet for actors, writers, producers and theatre companies. Doing everything from producing, consulting, marketing and more. Racquel loves to make productions a reality and help to keep the theatre scene in LA alive and strong. Racquel is also the owner of the LOUNGE THEATRES in Hollywood on Theatre Row. To learn more about Racquel and Theatre Planners, go to www.theatreplanners.com

VICTORIA WATSON, THEATRE PLANNERS (Associate Producer)

Victoria joined Theatre Planners after a successful career in large theater and tours. She was previously Operations Manager and Associate Producer at Pasadena Playhouse and has worked with the Los Angeles Philharmonic and Pasadena Symphony & Pops among others. A performer from an early age, Victoria turned to production at Tulane University, and brings that merger of artist and business to all of her producing work. To learn more about Victoria and Theatre Planners, please go to www.theatreplanners.com.

GARY LEE REED (Set Designer)

When not acting Gary directs. When not directing he designs. Sometimes he is blessed to do both. The last show he designed was *The Andersonville Trial* at GJC in Burbank which he also directed. Two things Gary is most thankful for are his relationship with Raquel and Victoria at Theatre Planners and the great experience and collaboration with his wife Bonnie who is the prop mistress... when she is not acting.

DERRICK MCDANIEL (Lighting Designer)

From *Romeo and Juliet* to *Guys and Dolls*, Derrick has designed lighting for many plays over his 20-plus years in the business. A few of Derrick's lighting credits include, *Luigi* at the VS Theatre, *Dinner At Home Between Deaths* at the Odyssey Theater, *Melissa Arctic* at the Road Theater on Magnolia. Derrick won the LA Weekly 2012 award for lighting *Mercy Seat* at the Inside the Ford Theater. He has also been nominated for a 2008 Ovation Award for lighting, for *The Shelter* at the Odyssey Theater and for *Lady* at the Road Theater. He has also been nominated for a 2008 Los Angeles Drama Critics Circle award *On An Average Day* at the Elephant Lab. This year, he was featured in the Artist Profile section of @ThisStageMagazine. Derrick would like to thank Theater Planners for another opportunity to create. And thanks to the patrons of live theater. Enjoy!

MYLETTE NORA (Costume Designer)

Mylette Nora has won the NAACP Theatre Award for best costumes and is listed in the honors edition of the Cambridge Registry of Who's Who Among Executive and Professional Women. Her work, which consists of television, film, and stage, can be seen nightly on "The Tonight Show" with Jay Leno. The famed artist Synthia St. James noted Mylette as being the inspiration for her world renowned painting "Ensemble" which graced the cover of the best selling novel "Waiting To Exhale" by Terry McMillan. Mylette's talents continue with her creative line of heirloom dolls called "My Mind's Eye" and a line of designer doggie wear called "From the Heart Doggie Wear."
www.FROMTHEHEARTDOGGIEWEAR.com

CRICKET S. MYERS (Sound Designer)

On Broadway, Cricket earned a Tony Nomination and a Drama Desk Award for her design of *Bengal Tiger at the Baghdad Zoo*. Off Broadway designs include *The Marvelous Wonderettes*. She has also designed regionally at The Geffen Playhouse, La Jolla Playhouse, The Ahmanson, The Mark Taper Forum, Berkeley Rep, Arena Stage, South Coast Rep, The Kirk Douglas Theater, and the Pasadena Playhouse. Other selected L.A. designs include NoHo Arts Center, Ghost Road Theater Company, The Celebration Theater, Antaeus Theater Company and Circle X. She has earned 18 Ovation Nominations, as well as winning The Kinetic Award for Outstanding Achievements in Theatrical Design, an LADCC and a Garland Award. www.cricketsmyers.com

BONNIE BAILEY REED (Props Designer)

Bonnie's most recent Prop Mistress job was for the critically acclaimed play, *Please Don't Ask About Becket*, at The Black Box Theatre at Sacred Fools. Other plays include: *Blueprint For Paradise* - Main Stage The Hudson Theatre, Hollywood, CA; *Weapons* - The Lounge Theatre, Hollywood, CA; and *The Andersonville Trial* - at The Grove Center Theatre, Burbank, CA. Bonnie's avocation of Property Mistress has included productions of: *Driving Miss Daisy* - Innovation Theatre in Bend, OR; *Inherit The Wind* - THE GROVE CENTER THEATRE, Burbank, CA; *Long Day's Journey Into Night* - Actors Co-op, Hollywood, CA; *The Dying Gaul* - The Elephant Space, Hollywood, CA.

MICHAEL DONOVAN (Casting Director)

Michael is the recipient of six Artios awards, given by the Casting Society of America for Outstanding Achievement in Casting. His theatre credits include shows produced at Pasadena Playhouse, the Hollywood Bowl, Walt Disney Concert Hall, the Geffen Playhouse, the Kirk Douglas Theatre, La Jolla Playhouse, International City Theatre, Ebony Repertory Theatre, the Getty Villa, Laguna Playhouse, the Falcon Theatre, the Colony Theatre, The Theatre @ Boston Court, the 24th St. Theatre, Ensemble Theatre of Santa Barbara, Arizona Theatre Company, Arkansas Rep, the Totem Pole Playhouse, and the Kentucky Shakespeare Festival, as well as several national tours. Recent, current and upcoming shows include *A Chorus Line* (Hollywood Bowl), *Recorded In Hollywood* (Kirk Douglas), *Haunted House Party* (Getty Villa), *Drama Queens From Hell* (Odyssey Theatre), *Bars & Measures* (Boston Court), and *Frozen* (Disneyland). Michael has cast numerous independent films, over 1,200 commercials, and his TV credits include the series *Blood Relatives*.

EMYLI GUDMUNDSON (Stage Manager)

Emyli Gudmundson is a producer and stage manager from Minnesota who has worked across the country, abroad, and at numerous theatre companies throughout LA including *Skylight* (*Jim's thesis*, *The End Times*, *Church & State*, *Obama-ology*), *The Echo* (*Bed*, *American Falls*), and *The Blank* (*A Singular They*). She is also proud to currently work both as a stage manager and as the Marketing & Development Assistant for the Antaeus Theater Company. When not in the theater, she is usually writing about feminism on the internet, baking cupcakes, or petting other people's dogs.

SPECIAL THANKS

**The Hudson Theatre • The Zephyr Theatre
The Lounge Theatre**

Production Services & Ticket Agency 4 Plays



Welcome to Plays411.
The House is Open!

Ticket Agency

24 hours a day / 7 days a week

Production Services

GRAPHICS & PRINTING

- Poster & Postcards
- Programs
- Billboards
- Tickets

MARKETING

- Targeted mailings
- E-mail marketing
- Industry fax marketing
- 1/2 price tix

INSURANCE

- General Liability
- Workers Comp
- Volunteer

PUBLICITY

- Listing
- Invite reviewers

LEGAL SERVICES

Do it right :)

WEB SITES

For plays, companies, theatres, and actors.

ACCOUNTING

Bookkeeping & accounting for the 99-seat play.

PROMOTIONAL PACKETS

Sell yourself or your show—after you're a hit!

CASTING

Professional casting services.

YELLOW PAGES

Complete directory of services and staffing.

FORMS

Download your Equity registration form and 99-seat plan for free!

323.965.9996

fax 323.965.9997 info@plays411.com www.plays411.com

The Best Services for the Lowest Prices

WELCOME TO THE HUDSON THEATRES

Thank you for supporting live theatre in Los Angeles. We have three theatres here at the Hudson and it's likely that there are other performances taking place simultaneously. Therefore, if there are lights flashing in the hallway at any time, that indicates that there are indeed other shows in progress and care must be taken with noise interruption. Please remember to be considerate of the other shows and remain quiet in the hallways when the red lights are flashing. Additionally, there is no food or drink, other than bottled flat water, permitted in the theatres. We're glad you're here and hope you enjoy your evening. For more information about the Hudson Theatres, or for upcoming show schedules, please visit our website at www.hudsontheatre.com.

• Elizabeth Reilly - Hudson Founder / Artistic Director