

THE FOUNTAIN Theatre  
INTIMATE. EXCELLENT.

THE FOUNTAIN THEATRE PRESENTS A WEST COAST PREMIERE

**J. ALPHONSE NICHOLSON**

# FREIGHT

BY **HOWARD L. CRAFT**

THE FIVE  
INCARNATIONS  
OF **ABEL GREEN**

West Coast Premiere



Now in its 33rd year, The Fountain Theatre is one of the most highly regarded theatres in Los Angeles. Founded in 1990 by Co-Artistic Directors Deborah Lawlor Culver and Stephen Sachs, the Fountain is dedicated to creating, developing, and producing plays that dramatize urgent issues and matters of the heart, reflecting the diversity of Los Angeles and the nation.

Leading the way out of the pandemic with the installation of its Outdoor Stage in 2021, the Fountain produces full seasons of plays on two stages year-round. Fountain Theatre productions have won hundreds of awards for all areas of production, performance, and design. The Fountain is the recipient of the Los Angeles Drama Critics Circle's Margaret Harford Award for sustained excellence in theater, presented for "outstanding productions of meaningful new plays and first-class performances spanning three decades." Los Angeles Times theater critic Charles McNulty called the Fountain "L.A.'s most enterprising intimate theater [that] continues to punch far above its weight... No L.A. theater has done a better job of asking us to reexamine our lives through the lens of acute contemporary drama this year than the Fountain." The L.A. City Council honored the Fountain for "achieving a position of leadership in the Los Angeles theater community... producing meaningful new plays of social and political importance that enrich the lives of the citizens of Los Angeles."

Fountain projects have been seen in regional theaters around the country, Off-Broadway, on the West End, and around the world. Fountain plays have been made into movies, radio dramas, podcasts, and have been the subject of documentary films. Two recent Pulitzer Prize winners (Martyna Majok's *Cost of Living* and *Between Riverside and Crazy* by Stephen Adly Guirgis) were premiered in Los Angeles at the Fountain.

The Fountain was instrumental in the founding of Deaf West Theatre in 1991. It became the Los Angeles artistic home of internationally renowned playwright Athol Fugard, introduced L.A. to the work of Tarell Alvin McCraney, and debuted the world premiere of a new play by Tony-winner Robert Schenkkan about U.S. immigration policy. Last season, once again giving voice to the urgency of the moment, the Fountain mounted a hyper-staged reading of Lisa Loomer's *Roe* in response to the Supreme Court ruling overturning *Roe v Wade*.

Two groundbreaking arts education programs launched by the Fountain serve students and young people throughout Los Angeles. *Fountain Voices* brings theatre professionals into high school classrooms, and *Walking the Beat* joins inner-city youth with police officers to create a theatre piece that they perform together.

## **The Fountain Theatre**

**Stephen Sachs** *Artistic Director, Co-Founder*

**Simon Levy** *Producing Director* · **James Bennett** *Producer*

**Scott Tuomey** *Technical Director* · **Barbara Goodhill** *Director of Development*

**Lucy Pollak** *Public Relations* · **Nathan James** *Arts Education Manager*

**Peter Carrisoza** *Accountant* **Terri Roberts** *Café/Costume Maintenance*

**Gina De Luca** *House Manager* · **Liz Aguilar** *Box Office* · **Jose Lomeli** *Parking Attendant*

## **Fountain Theatre Board of Directors**

Miles Benickes · Anne Brener · Diana Buckhantz · Carrie Chassin · Lois Fishman · Erin Kaplan  
Karen Kondazian · Dick Motika · Theo Perkins · Margaret Phillips · David L. Volk · Dorothy Wolpert  
Donald Zachary · Jason Zelin



Presents

**J. ALPHONSE NICHOLSON**

in

# **FREIGHT**

THE FIVE INCARNATIONS OF ABEL GREEN

Written by **Howard L. Craft**

with

**Sidney Edwards**

Scenic Design

**Joel Daavid**

Lighting Design

**Alison Brummer**

Video Design

**Eamonn Farrell**

Costume Design

**Danyele Thomas**

Props Design

**Rebecca Carr**

Sound Design

**Marc Antonio Pritchett**

Graphic Design

**Loyd Visuals**

Production Stage Manager

**Kaitlyn Cramer**

Technical Director

**Scott Tuomey**

Produced by

**Stephen Sachs Simon Levy James Bennett**

Executive Producer

**J. Alphonse Nicholson**

Directed by

**Joseph Megel**

West Coast Premiere

*Freight: The Five Incarnations of Abel Green* was first produced at StreetSigns Center for Literature and Performance in North Carolina. It premiered Off-Broadway at Woodie King Jr.'s New Federal Theatre, in association with Castillo Theatre.

---

## CAST

---

Abel Green  
The Universal Flow

**J. Alphonse Nicholson\***  
**Sidney Edwards\***

*\*Member of Actors' Equity Association,  
the union of professional actors and stage managers in the United States.*

**Time:** 1910s-2010s.

**Place:** Rural and urban America.

**Incarnation 1:** The Minstrel – early 1910s.

**Incarnation 2:** The Instrument of God – mid 1930s.

**Incarnation 3:** The Snitch – late 1960s.

**Incarnation 4:** The Last Great Black Actor – 1980s.

**Incarnation 5:** The Saturn-Bound Man – 2010s.

*Freight is approximately 90 minutes.  
It is performed with no intermission.*

---

## WHO'S WHO

---



**J. ALPHONSE NICHOLSON** (Abel Green) is an American-born actor/percussionist. Notable TV/Film credits include: series regular on *P-Valley* (STARZ), *Just Mercy* (Warner Bros. Pictures), *Self-Made: Inspired by the Life of Madam C.J. Walker* (Netflix), *Blue Bloods* (CBS), *Mr. Robot* (USA), *Shots Fired* (FOX), *Marvel's Luke Cage* (Netflix), *Tales* (BET), *The Blacklist* (NBC), and *Chicago PD* (NBC).

Notable Theater credits include: Tony Award for Best Revival for *A Soldier's Play* on Broadway (Roundabout), Signature Theatre's off-Broadway production *Paradise Blue*, *FREIGHT* (NFT), and *Days of Rage* (Second Stage Theater). Next up for J. Alphonse are *The Sterling Affairs* (FX), *Black Spartans* (Buffalo 8 Productions), and *Albany Road*. Recently seen in the remake of *White Men Can't Jump* (Disney/20th Century Studios) and *They Cloned Tyrone* (Macro/Netflix). Love to my boy, my girl, and my Nafeesha.



**SIDNEY EDWARDS** (The Universal Flow) is an AEA actress, singer, dancer, and director currently based in Los Angeles, California. She has a BFA in Musical Theater from William Peace University and an MFA in Theatre Arts from the University of Louisville. She received the Distinguished Actor award at KCACTF for her performance in *Miss Ida B. Wells*, performed at the National Black Theatre Festival in Kirsten Greenidge's *Baltimore*, and toured with Missoula Children's Theater. Favorite credits include Amneris in *Aida* (Karamu House Theatre), Sally Bowles in *Cabaret* (Leggett Theatre) and Squeak in *The Color Purple* (Justice Theatre Project). Sidney was a teaching artist at The Cleveland Playhouse and now does similar work at Geffen Playhouse. She has served as theater faculty at Baldwin Wallace University, and The University of Louisville, where she was the Director of the African American Theater Program. Sidney would like to thank God (for EVERYTHING), her family, and Byron for their continued support. "I am because you are!" [www.sidneyedwards.com](http://www.sidneyedwards.com).



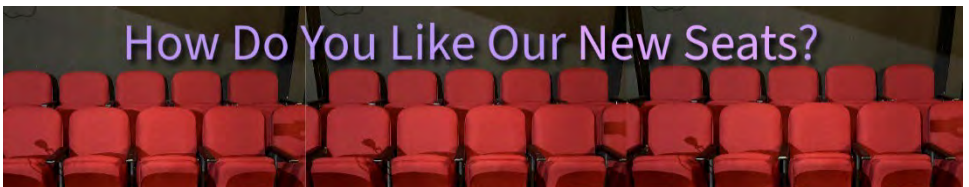
**HOWARD L. CRAFT** (Playwright) is a father, husband, playwright, poet, essayist, and arts educator. He is the author of more than ten plays including *Freight: The Five Incarnations of Abel Green*, which was chosen as a New York Times Critic's Pick during its' March 2015 Off-Broadway run; *The House of George*, *Stealing Clouds*, *Caleb Calypso* and *the Midnight Marauders*, *Orange Light*, *Fire of Freedom*, *No Fear* and *Blues Long Gone: Nina Simone*, *The Christmas Case Of Hezekiah*

*Jones*, *Indigo Blue*, and *The Jade City Chronicles Volume 1: The Super Spectacular Badass Herald M. F. Jones*. Following the successful stage production of *The Jade City Chronicles Volume 1*, Craft and former WUNC "The State of Things" host Frank Stasio created the first African American Superhero Radio Serial entitled *The Jade City Pharaoh*, which aired for three seasons. Craft is a recipient of a North Carolina Arts Council Playwriting Fellowship, a two-time winner of the NCCU New Play Project, and the Ann Atwater Award for Theatre. He is the author of two books of poems, *Across the Blue Chasm* (Big Drum Press 2000) and *Raising the Sky* (Jacar Press 2016). His poetry also appears in *Home is Where: An Anthology of African American Poets from the Carolinas*, edited by Kwame Dawes. His essays have appeared in *The Paris Review*, Sam Stephenson's *Bull City Summer: A Season at The Ballpark*, Thomas Sayre's *White Gold*, and *The Routledge Companion to African American Theatre* (Routledge Press 2019). Craft is currently the Piller Professor of the Practice at The University of North Carolina at Chapel Hill. He lives in Durham, "THE BULL CITY," with his wife, son, and beagle, Shazam.



**JOSEPH MEGEL** (Director) Off-Broadway and New York: Howard L. Craft's *Freight: The Five Incarnations of Abel Green* (New York Times Critic's Pick), Guillermo Reyes's *Men on the Verge of a Hispanic Breakdown* (Outer Critics Circle Award), Dean Gray's *The Pattern at Pendarvis*, Jim Grimsley's *The Lizard of Tarsus*, *The Working Project* for The Working Theater. Regional: Howard Craft's *Orange Light* (Bulldog Ensemble Theater), Kane Smego's *Temples of Lung and Air*

(Detroit Public Theatre), Jennifer Maisel's *The Last Seder* (EST West, Theatre J, The Organic Theatre); Elisabeth Lewis Corley's adaptation of *The Miser* (Duke University); Derek Goldman's adaptation of *Will the Circle be Unbroken* (Chapel Hill); *A Public Reading of an Unproduced Screenplay About the Death of Walt Disney*, *Best of Enemies*, *The Brothers Size*, *The Goat*, and *Nixon's Nixon* (Man Bites Dog Theater). Joseph Megel is an artist in residence in Performance Studies at the University of North Carolina at Chapel Hill's Department of Communication, where he runs the Process Series: New Works in Development. He is the Artistic Director of StreetSigns and Co-Executive Director of Harland's Creek Productions, a producer of new plays, screenplays, and short films. Recent direction for StreetSigns includes *Cascade*, *Temples of Lung and Air*, *The Talk*, *Closer Than They Appear*, *Freight: The Five Incarnations of Abel Green*, *Trojan Barbie*, *Blood Knot*, *Poetic Portraits of a Revolution*, *Dream Boy*, and *White People*.



---

## PRODUCTION TEAM

---

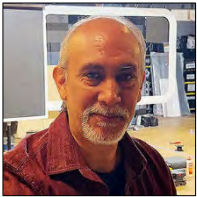
**ALISON BRUMMER** (Lighting Design) Previous work with the Fountain Theatre includes *Lifespan of a Fact*, *ROE*, the Walking The Beat productions of *Flicker* and *C.H.I.N. Up!*, and *CITIZEN* produced with Grand Performances at INNER-CITY ARTS. Alison is currently a Theater Planner with the architecture firm DLR Group.



**REBECCA CARR** (Props Design) is a prop and costume designer for theatre, television, and film. Theatre: *Last Summer at Bluefish Cove* (The Fountain), *See You at the Funeral* (LAX Fest), *Blood/Sugar* (Plainwood Productions); *I Decided I'm Fine*, *The Last Croissant*, *What Happened to Where I've Been*, *Dead Dog's Bone* (Attic Collective). Design for Film: *Tread*. IATSE Local 705 Costumer: *The Afterparty*, *Loot*, *Rutherford Falls*, *The Valet*, *Our Flag Means Death*, *King Richard*, *9-1-1*, *The Prom*, *Ratched*, *American Crime Story: Versace*, *The Politician*, *American Horror Story 6, 8, & 9*. BFA in Costume Design from Emerson College.



**KAITLYN CRAMER** (Production Stage Manager) is thrilled to be joining the Fountain Theatre team for the west coast premiere of *Freight*. Before recently returning to Los Angeles, Kaitlyn spent the last year and a half bouncing across the country as the Tour Stage Manager for Netflix's immersive theatrical production of *Stranger Things: The Experience*. Other previous credits include *Arcane: Enter the Undercity*, stage management at AMDA Conservatory, and serving as Resident Stage Manager at The Great American Melodrama on the Central Coast.



**JOEL DAAVID** (Scenic Design) Texan/LA resident since 1993. Joel has become an award-winning director/set designer since attending the American Film Institute for Cinematography. His career accomplishments also include cinematography for film and video projects. Joel's most notable awards include the Ovation, LA Weekly, NAACP and LADCC Theater Awards. He directed/designed the award-winning production of *The Miracle Worker* at the Matrix and Edgemar Theatres and the new production of Tennessee Williams' *Baby Doll* at the Lillian Theatre. Joel directed/designed the multi-award-winning *Frankenstein* for Theatre Tallahassee, the epic story of *Camille* (Claudel) at the Greenway Arts Alliance, and most recently the world premiere musical *Caligari's Cabinet of Curiosities* written by Vanessa Stewart. [www.joeldaavid-director.com](http://www.joeldaavid-director.com)



We honor the loving spirit of

**SHIRLEY JO FINNEY**

Inspirational Director  
Beloved Member of  
Our Fountain Family





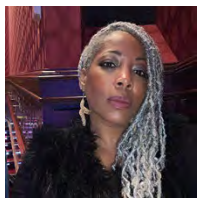
**EAMONN FARRELL** (Video Design) is a New Jersey-based video designer whose work focuses on investigations of how innovative technologies can support and elevate the work of live performers to create unforgettable experiences. Eamonn has collaborated with director Joseph Megel on several productions, and this will be his fourth time designing a presentation of *Freight: The Five Incarnations of Abel Green*. Eamonn is excited to work with the Fountain Theater for the first time. Eamonn has collaborated with and designed video extensively for the late Lee Breuer of Mabou Mines, including: *Pataphysics Pennyeach*, *La Divina Caricatura*, *Opera Antigone*, and *Medea*. Eamonn also frequently collaborates with artist Sarah Michelson in the creation of performances and installations, with Paul Lazar of Big Dance Theater, and with Rosalba Ralón of Pregones/PRTT. Other design credits include National Sawdust, The Flea, HERE, TFANA, Beth Morrison Productions, B3 Dance (Bessie Nomination), Bridge Rep (Irne Nomination), The LA Phil, Redcat, The Zwirner, Parsons Dance, Jazz at Lincoln Center, and Portland Center Stage. Eamonn has taught projection design at Princeton, City College, JMU, and UVA. [www.eamonnsgarden.com](http://www.eamonnsgarden.com)



**KHALEEL LOYD** (Graphic Design) is a forward-thinking entrepreneur, results-driven strategist, and passionate leader. He serves as the CEO and Executive Producer of Loyd Visuals, a family-owned agency specializing in commercials, documentaries, and short films based in Charlotte, NC. As co-founder of the award-winning agency, Khaleel is credited with advancing the marketing initiatives of Fortune 100-500 brands, including Honeywell, Airbnb, and the NFL. As the CEO of an organization founded in family and rooted in community, Khaleel intentionally balances Loyd Visuals' support of global corporations with its support of local non-profit agencies. Khaleel was named top 30 under 30 in 2017 by the Charlotte Mecklenburg Black Chamber of Commerce, received the Excellence in Leadership Award for Entrepreneurship through UNC Charlotte's Black Alumni Chapter in 2019, is a Graduate of the City of Charlotte's Amped Up program, and the Entrepreneur's Organization Accelerator Program. Khaleel strives to change the way business is done and is passionate about creating a new model with a stance on centering people over profit. With a deep desire to see fellow dreamers and visionaries succeed, Khaleel diligently empowers entrepreneurs by sharing his insights on business best practices and the creation of generational wealth— opportunities he believes should be accessible to all.



**MARC ANTONIO PRITCHETT** (Sound Design) is a working actor, director, fight coordinator, and session singer in the Los Angeles area. He is a former Artistic Director at Sacred Fools Theatre Company. Recent sound/music credits include *The Mousetrap* at Theatre Palisades, *The Latrell Show* at IAMA Theatre, *The Play You Want* at the Road Theatre, *Sweat and Cry It Out* at the Chance Theatre, *The Lifespan of a Fact*, *An Octoroon*, *The Children* and *Detained* at the Fountain Theatre. He is represented by Nucleus Talent Management. For additional info, visit [www.marcantoniopritchett.com](http://www.marcantoniopritchett.com)

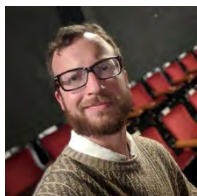


**DANYEAL THOMAS** (Costume Design) Danyeale is thrilled to officially be a part of the Fountain Theatre family. She is an accomplished Los Angeles-based Costume Designer, Assistant Costume Designer, Wardrobe Stylist, and Jewelry Designer with design credits and collaborations with the Pasadena Playhouse, Los Angeles Opera, Kirk Douglas Theatre, Robey Theatre Company, and others.

---

## FOUNTAIN THEATRE STAFF

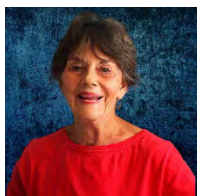
---



**JAMES BENNETT** (Producer) joined the Fountain team in 2009 and has smiled and whistled, much to the irritation of everyone else, every day ever since. James enjoys chatting, hobnobbing, and wine-sipping with all the theatre's many fine friends, family, and patrons. For work, he can be found running the whole stack of theatre activities, whether that's toiling on a pile of paperwork, coiled into a pretzel in the tech booth, or producing fabulous Flamenco shows. He's enjoyed co-producing the Fountain's Rapid Development Series for 4 seasons so far and is looking forward to many more scrumptious seasons to come. If you see him bouncing, skipping, or galloping about it's safe to assume he's having a blast. He's compelled to the theatre by its immediacy, its intimacy – the visceral impact of being so close to real humans with real sweat and real spit. In a world that's increasingly disjointed, behind glass, and far away – theatre has become more powerful than ever.



**PETER CARRISOZA** (Accountant) obtained his business degree from CSU Northridge and has worked as an accountant/financial analyst in a variety of industries ranging from entertainment to defense contracting. He is currently enjoying his third year at the Fountain Theatre.



**DEBORAH LAWLOR CULVER** (Co-Founder) grew up in Riverside, California. Her career began in the '60s as a dancer, choreographer, and actor in New York. She moved to South India in 1968. There, she pioneered Auroville, a utopian international community created for human unity. Returning to the U.S., she and Stephen Sachs co-founded The Fountain Theatre in 1990. Dubbed the "Fountain Theatre's godmother of flamenco" by the L.A. Times, she guided the company's renowned "Forever Flamenco" series. Other dance projects at the Fountain include *The Women of Guernica*, Lawlor's flamenco-based adaptation of Euripides' *The Trojan Women*, which she also directed; *Love Letters of the Great Romantics*; *The Path of Love*, and *The Song of Songs*, with music by Al Carmines. In 2006, she directed the West Coast premiere of *Taxi to Jannah*. In 2017, the Fountain premiered Lawlor's play *Freddy*. In 2010, Actors' Equity Association honored Deborah with its Diversity Award for her dedication to presenting work at the Fountain that is culturally diverse. She received special commendations from the City of Los Angeles and the Spanish Consulate for her contributions to the art of flamenco. Deborah passed away in May 2023. Her legacy lives on at the Fountain Theatre and in the many people whose lives she changed.





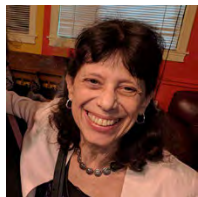
**BARBARA GOODHILL** (Director of Development) has been Director of Development at The Fountain Theatre since 2013. Barbara's wealth of experience, innovative thinking, and dedication have resulted in significant growth in The Fountain's donor community and strengthened relationships with the funding community. A passionate believer in the power of live theatre to open hearts and encourage empathy, Barbara is deeply committed to The Fountain, its vision, mission, and future goals. "Institutions like The Fountain Theatre are vital to the health of a diverse, compassionate society." Barbara loves the opportunity to meet the many wonderful patrons who form The Fountain Theatre's family and is always happy to receive your calls and greet you at the theatre. Barbara received her B.A. from UC Berkeley and her Masters from UCLA.



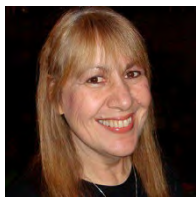
**NATHAN JAMES** (Theatre Education Manager) is a proud native of Pittsburgh, where he began his career with Kuntu Repertory Theater. He received a B.A. from the University of Pittsburgh and an M.F.A from Penn State University, where he also served as an instructor in the Fundamentals of Acting. With over twenty years in arts education, he started out as a teaching artist for the Pittsburgh C.L.O. While living in New York, he taught stage combat for the McCarter Theater at Princeton University, and screenwriting for Urban Arts Partnership and HBO (MAX). Nathan is one of the seven playwrights who contributed to the New Black Festival's 'Hands Up: Seven Playwrights, Seven Testaments,' which was featured in American Theater Magazine and on BBC Radio, with his specific piece chosen as BBC Radio's Play of the Week. Theater Credits: Off-Broadway: *Travisville* (Ensemble Studio Theatre), *Playing with Fire* (Gene Frankel Theatre), *Black Angels Over Tuskegee* (St. Luke's Theatre). NY: *Maid's Door* (Billy Holiday Theatre). Film/TV credits: *Standing Up, Falling Down* (Tilted Windmill Productions), *Madam Secretary* (CBS), *Shades of Blue* (NBC), *Quantico* (ABC), *Blindspot* (NBC), *VINYL* (HBO), *Person of Interest* (CBS), *Blue Bloods* (CBS), *The Path* (Hulu), *Service to Man* (STARZ).



**SIMON LEVY** (Producing Director) has been Producing Director of the Fountain Theatre since 1993. The Los Angeles Drama Critics Circle honored him with the Milton Katselas Award for Lifetime Achievement in Directing. Recent shows he's directed at the Fountain include *The Lifespan of a Fact* (reprised at the Rubicon Theatre in Ventura), *The Children*, *Daniel's Husband*, and *The Chosen*, among the 25 shows he's directed here. His stage adaptation of F. Scott Fitzgerald's *The Great Gatsby* (Finalist for the PEN Literary Award in Drama) is produced widely throughout the world. It is the only stage adaptation authorized by the Fitzgerald Estate, and is published by Dramatists Play Service, along with his adaptations of *Tender is the Night* (winner of the PEN Literary Award in Drama) and *The Last Tycoon*. He has produced dozens of shows at the Fountain over the past 30 years. Prior to coming to Los Angeles, he lived in San Francisco, where he was the General Manager of *Beach Blanket Babylon*, Artistic Director of The One Act Theatre Company, and Executive Director of Theatre Bay Area. He belongs to many theatre, human rights, and political advocacy groups. [www.simonlevy.com](http://www.simonlevy.com).



**LUCY POLLAK** (Publicist) has been providing publicity services to the Los Angeles performing arts community for the past 30 years and is honored to have represented the Fountain Theatre since 2008. Prior to becoming a publicist, Lucy spent ten years as the production manager/staff producer at the Odyssey Theatre, earning an L.A. Drama Critics' Circle Award, an L.A. Weekly Award, 4 Drama-Logue Awards, and a Women in Theatre Recognition Award.



**TERRI ROBERTS\*** (Café Manager/Costume Maintenance) has made the Fountain Theatre her artistic home for nearly 14 years. She wears many hats, including the care of costumes, props, and costumes, and serving Fountain patrons as manager of the charming indoor/outdoor Fountain Theatre café. Terri also works in stage management (production/assistant stage manager on 20 fabulous Fountain shows), and she loves every opportunity to also serve as a casting assistant, props designer/set dresser, and coach for actors. Terri spent over 25 years as a theatre/entertainment writer. Her works have appeared in *Variety*, *Performances*, *Back Stage West*, *Ross Reports*, *The Sondheim Review*, *LA Weekly*, *LA Parent*, *ShowMag.com*, and *TheaterMania.com*. She is currently focused on fiction writing. Deep gratitude, as always, to Stephen and Simon. Member of Actors' Equity Association.



**STEPHEN SACHS** (Artistic Director, Co-Founder, Producer) is an award-winning playwright, director, producer, and the Artistic Director of the Fountain Theatre, which he co-founded in 1990. He is the author of eighteen plays that have been produced across the country, in New York, on the West End, and worldwide. He wrote the screenplay for the film version of his play *Sweet Nothing in my Ear* for CBS starring Marlee Matlin and Jeff Daniels. Sachs was instrumental in the launching of Deaf West Theatre at the Fountain in 1991. He directed the inaugural production of the Outdoor Classical Theater at the Getty Villa in Malibu in 2006 and directed several premieres of new plays by Athol Fugard in Los Angeles, New York, and the UK. Sachs has received every theatre award in Los Angeles. He was recently honored by the Los Angeles City Council for "his visionary contributions to the cultural life of Los Angeles." [www.stephensachs.com](http://www.stephensachs.com)



**SCOTT TUOMEY** (Technical Director) has been Technical Director at the Fountain since its inaugural production of *Winter Crane* in 1990. He has overseen virtually every Fountain production, on and off-site, including their numerous flamenco shows, and has appeared here on our stage in *Declarations: Love Letters of the Great Romantics*, and the Fountain's hit productions of *Master Class* and *Joe Turners' Come and Gone*. Scott's talents as actor-singer-guitarist were also seen in the Shakespeare Festival L.A. productions of *As You Like It* and *Twelfth Night* at the Globe Theatre in West Hollywood and in the film *A Day in the Life of Sunny Paradise*.

**VISIONARIES \$45,000+**

Ahmanson Foundation  
 Annenberg Foundation  
 Anonymous  
 Diana Buckhantz and  
 The Vladimir & Araxia  
 Buckhantz Foundation  
 Deborah Lawlor Culver  
 Barbara Herman  
 Karen Kondazian  
 LA County Arts & Culture  
 Sheila & Bryan Lamson  
 David E. Lee Foundation  
 The Estate of Lois Tandy

**CHAMPIONS \$20,000+**

Adrienne Brandriss  
 Carrie Chassin, Jochen Haber  
 LA Dept of Cultural Affairs  
 Carl & Roberta Deutsch  
 Foundation  
 Rabbi Anne Brener  
 LA County Dept of Probation  
 The Shubert Foundation  
 Mary Jo & David Volk

**GUARDIANS \$10,000+**

Nancy E. Barton Foundation  
 Joni & Miles Benickes  
 Lois Fishman  
 Audrey & Sydney Irmas  
 Charitable Foundation  
 Carrie Merkel Meadow and  
 Robert Meadow  
 The Phillips-Gerla Family  
 Susan Stockel  
 Allison Thomas  
 Warner Media  
 Dorothy Wolpert

**ANGELS \$5,000+**

The Berger Family  
 Foundation  
 Caplin Foundation  
 Chris Christensen and  
 Steven Warheit  
 Barbara Cohn  
 Lorraine Fishman and  
 Malcolm Armstrong  
 Barbara Goodhill  
 Geo Hartley  
 Mitchell Heskell  
 Barbara Mitchell and  
 John Beard  
 Jon & Dianne Moonves  
 Sharyl Overholser  
 Jerrie Whitfield and  
 Richard Motika  
 Jason Zelin and Allison Stein

**PRODUCERS \$2,000+**

Anonymous  
 Drs. Susan. E Bennett and  
 Gerry Pier  
 Paul Bluementhal and  
 Lynne Gaffikin  
 Kathie Boyle & Richard Yaffe  
 Sheri & Les Biller Family  
 Charitable Foundation  
 Pat Green & Vic Cole  
 Kerry Ehrin  
 Phyllis & Bryan Ellickson  
 East Hollywood  
 Neighborhood Council  
 Roger Janeway  
 Anita Lorber  
 Clarence E Heller Foundation  
 Alan Mandell  
 Jon Neustadter  
 Rabbi James & Sue Kaufman  
 Laurel & Robert Silton  
 Ruth Waddell & Eric Stockel  
 Suzanne & Donald Zachary

**DIRECTORS \$1,000+**

Anonymous  
 David Blane  
 Diane Cary  
 Roberta & Ronald Bloom  
 Mark Duttwelier and  
 Christine Pajak  
 Phyllis & Bryan Ellickson  
 Elizabeth Evans  
 Diane Gabe  
 Fariba Ghaffari  
 Susan Gosden  
 Barbara & Howard Gradet  
 Marjorie & Richard Fond  
 Carol & Robert Haymer  
 Chuck Mondrus  
 Lisa Pelikan  
 Debbi & Ashley Posner  
 Suzane & David Robinson  
 Lorraine & Lonnie Schield  
 Karen Malina White  
 Jerrie Whitfield and  
 Richard Motika

**PATRONS \$500+**

Anonymous  
 Linda Adams  
 Anonymous  
 Cheryl Armon  
 Jane Anderson & Tess Ayers  
 VJ Blue  
 Lorraine Evanoff  
 Michael Freeman  
 Beverly Ingram

Bret Israel  
 Susan & Joel Klevens  
 Diana & Joseph Kotzin  
 Benjamin Kushner  
 Melissa & Jae Lee  
 Ruth Matthias and  
 A.E. Benjamin  
 Fay & Les Mitchnick  
 Andrea Nelson  
 Arianne Neumark  
 Michael Oppenheim  
 Susan Steinhauer

**BACKERS \$250+**

Esther Lee Alpern  
 Ramona Bradbury  
 Deanne Bray and Troy Kotsur  
 Susan Damante  
 Joyce A Davis  
 Linda Dozier  
 H Allen Evans  
 James Freed  
 Rosa & Larry Goldstein  
 Patricia Goldstone  
 Tracy Gore  
 Helen Hasenfeld  
 Jean Himmelstein  
 Jerald & Leana Johnson  
 Shari Leinwand  
 Susie Mazur  
 Elizabeth Naftali  
 Paulina Nobel  
 Pat Oliansky  
 George & Cathi Rimalower  
 Sally & Brian Rivera  
 Adrien Survol Rivin  
 Edwin Robinson  
 Marleen & Hugh Scheffy  
 Lynn Sarf  
 Lisa Smolen  
 Esther & David Telerant  
 Toni Sherman

**SUPPORTERS \$100+**

Murray Aaronson  
 John Achorn  
 Judy & Michael Altman  
 Tony Amendola  
 Cecilia Andrews  
 Bob Ashen  
 Joel Asher  
 Diana Bartera  
 Sandy Baldonado  
 Jarrett Barrios  
 Sandy Berman

**SUPPORTERS \$100+**

Marty Blank  
 Alan Blumenfeld  
 Judith & Don Broder  
 Sarah Boulton  
 Donna Broby  
 Maggie Bryant  
 John Deans Buchan  
 Bill Butler  
 Peter Carrisoza  
 Steve Coats  
 Rachel Corell  
 David Coscia  
 Leigh Curran  
 Lawrence Davis  
 Avi Dechter  
 Marie Monique De Varennes  
 Edward Dignan  
 Barbara Don  
 Helen Dosik  
 Julie Downey  
 Sylvie Drake  
 Gail Eichenthal  
 Adrienne Enzer  
 Dundas Flaherty  
 Linda & Bob Fleischman  
 John Flynn  
 Sylvia Fogelman  
 Ellen & Harvey Friedman  
 Lesli Gilmore  
 Linda Goldberg  
 Lynne & Dean Goodhill  
 Marcia Goodman  
 Annette Gottlieb  
 Andrea Graham

Faye Greenberg  
 Susan Greenberg  
 Doris Haims  
 Ann Ryerson Hall  
 Michael Halloran  
 Winifred Hussey  
 Sheila & Milton Hyman  
 Sybil & Richard Israel  
 Clifton Justice  
 Eloise Kearns  
 Erica Keeps  
 Karen Lachter  
 Emily & John Lawrence  
 Helene & Jay Lederman  
 Anthony Lewis  
 Kristin Leuschner  
 Carol Lim  
 Dianne Lyons  
 Corey Madden  
 Katy Mamen  
 Fred Manaster  
 Carol & Bruce Marcus  
 Dena Marienthal  
 Leo Marks  
 Pauline Marks  
 Marjie Mautner  
 Marie Mazzone  
 Diane Daves McLaughlin  
 Nan McNamara  
 Deanne Mencher  
 Stephen Mendillo  
 Allan Miller  
 Penni Montalbano  
 Roxanne & Richard Morse  
 John Moschitta

Glen Nave  
 Rosalie Newell  
 Barbara Olier  
 David Overly  
 Samuel Parnell  
 Theodore Perkins  
 Ralph Pezoldt  
 Gwynne & Robert Pine  
 Evelyn Perl  
 Antoinette Perry  
 Lenny Potash  
 Pamela Roberts  
 Thelma & Eliot Samulon  
 Lynne Schroeder  
 Kate Shein  
 Sandy Schuckett  
 Deborah Silverman  
 Steve Slaughter  
 Janet & Michael Soffer  
 Susanne Spira Suanne Spoke  
 Joel Swetow  
 Judith & Melvyn Swope  
 Judy & Mark Taylor  
 Cynthia Thomas  
 Marcelo Tubert  
 Patricia & Richard Walter  
 Penelope Ward  
 Joanne Webb  
 Jamie & Larry Weisenberg  
 Kathryn & Irwin Weiss  
 Jerry Weil  
 Laurie & Stan Whitcomb  
 Barry Wiener  
 Lynda & Darrel Wilson  
 Robb Zelonky

*We Thank You All!*

We have made every effort to acknowledge your generosity accurately. If an error has been made, please notify The Development Office immediately. For information on how you can support The Fountain Theatre, including recurring gifts, gifts of stock, and legacy gifts, please contact Barbara Goodhill at [barbara@fountaintheatre.com](mailto:barbara@fountaintheatre.com). For additional donor acknowledgments, please go to [www.fountaintheatre.com](http://www.fountaintheatre.com)

Scenic Painter - Marine Walton    Video Assistant – Fritz Davis  
 Photographer/Video – Jonathan Benavente

