

Antaeus Theatre Company Presents

HEDDA GABLER

by Henrik Ibsen

In a Version by Andrew Upton

Directed by Steven Robman

Scenic Designer

Se Hyun Oh

Lighting Designer

Leigh Allen

Props Designer

Erin Walley

Costume Designer

Leah Piehl

Sound Designer

Cricket Myers

Production Stage Manager

Kristin Weber

Adaptation © Andrew Upton 2004

Ensemble

Tony Amendola*, Daniel Blinkoff*, JD Cullum*,
Elizabeth Dennehy*, Nike Doukas*, Karianne Flaathen*,
Adrian LaTourelle*, Kwana Martinez*, Lynn Milgrim*, Ned Mochel*,
Ann Noble*, Jaimi Paige*, James Sutorius*, Amelia White*



**member, Actors' Equity Association, the union of
professional Actors and Stage Managers in the United States*

The video and/or audio recording of this performance by any means whatsoever are strictly prohibited.

Artistic Directors' Note

Welcome to Antaeus and welcome to the world of *Hedda Gabler*. This production has a special significance for the company as it will be our last one here on Lankershim Blvd. On April 18 construction began on our new home in Downtown Glendale and we are looking forward to opening the doors and sharing L.A.'s newest home for the arts with you all.

Beginning with the company's first full season in 2010, these past six years have been a time of tremendous growth and artistic vitality. Thanks to the generosity of our company members and loyal patrons, we have been able to offer the Los Angeles community an ever-expanding array of programming including our critically-acclaimed productions, the Antaeus Academy, arts education programs, the Antaeus Playwrights Lab, as well as countless readings and workshops.

With two theaters and a larger classroom and library space, our new home in Glendale will allow us to grow and expand the work we've begun here on Lankershim Blvd. Everything we do is guided by the desire to create a community of passionate artists and audiences in an increasingly connected yet, somehow, more isolating world. Through our work we seek to inspire debate, conversation, friendship, and most of all a sense of community. After all, live theater is the original social media!

There's no better time to become part of the vibrant Antaeus community. During construction we will continue to raise funds in order to finish the building and hit the ground running once we open the doors. The arrival of a new theater is a rare event in the cultural life of a city, one that requires a passionate group of supporters behind it, willing it into existence. Join us on this exciting journey and become a contributor to Antaeus today!

Thank you for being here and enjoy the show.

Bill, Rob, and John

MISSION

Antaeus is a cooperative theater ensemble founded to empower the actor and to bring classical theater to Southern California. The company exists to create a family of artists and audiences and is dedicated to exploring stories with enduring themes.

VISION

PRODUCTION: In a virtual, media-driven world, we value the communal experience of live theater. We are dedicated to excellence in the performance of the written word. We challenge and inspire our community through storytelling that is visceral and immediate.

PROCESS: We are devoted to the ongoing development and growth of our artists and remain committed to exploring new ways of rehearsing and performing. We nurture an environment where artists can risk failure in the pursuit of greatness.

EDUCATION: We believe that learning never ends. We train ourselves; we train the next generation; and we include our community in this work.

Director's Note

What strikes me about *Hedda Gabler* is its focus on the double-edged sword of entitlement. Nearly all the characters in the play struggle with the conflict between what they think they deserve and what they actually find on their respective plates. Hedda, the General's privileged daughter, is facing a stultifying life that won't provide her with either the advantages or excitement of her youth. The workaholic Tesman, a champion of his academic specialty, can't help feeling inferior to his disreputable rival. Judge Brack has power and prestige in the town, but lusts after the one thing he can't attain: Hedda. Even Thea, after rehabilitating Løvborg and capturing him as her "soul mate," has to start over in order to savor her accomplishment. And Løvborg, convinced that he is destined to be recognized for the defiant fist he raises in the face of social norms, ends up as gruesomely far from that as possible.

All of these characters believe they are owed something, yet it remains outside their grasp, and none of them can control the situation the way they think they should. Something stalls them, or scares them, or fools them. Is it bad luck? Accidents of history? A spirit or will spoiled by a sense that they're "entitled" to satisfaction?

As you can tell, I'm not blaming "Victorian mores" for either Hedda's or anybody else's behavior in the play. I don't think the problems dramatized in *Hedda Gabler* derive only from the conventions of a particular era, and in any case the social reforms Ibsen may have been seeking were far from accomplished even a century after the play's premiere in the late 19th century. To emphasize this, I shifted the period of this production some 30 years forward from where Ibsen set it, from the early 1890s to the early 1920s--not a time frame most people would immediately associate with restrictive or limited behavior. And that's just my point. What keeps a person from being able to shape or control his or her life? A good question--and the reason why I wanted to direct this play.

--Steven Robman, Director

HEDDA GABLER

AUNT JULLE Lynn Milgrim/Amelia White

BERTE Elizabeth Dennehy/Karianne Flaathen

JØRGEN TESMAN JD Cullum/Adrian LaTourelle

HEDDA GABLER Nike Doukas/Jaimi Paige

THEA ELVSTED Kwana Martinez/Ann Noble

JUDGE BRACK Tony Amendola/James Sutorious

EJLERT LØVBORG Daniel Blinkoff/Ned Mochel

The *Hedda Gabler* casts are the Generals and the Pistols.
The mixed casts on Thursday and Friday nights are called the Fjords.
Go to antaeus.org to see each cast's performance schedule.
(Subject to change)

All Antaeus full productions are partner cast. Please see insert for this performance's cast.

*Hedda Gabler runs approximately 2 hours and 20 minutes,
with one 10-minute intermission.*

For the Production

Costume Associate
Lena Sands

Costume Assistant
Beryl Brachmann

Assistant Stage Manager
Grayson Stamps

Assistant Director
Ricka Fisher

Wardrobe Mistress
Kristin Weber

Draper
A. Jeffrey Schoenberg

Production Manager
Adam Meyer

Assistant Technical Director
Rene Parras Jr.

Scenic Painter
Orlando de la Paz

Why Partner Casting

Double casting, or as we call it “partner casting” (two actors sharing the same role) has been an Antaeus practice since we formed our company in 1991. Partner casting was originally a logistical solution to our members’ need to make a living while committing to the demands of a theatre performance schedule. Sharing roles brings surprising benefits. We learn from each other as we collaborate the creation of a character. In performance, the constantly changing lineup keeps our performances sharp. We are constantly on our toes and open to the unexpected. Antaeus audiences can count on seeing excellent actors working at the top of their game. The strength of our ensemble is a direct result of the partner casting process.

Antaeus Programming is Supported in Part by

S. MARK TAPER FOUNDATION THE WELLS FARGO FOUNDATION
THE SHUBERT FOUNDATION
JOHN AND BEVERLY STAUFFER FOUNDATION
THE GREEN FOUNDATION
THE CLARENCE E. HELLER CHARITABLE FOUNDATION



COMPANY - HEDDA GABLER



Tony Amendola



Daniel Blinkoff



JD Cullum



Elizabeth Dennehy



Nike Doukas



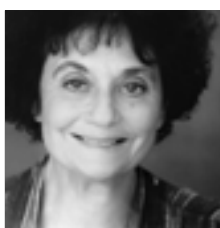
Karianne Flaathen



Adrian LaTourelle



Kwana Martinez



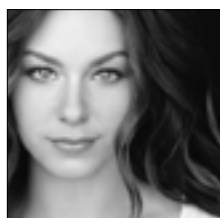
Lynn Milgrim



Ned Mochel



Ann Noble



Jaimi Paige



James Sutorius



Amelia White

ENSEMBLE

TONY AMENDOLA (JUDGE BRACK):

Founding Member at Antaeus. Theatre: Mark Taper Forum, South Coast Rep, A.C.T., The Old Globe, La Jolla Playhouse, Williamstown Theatre, Center Stage, and the Oregon, California, and Utah Shakespeare Festivals. Tony was an associate artist, actor, and director at the Berkeley Rep Theatre for 10 years. Directing credits: *Savages*, *The Night of the Iguana*, *Filumena* (Berkeley Rep), *All's Well That Ends Well* (Oregon Shakespeare), *The Merchant of Venice*, *The Tempest* (California Shakespeare). Film credits: *Meddler*, *Blow*, *The Mask of Zorro*, *Annabelle*, John Sayle's *Lone Star*. Recent TV credits include: *The Mentalist*, *Dexter*, *New Girl*, *Being Mary Jane*, *NCIS*, *The West Wing*, *Stargate SG-1* (Bra'tac) and *Continuum* (Kagame). He is currently recurring on *Once Upon a Time* (Geppetto). VO work includes: *World of Warcraft*, *Black Ops*, *Fallout*, and Narrator of *Land Before Time*. For Jerry Turner (OSFA).

DANIEL BLINKOFF (EJLERT LØVBORG):

LA theatre credits include: *Sondheim UnScripted*, *Western UnScripted*, *Chekhov UnScripted* and *Shakespeare UnScripted* (Impro Theatre/Falcon Theatre and Pasadena Playhouse), *The Belle of Belfast* (EST), *Macbeth* (Antaeus), *The Children* (The Theatre @ Boston Court), *Opus* (Fountain Theatre, StageSceneLA Award-Best Actor), *Major Barbara*, *An Italian Straw Hat* (Garland Award, Best Actor), *The Intelligent Design of Jenny Chow*, *The School for Wives*, *Nostalgia*, and *A Christmas Carol* (SCR), and *A*

Distant Shore (CTG). Film/TV credits include: *With Honors*, *Crossing the Bridge*, *Rockabye*, *Close to Home* (recurring), *Charmed*, *NYPD Blue*, and *Law & Order*. Mr. Blinkoff received his MFA from The Yale School of Drama.

JD CULLUM (JØRGEN TESMAN):

A veteran of Southern California stages and an Antaeus since 1993, JD most recently appeared in *Cloud 9*. He has starred in plays at the Mark Taper Forum, Geffen Playhouse, Kirk Douglas Theatre, South Coast Repertory and the Pasadena Playhouse. He is the recipient of multiple Garland Awards and L.A. Drama Critics Circle Awards for his work. Recent on-camera credits include: *Aquarius*, *Code Black*, *Bones*, *The Newsroom*, *The Lone Ranger* and *Mad Men*.

ELIZABETH DENNEHY (BERTE):

Elizabeth is an original creator of *Tony and Tina's Wedding*, a graduate of Hofstra University and LAMDA. Theatre: *Henry IV, Part One* (Antaeus), *Cyrano* (Independent Shakespeare Co.), *A Streetcar Named Desire*, *Dancing at Lughnasa*, *The Secret Rapture* (SCR), *Vampire Lesbians of Sodom* (Provincetown Playhouse NY), *Henry V* with Kevin Kline (the NYSF), *As You Like It* (Shakespeare & Co), *Opera Comique* (Kennedy Center), *Savage in Limbo* (Zephyr). Film: *Janeane from Des Moines*, *Hancock*, *Red Dragon*, *Gattaca*, and *The Game*. TV: *Masters of Sex*, *The Mentalist*, *Charmed*, *Seinfeld*, *NYPD Blue*, and *Star Trek the Next Generation*.

NIKE DOUKAS (HEDDA GABLER):

Nike has appeared with Antaeus in *The Wood Demon*, *The Liar*, *Tonight at 8:30*, *Cousin Bette*, and countless readings. She has also directed readings of

Flare Path and *Blithe Spirit*, and taught Shakespeare and Scene Study in the Antaeus Academy. Her most recent stage credits are *Casa Valentina* at the Pasadena Playhouse, *Fallen Angels* at the Jewel Theatre in Santa Cruz and this Fall she will appear in *Three Days in the Country* at the Kinetic Theatre Company in Pittsburgh. Other credits include South Coast Repertory, PICT Classic Theatre (Pittsburgh), ACT Theatre (Seattle), The Old Globe, Mark Taper Forum, Shakespeare Festival LA, Berkeley Repertory Theatre, Shakespeare Santa Cruz, The Berkeley Shakespeare Festival, and The American Conservatory Theater, where she received her MFA in Acting. Her many TV appearances include *Modern Family* and a recurring role on *Desperate Housewives*.

KARIANNE FLAATHEN (BERTE):

Karianne was last seen at Antaeus in *Wedding Band*. Other Los Angeles theatre credits include: *Top Girls* (Antaeus, StagesceneLA Award for Best Lead Actress), *Miracle on South Division Street* (Colony Theatre), *Peace In Our Time* (Antaeus), *Celebration*, *The Typists*, *The Thin Man*, etc. all with the A2 Ensemble. UK Theatre: *The Woman In Black* (No. 1 UK and Asia Tour), *The Gift* (London Tour), *The Two Noble Kinsmen* (Latchmere Theatre, Battersea). Film: *Diani & Devine meet The Apocalypse*, *I Am I*, *The Selling*. Webisodes: *The Sanctum*, *Mary Olson*, *Take That Joy*. Karianne received her training from Drama Studio London and SUNY Purchase. Proud member of Antaeus, Actors' Equity Association, and the Pro99 movement. Website: kflaathen.com

ADRIAN LATOURELLE (JØRGEN

TESMAN): Adrian has appeared in numerous television series such as *NCIS, Castle, The Legend of Korra, Last Resort, The Closer, House, NCIS:LA, Boston Legal, Without a Trace, Criminal Minds, Numb3rs*, and *Sons of Anarchy*. His many stage credits include work in some of the best theaters in the country, such as the Mark Taper Forum, the Shakespeare Theatre in DC, The Old Globe, San Jose Repertory, the Dallas Theater Center, Antaeus Theatre Company, and the Yale Repertory Theatre. Adrian has also worked abroad, performing in theater and film in Russia and the Netherlands.

KWANA MARTINEZ (THEA ELVSTED):

Is pleased to work with Antaeus again, having last appeared as Antigone in *The Curse of Oedipus*. SoCal: South Coast Repertory (World Premiere of Rajiv Joseph's *Mr. Wolf*), San Jose Repertory (*Sonia Flew*), The Old Globe (*Compleat Female Stage Beauty*), Ensemble Theatre of Santa Barbara (*Crime and Punishment*); North Coast Repertory, The Colony, Laguna Playhouse, Pasadena Playhouse, and Center Theatre Group. Regional/NYC: Commonwealth Shakespeare (*Romeo and Juliet, The Tempest, A Midsummer Night's Dream*) The Denver Center (*The Merry Wives of Windsor*), Milwaukee Repertory, American Repertory Theatre, Arizona Repertory, The Alley, La Mama, and New York Theatre Workshop. Kwana appears in numerous commercials, is on television and film, appears in numerous commercials, and is a Vassar and Harvard grad. kwanamartinez.com

LYNN MILGIM (AUNT JULLE): At

ANTAEUS: *Wedding Band* (Ovation Nomination Best Supporting Actress, Stage Raw Awards, Best Ensemble), *Tonight at 8:30*, *The Malcontent* (StageSceneLA Award, Featured Actress). Broadway: *Otherwise Engaged* (with Tom Courtenay, Harold Pinter, director); *Bedroom Farce*, (Peter Hall, director); *Charley's Aunt*, and international tour of *Brighton Beach Memoirs* (Gene Saks, director). Her many off-Broadway appearances include *Win/Lose/Draw*, *Echoes*, *Macbeth*, *Crimes of Passion*, *City Scene*, *Talking With*, and *Ribcage* at venues that include Manhattan Theatre Club, NY Shakespeare Festival, and Second Stage. She has played leading roles in regional theatres nationwide, including Boston's Charles Playhouse, Cincinnati's Playhouse-in-the-Park, D.C.'s Arena Stage, Syracuse Stage, Hartford Stage, and Actors' Theatre of Louisville. Los Angeles theatre include appearances at LATC, La Mirada, and numerous plays at South Coast Repertory, most recently *The Heiress*, *Trip to Bountiful*, and the world premiere of Samuel D. Hunter's *Rest*. She has been a series regular on pilots for ABC and CBS and has guest-starred on numerous television shows, most recently *Southland* and *Franklin and Bash*.

NED MOCHEL (EJLERT LØVBORG):

Ned is so pleased to be a part of this incredible cast. He appeared in Sam Hunter's *A Permanent Image* at Rogue Machine Theatre last summer. Ned hails from Chicago where he worked for The Goodman Theatre, The Court Theatre, Lifeline Theatre,

Remains, and many others. He wishes to thank his pack at home for all the love and support

ANN NOBLE (THEA ELVSTED): At

ANTAEUS: *The Liar*, *The Crucible*, *Macbeth*, *Peace in Our Time*, *The Malcontent*. Most recently, she performed in *Stanley Ann: The Unlikely Story of Barack Obama's Mother* (Stage Raw Nomination, Best Solo Performance) produced by Victoria Mudd, Elizabeth Yng-Wong, and LA's LGBT Center where she was also seen in Edward Albee's *The Goat, or Who Is Sylvia?* (Stage Raw Award, Best Actress; Ovation Nomination, Best Actress), and *The Laramie Project: Ten Years Later* (Ovation Nomination, Best Production). Other LA credits include: *Other Desert Cities* at ICT of Long Beach, *The Light Princess*, *The Miraculous Journey of Edward Tulane* and *Anastasia Krupnik* both at South Coast Repertory, *Belfry* at the Malibu Playhouse, *An Ideal Husband* at Sierra Madre Playhouse, *Orange Flower Water* at the Victory, and *And Neither Have I Wings To Fly*, *Sidhe*, *The Friendly Hour*, *Shove*, and *Bunbury*, all at The Road. annnoble.com

JAIMI PAIGE (HEDDA GABLER): This

is Jaimi's first production with Antaeus. Previous local stage credits include: *Venus In Fur* at South Coast Repertory; *Tender Napalm* at Six01 Studio, *The Collector*, *Jesse Boy*, and *Green Eyes/Rooming House* at Ruskin Theatre Group, *Ghosts* and *Great Expectations* at A Noise Within, and *Sleeping Ugly* at the Santa Monica Playhouse. Other notable stage credits include *Juliet (Romeo and Juliet)*, *Helena (A Midsummer Night's Dream)* and *Girl* in the world premiere of Tennessee

Williams' *Green Eyes*, featured at the Tennessee Williams Theatre Festival. Her television and film credits include: *Rizzoli & Isles*, *The Mentalist*, *Medium*, *Ghost Whisperer: The Other Side*, *Diagnosis X*, the feature film *Peacock* and the upcoming feature films *Within the Dark*, *Desolation* and *Stephanie*. Follow Your Bliss!

JAMES SUTORIUS (JUDGE BRACK):

At ANTAEUS: *Henry IV, Part One*, *The Crucible*, *Macbeth*, *The Seagull*, *The Autumn Garden*, and *ClassicsFest* projects *A Delicate Balance* and *Wrecks*. The Old Globe: *Who's Afraid of Virginia Woolf* (Best Actor Award), *Lincolnesque* (Best Featured Actor Award), *The Price*, *The Savannah Disputation*. La Jolla: *Glengarry Glen Ross* (Nominated Best Featured Actor Award). Broadway: *The Farnsworth Invention*, *Conversations with My Father*, *The Changing Room*, *Hamlet*. Off Broadway: *Sexual Perversity in Chicago*. Regional Theater: *Other Desert Cities*, *The Merchant of Venice*, *Hamlet*, *Uncle Vanya*, *The Price*, *A Perfect Wedding*, *A Man for All Seasons*, *Antony and Cleopatra*, *A Christmas Carol*. Film/TV: IMDB will tell all.

AMELIA WHITE (AUNT JULIE): AT

ANTAUES: *You Cant Take it with You*, *Peace in Our time* and *Tonight at 8:30*. Broadway credits include *Crazy for You*, *The Heiress* and *Cat on a Hot tin Roof*. She's worked Off-Broadway, and at extensive regional theatres. She received a Theatre World Award for her work in *The Accrington Pals* at the Hudson Guild. Most recently she appeared with The Mint Theatre in NYC in *Women Without Men*, which was nominated for a Drama Desk and

a Lucille Lortel Award. She works on radio with the California Artists Radio Theatre. Amelia was born in Nottingham, trained at the Central School of Speech and Drama in London, is married to Antaeus actor Geoffrey Wade, and is a proud AEA member.

PRODUCTION

ANDREW UPTON (PLAYWRIGHT):

Andrew Upton was co-artistic director of the Sydney Theatre Company (STC) with Cate Blanchett from 2008 to 2013, after which he took over as sole artistic director until late 2015. Writing credits include many classical adaptations including Chekhov's *The Present* for STC (dir. John Crowley, with Cate Blanchett and Richard Roxburgh); Maxim Gorky's *Children of the Sun* for STC (dir. Kip Williams); Michail Bulgakov's *The White Guard* for the National Theatre, UK (dir. Howard Davies); Chekhov's *Uncle Vanya* for STC (dir. Tamás Ascher, with Cate Blanchett and Richard Roxburgh); Maxim Gorky's *Philistines* for the National Theatre UK, (dir. Howard Davies); a co-adaptation with Simon Stone of Ingmar Bergman's *Face to Face* for STC (dir. Simon Stone); and original play *Riflemind* for STC and Trafalgar Studios London (dir. Philip Seymour Hoffman, with John Hannah). For screen, Andrew co-wrote *Gone* (2006) with James Watkins, which was directed by Ringan Ledwidge and starred Amelia Warner. Most recently, he adapted Tim Winton's short story 'Reunion' as part of feature film, *The Turning* (2013).

STEVEN ROBMAN (DIRECTOR):

Steven recently staged Sebastian Barry's *The Steward of Christendom*, starring Brian Dennehy, at the Mark

Taper Forum and Bernard Weinraub's *Above the Fold*, starring Taraji P. Henson, at the Pasadena Playhouse. He directed Kathryn Graf's *The Snakecan* at the Odyssey Theatre and her *Who's Afraid of David Hare?* in the Antaeus Theatre Company's *ClassicsFest* last season. He has also staged plays at the Longwharf Theatre in New Haven, Guthrie Theatre in Minneapolis, Actor's Theatre of Louisville, Goodman Theatre in Chicago, Baltimore Center Stage, Yale Repertory Theatre, and in New York at the Manhattan Theatre Club, Phoenix Theatre and Playwrights Horizons. His work for television includes over 100 hours of comedy series, dramatic series, and movies-of-the-week.

BILL BROCHTRUP (CO-ARTISTIC DIRECTOR): At ANTAEUS: *Cloud 9*, *Mrs. Warren's Profession*, *The Seagull*, *Peace in Our Time*, *The Malcontent*, *Cousin Bette*, *Tonight at 8:30*, *Pera Palas*. Theatre: Primary Stages, South Coast Repertory, The Fountain, Black Dahlia, Odyssey, LA Theatre Works, Pasadena Playhouse, Rogue Machine. Film: *Life as We Know It*, *He's Just Not That Into You*, *Ravenous*. Television: *Major Crimes*, *Shameless*, *Dexter*. Series Regular: *Public Morals*, *Total Security*, *NYPD Blue*. Spoken Word: *Sit 'n Spin*; *Rant & Rave*; *Spark Off Rose*, and numerous other Storytelling venues. billbrochtrup.com

ROB NAGLE (CO-ARTISTIC DIRECTOR): At ANTAEUS: *The Liar*, *Macbeth*, *Peace in Our Time*. Other theatre includes: South Coast Repertory, Denver Center Theatre Company, Troubadour Theater Company, Portland Center Stage, Mark Taper Forum, Center Stage, Old Globe, San Jose Repertory,

Black Dahlia Theatre, Shakespeare Theatre Company. Film: *Mother's Day*, *Fishing Naked*, *Boost*, *New Year's Eve*, *Life as We Know It*, *The Soloist*, *Fun with Dick and Jane*, *Cellular*, *American Wedding*. Television: *The Librarians*, *Grey's Anatomy*, *CSI*, *Mistresses*, *Criminal Minds*, *Touch*, *Castle*, *Major Crimes*, *NCIS*, *Harry's Law*, *Mad Men*, *Eli Stone*, *Cold Case*, *Studio 60 on the Sunset Strip*, *Without A Trace*, *Everwood*, *The Guardian*, *Buffy the Vampire Slayer*, *Dawson's Creek*. Education: Northwestern University. Wife: Heather Allyn. Pug: Roosevelt. Geek: robnagle.com

JOHN SLOAN (CO-ARTISTIC DIRECTOR): John joined Antaeus in 2005 after appearing as Eilif in *Mother Courage and Her Children*. Other Antaeus productions include *King Lear*, *The Dickens Project* (with LATW) and *Macbeth*. Elsewhere in Los Angeles, he has performed at The Mark Taper Forum, The Geffen Playhouse, South Coast Repertory, Pasadena Playhouse, Theatre @ Boston Court and The Odyssey, where he appeared in *No Man's Land* with Alan Mandell and Larry Pressman. Other credits from around the country include Soho Rep, La Mama Etc., American Jewish Theater, The Mint Theater Company, Denver Center Theatre Company, The Intiman Theatre (Seattle) and the Alabama Shakespeare Festival. His television appearances include leading roles in the SyFy mini-series *The Triangle*, *Happy Hour* on FOX, and the Hallmark movie *The Seven Year Hitch*. Other credits include *Bones*, *How I Met Your Mother*, *Liz & Dick*, *Farmed & Dangerous*, *Private Practice*, *Grey's Anatomy*, *The Glades* and *CSI:NY*. johnsloan.com

ANA ROSE O'HALLORAN

(EXECUTIVE DIRECTOR): Ana Rose joined Antaeus last year and has over 10 years of non-profit fundraising and management experience. Prior to joining Antaeus, Ana Rose worked as the Senior Director of The Pablove Foundation and in various roles in the Development Department at Center Theatre Group. She received her MFA in Theatre Management from California State University, Long Beach and dual BFAs in Theatre Management and Performance from Ohio University.

SE HYUN OH (SCENIC DESIGNER):

Se Oh recently co-designed *Office Hour* with Takeshi Kata, a new play written by Julia Cho, directed by Neel Keller at South Coast Repertory. Selected Los Angeles credits include *BED*, directed by Jennifer Chambers at the Echo Theatre Company; *Mr. Marmalade*, directed by Olivia Trevino at The Garage Theatre; *Vampire Lesbians of Sodom*, directed by Raina Pratto at Long Beach Playhouse. Associate opera and musical credits include: *A Midsummer Night's Dream*, directed by Paul Curran at Teatro dell'Opera di Roma; *Le Roi Malgre Lui*, directed by Thaddeus Strassberger at Bard SummerScape; *Another Sun*, a musical arranged by Joseph A. Baker, directed by Kim Jin-Young at The Hyundai Theatre Company. Se Oh holds an MFA in Stage Design from Northwestern University. sehyunoh.com

LEAH PIEHL (COSTUME DESIGNER):

Recent credits include: *Mr. Wolf* and *The Light in the Piazza* (South Coast Repertory); *Race* (Kirk Douglas/Center Theater Group); *Pygmalion* (Pasadena Playhouse); *The Steward of Christendom*

(Mark Taper Forum/Center Theatre Group); *Twist Your Dickens* (Kirk Douglas Theatre/Center Theatre Group); *The Most Deserving* (Denver Center Theater Company); *Stardust* (REDCAT); *Intimate Apparel* (LADCC winner, Best Costume Design); *The Heiress* (Pasadena Playhouse, Ovation nominated); *All My Sons, Come Back Little Sheba, The Doctor's Dilemma* and *The Eccentricities of a Nightingale* (A Noise Within); *Paradise Lost* (Intiman Theatre); *Futura, The Pain and the Itch*, and *Tartuffe* (The Theatre@Boston Court); *bobrauschenbergamerica, Tree* (Inside the Ford); *Boom, Men of Tortuga* (Furious Theatre Company); *Saudade* (UCLA Live); *Full Still Hungry* (Ford Amphitheater). She recently designed the feature film *All Stars*. Her work has been featured at MOMA, Art Basel Miami, and 2010 Whitney Biennial. Piehl teaches at USC; she has a BA from UC Berkeley and her MFA in costume design from CalArts. leahpiehl.com

LEIGH ALLEN (LIGHTING DESIGNER):

Leigh is a recipient of the Los Angeles Drama Critics Circle Award for Career Achievement. Accolades include: Ovation, Best Production and Lighting nomination, *Dying City*; LADCC award, Production, *One Night in Miami*; Garland Award, *Cousin Bette*; LA Weekly Award, *Treefall*; Ovation, Production of the Year, *Killer Joe*; GLAAD Award, *Like a Dog on Linoleum*; Macy Award, *The Secret Garden*; and LADCC and LA Weekly Awards, *Johnny Got His Gun*. Other lighting design credits include the world premieres of *Boise, USA* (Matrix Theatre) and *Flim Flam: Houdini and the Hereafter* (Malibu Playhouse), both written by Gene Franklin Smith. Leigh has also

toured with *Masters of Illusion, Live!* and has designed for cruise lines, musical theater companies, regional theaters, universities, and many more. In her spare time, she teaches at Santa Monica College.

CRICKET MYERS (SOUND

DESIGNER): On Broadway, Cricket earned a Tony Nomination and a Drama Desk Award for her design of *Bengal Tiger at the Baghdad Zoo*. Off Broadway designs include *The Marvelous Wonderettes*. She has also designed regionally at The Geffen Playhouse, La Jolla Playhouse, The Ahmanson, Mark Taper Forum, Berkeley Rep, Arena Stage, South Coast Repertory, the Kirk Douglas Theatre, and the Pasadena Playhouse. Other selected L.A. designs include NoHo Arts Center, The Ghost Road Company, East West Players, The Celebration Theatre, and Circle X. She has earned 18 Ovation Nominations, as well as winning The Kinetic Award for Outstanding Achievements in Theatrical Design, an LADCC and a Garland Award. cricketmyers.com

ERIN WALLEY (PROPS DESIGNER):

is very excited to be working on her first production with Antaeus Theatre Company. A graduate of the University of Missouri, Kansas City with an MFA in Theatre Scenic Design, her recent prop work includes *Six Characters in Search of an Author*, *Antigone*, and *All My Sons* at A Noise Within, *Always...Patsy Cline* and *A Christmas Story* at Sierra Madre Playhouse, and *Shiv* at The Theater @ Boston Court. Additionally, she has

KRISTIN WEBER (PRODUCTION STAGE MANAGER/WARDROBE MISTRESS):

At ANTAEUS: *The Crucible, The Liar, Top Girls, The Curse of Oedipus, Wedding Band, Henry IV, Part One, Picnic, Uncle Vanya, Cloud 9* and various *ClassicsFests*. Kristin graduated at the top of her class from Chapman University where she majored in Entertainment Theatre Technology with an emphasis in stage management. Other credits include: *Driving Miss Daisy, Women in Mind* (Sierra Madre Playhouse) and *Wicked Lit 2012* (Unbound Productions). She is glad to call Antaeus her artistic home. Big thanks to her family and friends for their endless love and support. Special thanks to Steve, Ricka, Grayson, Adam, Robin, Emyli, Serena, Ana Rose, and to the best Artistic Directors around! Enjoy the show!

RICKA FISHER (ASSISTANT DIRECTOR):

A producer and director, Ricka was co-founder of Off Off Broadway The Production Company, followed by a long studio and network career making scores of TV movies and miniseries for broadcast and cable networks. As Director of Development at the Wallis Annenberg Center for the Performing Arts for nearly 10 years, she supervised the initial capital campaign culminating in the Inaugural Season 2013 - 2014. More recently, she has directed readings and workshops at Skylight Theatre, GreenLight One-Act festival, Antaeus and other LA venues. B.A. Dramatic Arts UC Berkeley; MFA Theatre Directing Carnegie-Mellon University.

ENSEMBLE MEMBERS

Tony Abatemarco, John Achorn, Rhonda Aldrich, John Allee, Tony Amendola, John Apicella, Tessa Auberjonois, Fran Bennett, Gigi Bermingham, Daniel Bess, Daniel Blinkoff, Peggy Ann Blow, Andrew Borba, Chad Borden, Bill Brochtrup, Anne Gee Byrd, Stephen Caffrey, Jane Carr, Emily Chase, Josh Clark, Avery Clyde, Mimi Cozzens, Barry Creyton, JD Cullum, Gregg Daniel, Ramón de Ocampo, Jason Dechert, Jen Dede, Mark Deklin, Joe Delafield, John DeMita, Seamus Dever, Dawn Didawick, Francia DiMase, Mark Doerr, Nike Doukas, Sarah Drew, Apollo Dukakis, Frank Dwyer, Paul Eiding, Terry Evans, Wyatt Fenner, Martin Ferrero, Karianne Flaathen, Julia Fletcher, Karolie Foreman, Bo Foxworth, Jeff Thomas Gardner, Kimiko Gelman, Eve Gordon, Dana Green, Harry Groener, Arye Gross, Graham Hamilton, Richard Herd, Steve Hofvendahl, Joe Holt, Shannon Holt, Gregory Itzin, Veralyn Jones, John-David Keller, Michael Kirby, Lily Knight, Tamara Krinsky, Adrian LaTourelle, Melanie Lora, Henri Lubatti, Kate Maher, Leo Marks, Anna Mathias, Dakin Matthews, Sandra McClain, Don R. McManus, Anne McNaughton, Micheal McShane, Bill Mendieta, Adam Meyer, Lynn Milgrim, Allan Miller, Richard Miro, Elyse Mirto, William Mitchell, Rebecca Mozo, Rob Nagle, Claudette Nevins, Jonathan Nichols, Ann Noble, Jeffrey Nordling, Linda Park, Angela Paton, Zoe Perry, Melinda Peterson, Christina Pickles, Robert Pine, Lawrence Pressman, Philip Proctor, John Prosky, Deborah Puette, Jeanne Sakata, Mikael Salazar, Raphael Sbarge, Ned Schmidtke, Armin Shimerman, John Sloan, Adam J. Smith, Kurtwood Smith, Devon Sorvari, Janellen Steininger, Joanna Strapp, Susan Sullivan, James Sutorius, Elizabeth Swain, Joel Swetow, Kitty Swink, Jeanne Syquia, Rebekah Tripp, Marcelo Tubert, Peter Van Norden, Geoffrey Wade, Patrick Wenk-Wolff, Laura Wernette, Stoney Westmoreland, Karen Malina White, Amelia White, Jules Willcox, Paul Willson, Alicia Wollerton

ASSOCIATE MEMBERS

Heather Allyn, Christopher Breyer, Matthew Goldsby, Robert Goldsby, Paul Lazarus, Michael Murray, A. Jeffrey Schoenberg, Stephanie Shroyer

A2 ENSEMBLE

Brian Abraham, Erin Barnes, John Bobek, Shannon Clair, Christopher Clowers, Brett D. Colbeth, Paul Culos, Nicholas D'Agosto, Julia Davis, Etta Devine, Liza de Weerd, Gabriel Diani, Jeff Doba, Daniel Dorr, Drew Doyle, Nicole Erb, James Ferrero, Alexandra Goodman, Belen Greene, Matthew Grondin, Simon Helberg, Raleigh Holmes, Sally Hughes, Antonio Jaramillo, Danielle Jones, Dylan Jones, Desiree Mee Jung, Jim Kane, Connor Kelly-Eiding, Alexander Knox, Lindsay LaVanchy, Ian Littleworth, Aaron Lyons, Jill Maglione, Abigail Marks, Stephanie Mitchell, Lisa Valerie Morgan, Lily Nicksay, Maria Pallas, Tro Shaw, Jason Thomas, R. Scott Thompson, Danielle Thorpe, Jocelyn Towne, Abby Wilde, Buck Zachary, Lizzie Zerebko

ANTAEUS

Theatre Company

5112 Lankershim Blvd., NoHo, CA 91601

box office: 818.506.1983 administration: 818.506.5436 antaeus.org



Antaeus Theatre Company



Antaeus Theatre



Antaeus Theatre

REVIEW US ON YELP AT YELP.COM/BIZ/THE-ANTAEUS-CO-NORTH-HOLLYWOOD

Antaeus Staff

Co-Artistic Directors

Bill Brochtrup, Rob Nagle,
John Sloan

Associate Artistic Directors

Armin Shimerman, Kitty Swink

Executive Director

Ana Rose O'Halloran

Company Manager

Robin Campbell

Development Manager

Serena Johnson

Marketing & Development Assistant

Emyli Gudmundson

Production Manager

Adam Meyer

Bookkeeper

Amy Michner

Artwork & Graphic Design

Mila Sterling

Publicist

Lucy Pollak

Arts Ed Committee

John Prosky, John Sloan, Ann Noble,
Janellen Steininger, Kitty Swink

Arts Ed Teaching Artists

John Apicella, Elizabeth Berman
Ramón de Ocampo, Karole Foreman
Bo Foxworth, Amad Jackson, Ian Littleworth,
Anna Mathias, Ty Mayberry, Michael McShane,
Ann Noble, John Prosky, Tro Shaw, R. Ernie
Silva, Darin Singleton, Marcelo Tubert

Antaeus Founders

Dakin Matthews, Lillian Groag

ANTAEUS BOARD OF DIRECTORS

David Gindler, Chair
Rhonda Aldrich
Jamie Anderson
Sonja Berggren
Stuart Berton
Charlie Bohlen
Bill Brochtrup
Anne Gee Byrd
Bob Craft
Dawn Didawick
Harry Groener
Paula Holt
Susan Boyd Joyce
Mary Lambert
Melinda Eades LeMoine
Rob Nagle
Claudette Nevins
Ana Rose O'Halloran
John Prosky
Laura Seigle
Armin Shimerman
John Sloan
Elizabeth Swain
Kitty Swink
Reba Thomas
Peter Van Norden
Jack Walker
Jonathan Weedman