

High-Flying Comedy

'Misalliance' brings crashing fun to A Noise Within Theatre

By Hayden Dobb
Pasadena Weekly Staff Writer

In an eruptive, wild comedy, George Bernard Shaw's "Misalliance" brings to the stage the unwinding story of eight proposals and a plane crash all set within one afternoon. Directed by Guillermo Cienfuegos, this chaotic and clashing theatrical experience will run from May 18 to June 9 at A Noise Within Theatre.

Set after the Victorian era in Edwardian England, John Tarleton and his wife, with their seemingly proper daughter Hypatia, are prepared to cement the family's entrance to Edwardian aristocracy with her upcoming marriage to Bentley, the son of Lord Summerhays. The unexpected arrival of guests, however, shifts the plot drastically. The audience may first assume how the characters will behave, but with Shaw's twist, chaos ensues.

"Shaw's writing and the way he has cre-

ated his characters really shows his strengths," Cienfuegos said. "We're hoping that the audience will come in and think they're seeing a quaint, British play from over 100 years ago — but as soon as it begins, they'll see it's so much different than what expectations are set."

The "Misalliance" cast includes Peter Van Norden, playing John Tarleton; Deborah Strang as Mrs. Tarleton; Erika Soto, playing Hypatia; Josey Montana McCoy, playing Bentley; Frederick Stuart as Lord Summerhays; Riley Shanahan playing Hypatia's brother, Johnny; and Trisha Miller, Dan Lin and Joshua Bitton swooping in as the uninvited guests.

The creative minds behind "Misalliance" include composer and sound designer Christopher Moscatiello, costume designer Christine Cover Ferro, scenic designer Angela Balogh Calin, wig and makeup designer Tony Valdés, lighting

designer Ken Booth, dialect coach Andrea Odinov, prop designer Stephen Taylor, and dramaturg Dr. Miranda Johnson-Haddad. The assistant director of "Misalliance" is Rachel Berney-Needleman, with Angela Sonner as production stage manager, assisted by Hope Matthews.

"'Misalliance,' even if it was written by Shaw around 1908, it's still so relevant today," Cienfuegos said. "It has this really compelling energy to it. It's subversive, energetic, surprising and funny. For the time it was written, this play is so impressive in the way that it covers so many of the topics we still talk about today, like gender, marriage, equality, class status, subjugation of women — we all deal with all of these things. Shaw has been ahead of the curve with this and is finding ways where his writing is still a part of the narrative and keeps fresh."

Every Friday from the start of the "Misalliance" performance, also including the Sunday, May 26 event, there will be post-performance conversations with the artists. On Thursday, May 16, at 10:30 a.m., a student matinee will also be available.

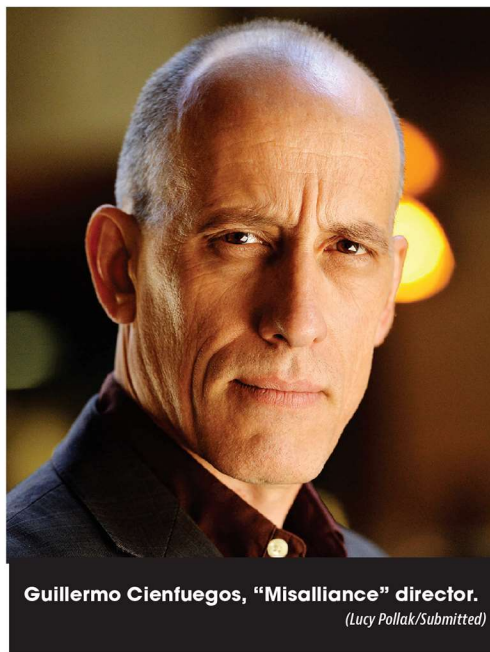
To catch performances of "Misalliance" at A Noise Within, the play will be performed May 18 to June 9 on Thursdays at 7:30 p.m., Fridays at 8 p.m., Saturdays at 2 p.m. and 8 p.m., and Sundays at 2 p.m.

"As with anything done by A Noise Within, you can always count on a really strong performance," Cienfuegos said. "If there are people planning on coming out



Trisha Miller as Polish acrobat and pilot Lina Szczepanowska in George Bernard Shaw's wild and subversive "Misalliance".

(Daniel Reichert/Submitted)



Guillermo Cienfuegos, "Misalliance" director.

(Lucy Pollak/Submitted)

to see 'Misalliance' who aren't already familiar with Shaw's writing, they're in for a real treat. The play is sharp and clever, and our ensemble of actors are at the top of their game."

Tickets are available at anoisewithin.org, with prices starting at \$29, with student discounts for \$18, and a pay-what-you-choose performance on Thursday, May 23, starting at \$10 per ticket. ■

"Misalliance"

WHEN: May 18 to June 9, times vary

WHERE: A Noise Within Theatre, 3352 E. Foothill Boulevard, Pasadena

COST: \$29-\$82.50, \$18 for students

INFO: anoisewithin.org