

SHE



By **Marlow Wyatt**
Directed by **Andi Chapman**

OCT 15 - NOV 20, 2023

ANTAEUS
Theatre Company

Antaeus Leadership Note



Photo by Frank Ishman

On behalf of all of us at Antaeus Theatre Company, welcome to the first show of our 2023/24 Season! Whether it's your first time here at the Kiki & David Gindler Performing Arts Center or you're an ardent supporter, subscriber or donor, thank you for being here.

As a theater company committed to the classical canon, we're always exploring and defining what that means, and we actively look for the next generation of playwrights and the "future classics" that they create – language-based plays that ask timely and timeless questions about the human condition.

We first heard Marlow Wyatt's *SHE in Lab Results*, a series of play readings featuring material that was developed in the Antaeus Playwrights Lab. We knew immediately that it was a story we wanted to produce on our stage, and we knew that Marlow was a writer whose unique, lyrical voice was one we wanted to celebrate.

Marlow became one of our first commissioned playwrights, along with writers Alex Alphaaraoh, Zola Dee, and Lisa Sanaye Dring. Each has received a NEXT Commission, Antaeus's way of ensuring that historically underrepresented voices receive financial, dramaturgical, and logistical support so they can concentrate on creating great works of art for the stage. Through the NEXT Commission program, Antaeus has helped support the writing of Marlow's next play, *The Things We Leave Behind*.

We're not the only ones impressed by Marlow's talent – this play and production are recipients of a generous grant from the LA New Play Project, to whom we are very grateful. The script was also a CTG/HUMANITAS finalist, Long Beach Playhouse New Works winner, and received a National Black Theatre Festival A-List reading. We are also extremely grateful to the Michael J. Connell Foundation for sponsoring our production of *SHE*.

And we're thrilled to welcome back director Andi Chapman, whose work you may well remember from her stunning productions with us of *Native Son* and *The Abuelas*. It's always a joy to have Andi leading our team, and we couldn't imagine *SHE* without her.

Our season will continue next with Shakespeare's epic romance, *The Winter's Tale*, a story that explores the question, "How do you forgive the unforgivable?" The spring will bring us a streamlined and very human look at a marriage in crisis in Ingmar Bergman's adaptation of Ibsen's *A Doll's*

House, retitled *Nora*. And this summer, we welcome you to join us for a “trivial comedy for serious people,” Oscar Wilde’s *The Importance of Being Earnest*.

We couldn’t be more excited to share this wide assortment of cultural treasures with you! We believe theater is vital and carries within it the power to transform, stimulate, challenge, and inspire.

Thank you for joining us!

Cheers,



Bill Brochtrup
Artistic Director



Ana Rose O’Halloran
Producing Executive Director

Land Acknowledgement

Antaeus Theatre Company acknowledges the Gabrielino-Tongva peoples as the traditional caretakers of the land in the Los Angeles basin where Antaeus is located. We pay our respect to the Ancestors, Elders, and Relations – past, present, and emerging.

Antaeus Theatre Company Presents

SHE

By Marlow Wyatt

Directed by Andi Chapman

Scenic Designer

Eli Sherlock

Lighting Designer

Andrew Schmedake

Projections Designer

Nicholas Santiago

Production Stage Manager

Camella Coopilton

Costume Designer

Wendell C. Carmichael

Sound Designer

Jeff Gardner**

Props Designer

Katie Iannitello

Assistant Director

Jessica E. Williams

Assistant Stage Manager

Jessica Osorio

PRODUCTION GENEROUSLY SPONSORED IN PART BY:

LA New Play Project

The Michael J. Connell Foundation

Ensemble

Lorenz Arnell, Jon Chaffin, Gerard Joseph*, Camille Ariana Spirlin,
Veronica Thompson, Karen Malina White*



**Member, Actors' Equity Association, the union of professional Actors and Stage Managers in the United States. This production is presented under the auspices of the Actors' Equity Los Angeles Membership Company Rule.*



The Director and Choreographer are members of the **STAGE DIRECTORS AND CHOREOGRAPHERS SOCIETY**, a national theatrical labor union.



The Designers at this Theatre are represented by **United Scenic Artists - Local USA 820** of the International Alliance of Theatrical Stage Employees

**

The video and/or audio recording of this performance by any means whatsoever is strictly prohibited.

Director's Note

*SHE,
In the dark,
found light
Brighter than many ever see.*

*SHE,
Within herself,
Found loveliness,
Through the soul's Mastery.
And now the world receives
From her dower
The message of the strength
Of inner power*

-Langston Hughes

No more to be said... FLY!

Andi Chapman, Director *SHE*

SHE

Cast of Characters

DAVIE MANSAW Lorenz Arnell

MR. LONNIE Jon Chaffin

OTHALEE Gerard Joseph

SHE SOJOURNER FREEMAN Camille Ariana Spirlin

MISS JANE Veronica Thompson

BERNICE ROSE JOHNSON Karen Malina White

Special Thanks

The Fountain Theatre

Kevin Williams

The Antaeus Playwrights Lab, and all the artists who helped bring this play to life throughout its development process

Special Thanks From the Playwright

Sophina Brown of Support Black Theatre for championing my work and connecting me with Andi. **Andi Chapman** for elevating *SHE* with your magic of storytelling. Aaron Henne and Dylan Southard. Robey Theatre Company Playwrights Lab where it all began and my fellow playwrights from Antaeus' Playwrights Lab who helped me make *SHE* better. Nate Edelman, Crayton Robey and Mattie Singleton. Bruce Hall, Joseph Selway and Joe Howells - you know why. Wendell Carmichael for hanging in there and the entire cast and production team for *SHE*. Words cannot express enough my gratitude. I respect your craft, your artistry; you make *SHE* look good. Ana Rose and Bill - for producing an unknown playwright. My family in Kansas - there truly is no place like home. To all the actors and audiences who participated in the countless readings of *SHE* over the years - you inspire me. *SHE* is for you!

ENSEMBLE - *SHE*



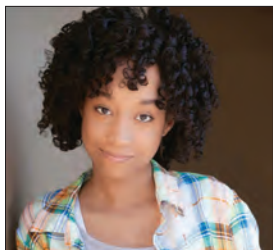
Lorenz Arnell



Jon Chaffin



Gerard Joseph



Camille Ariana Spirlin



Veronica Thompson



Karen Malina White

CAST

LORENZ ARNELL (DAVIE MANSAW):

Lorenz Arnell is an actor, dancer, music producer and singer. He is a multi-award-winning actor who has had the chance to work in some of the most respected theaters in Los Angeles including: The Pasadena Playhouse, Geffen Playhouse, Road Theater, Santa Monica Playhouse, The Fountain Theater and more. Lorenz has had the opportunity to do print work for Adidas and Guess to name a few. He has also worked on shows such as *Lethal Weapon*, *Preacher*, *iCarly*, *Everybody Hates Chris* and Nickelodeon's *Figure it Out*. He also starred in the films *Underdog Kids*, *Smoke Filled Lungs* and *Kings* starring Halle Berry and Daniel Craig. Although he enjoys doing commercials, television and film, he found that his love is still the live theater stage. Lorenz's passion for the arts drives him daily and he hopes to soar to even greater heights.

JON CHAFFIN (MR. LONNIE):

is excited to be returning to ANTAEUS, where he previously led the cast of the critically-acclaimed production, *Native Son*. Other Theater: *Two Trains Running* and *King Hedley II* (Matrix Theatre); *American Saga: Gunshot Medley - Part 1* (Rogue Machine); *The Dumb Waiter* (PushPush Theater). TV/Film: *Perry Mason*, *BMF*, *DIARRA From Detroit*, *Quantum Leap*, *S.W.A.T.*, *Lucifer*, *Snowfall*, *Hawaii Five-O*, *Blindspotting*, *If Not Now*, *When?*, *96 Minutes*. Jon received his B.A. from Fort Valley State University. He is also a member of Phi Beta Sigma Fraternity, Inc.

GERARD JOSEPH (OTHALEE): is a multi-hyphenate artist currently based out of LA. He received his M.F.A. from UCSD, has trained with Maggie Flanigan in NYC, and is a company member at ANTAEUS and The Road Theater.

Gerard sends special love and thanks to his parents for their tremendous love and support. IG @whatnextg. Reps welcome. At ANTAEUS: *Everybody* and *The Zip Code Plays*. Other LA Theater: *First Deep Breath* (Geffen Playhouse), *Kairos* (Geffen Playhouse); *Present Black Fathers* (Road Theater Company); *A Post-Racial USA* (Highways Theater); *Taste of Honey* (Odyssey Theater). Other Theater: Manhattan Theater Club, Cherry Lane Theater, San Diego Rep, La Jolla Playhouse, Ubuntu Theater Co, Flashpoint Theater Company, Walnut Street Theater, Plays and Players. As Director: *Robbin*, *From the Hood* (Road Theater Company); *Topdog/Underdog* (Black Creators Collective); *YOU* - an immersive experience; *Secret Society* (Alliance Theater).

CAMILLE ARIANA SPIRLIN (SHE SOJOURNER FREEMAN):

is a Pasadena-born, Compton-raised Actress. Adopted at 18 months, Camille's family discovered her liking for the stage and television. As an actress, she appeared as a series regular in Nickelodeon's *Marvin Marvin*, a recurring role on the Fox TV series *Rosewood*, ABC's web series *American Koko*, and guest-starred on *Grey's Anatomy*. Camille made her theater debut at the Fountain Theatre in *Runaway Home* directed by Shirley Jo Finney, playwright Jeremy J. Kamps. Coming from foster care to live with a

loving family, acting became Camille's coping mechanism. An imaginary world from reality. When she found her biological family years later, acting didn't fall far from the tree. "It's truly a blessing to follow my dreams and make my family proud. I hope to inspire DCFS children and aged out youth. In the arts, it's your story to tell, and the actors' job to bring it to life."

VERONICA THOMPSON (MISS JANE):

is a proud 30-year member of Towne Street Theatre, LA's Premiere African American Theatre Company. A native of Brooklyn, N.Y., she is also an Acting coach and received a M.F.A. in Acting from New York University Tisch School of the Arts. She is a four-time NAACP Theatre Award nominee and was last seen in the Hollywood Fringe Festival '22 portraying the role of Connie in *Dismissed* written and directed by Carol Becker. It is an honor to be an active and longtime member of such a prestigious theater under the direction of such distinguished directors like Nancy Davis-Bellamy, Nancy Renee, and Sy Richardson. *Summers In Suffolk* as Maddie and Mama Cleo, *The Phonograph* as Ellie, and *Southern Girls* as Naomi are among the numerous theatrical roles she has portrayed. Her numerous directing credits include: *The Daughters of The KUSH* by George Corbin, *War Babies* by Madeline Puccioni, *5 Women In The Same Dress* by Alan Ball. Aside from her artistic endeavors, she holds a California State administrative credential and was a retired Stem and Creative Arts Magnet Coordinator for LA Unified School District.

KAREN MALINA WHITE (BERNICE

ROSE JOHNSON): At ANTAEUS: *You Can't Take It With You, The Liar, The Wedding Band, As You Like It and Eight Nights*. Other Theater: *The Ballad of Emmett Till* (LA Drama Critics Circle Award, LA Ovation Award), *Citizen, Runaway Home* (The Fountain Theatre); *The Mountaintop* (Tour), *Hedda Gabler, Little Foxes, Behind The Sheet, Pipeline* (LATW); *The Old Settler* (NAACP nomination - International City Theatre); the world premiere of *In the Valley of the Shadow* (Rogue Machine); originated the role of Ernestine in the West Coast premiere of *Crumbs From the Table of Joy* by Lynn Nottage (NAACP Image Award - South Coast Rep); *Permanent Collection, Salt Fish N' Bakes, Distracted* (Mixed Blood Theatre). TV: Netflix's *DAHMER*, Hallmark's *Tis' The Season to be Merry*, and *Love For Real, BRUH, Mom, Cherish The Day, Lodge 49, Raven's Home, Kidding, Shameless, Snowfall, Animal Kingdom, How to Get Away with Murder, Veep, Mike and Molly, The Mentalist, A Different World, Malcom n Eddie, The Cosby Show*, AND her highly recognizable voice is featured on *The Proud Family: Louder and Prouder* on Disney Plus as the character of Dijonay.

PRODUCTION

MARLOW WYATT (PLAYWRIGHT):

is a playwright and actor. She received her B.F.A. (magna cum laude) from Howard University College of Fine Arts. She is a 2022/23 LA New Play Project grant recipient, a 2022 Lower Depth Commission Fellow, 2022 AGE Legacy Grant recipient, ANTAEUS 2021 NEXT Commission Artist, Support Black Theatre's 2021 As We Grow We Sow Awardee, 2021 SBT New Works Pipeline Artist, 2016 Long Beach Playhouse New Works winner and a CTG/Humanitas Playwrights Prize finalist. Selected works include: *Robbin, from the Hood* (2024 Road Theatre World Premiere, Eugene O'Neill semi-finalist); *Listen, A Black Woman Is Speaking* (2023 Common Crow Theatre/Dublin, Ireland, Third Rail Repertory, CoHo Theatre readings, 2022 Plays In Motion Moving Arts workshop); *Red Ribbons* (2022 Voices for Victory Reading Series, 2021 Headwaters New Play finalist); *Bread and Circus* (2023 No Noise Reading Series - A Noise Within/Lower Depth Theatre Co. Cycle of Poverty Fellowship); and *The Things We Leave Behind* (NEXT Commission/ANTAEUS). For more information visit marlowwyatt.com or follow her on IG @marlowwrites.

ANDI CHAPMAN (DIRECTOR):

Born in New York City, Ms. Chapman is an Director Actor, Educator. She is the Associate Artistic Director of The Ebony Repertory Theatre. Her Directing credits include: Theatre: Toni Morrison's *The Bluest Eye* at A Noise Within Theatre. The Critically Acclaimed *Native Son* ANTAEUS & Kirk Douglas Theatre,

Garnering Best Director nominations (Stage Raw & Broadway World). Ebony Repertory Theatre's *The Gospel at Colonus* which garnered 14 Ovation Nominations including Best Play & Best Play Direction and won NAACP Theatre Awards 2016 Best Production. Others include: *The Abuelas, The Winter's Tale, Mockingbird, As it is in Heaven, The Ninth Wave, The Actor's Co-op Steel Magnolias*, for which she garnered a Best Director Award, *The Dutchman, A Summer Memory*, and a host of others. Film: The award winning short films *Memorial Street, Elijah's Song, and Why?* As an Actress her Television, film, stage credits include: recurring on shows like *911, The Orville, HTGAWM, Criminal Minds, NCIS, SMLF, Shameless, Glee, Dexter, 24, Six Feet Under, Short Cuts. The Lower Depths, Blood Wedding*. She is currently the Center Theatre Group Program Advisor/Coaching artist for the August Wilson National Monologue Competition. An Adjunct Professor of various universities (Pepperdine, Chapman) she is currently teaching Theatre/Film Acting at Azusa Pacific University. Ms. Chapman is a graduate of the New York High School for the Performing Arts. B.F.A. - The City College of New York's Davis Center for the Performing Arts. M.F.A. - The Yale School of Drama. An alumna of The American Film Institute's Directing Workshop for Women. Andi is also a selected participant of the prestigious Lincoln Center Directors Lab.

BILL BROCHTRUP (ARTISTIC

DIRECTOR): At ANTAEUS: *Cloud 9, Mrs. Warren's Profession, Peace In Our Time, The Malcontent, Cousin Bette,*

Tonight at 8:30, Pera Palas. Other local Theaters: Geffen Playhouse, South Coast Repertory, Ensemble Theatre Company, Pasadena Playhouse, The Fountain Theatre, Boston Court Pasadena, Rogue Machine Theatre, L.A. Theatre Works. Film: *Life as We Know It, He's Just Not That into You, Ravenous, Hypnotized.* TV series regular: "John Irvin" on *NYPD Blue, Public Morals, Total Security.* TV recurring: "Dr. Joe" on *Major Crimes, Shameless, After Forever.* billbrochtrup.com

**ANA ROSE O'HALLORAN
(PRODUCING EXECUTIVE**

DIRECTOR): Ana Rose joined ANTAEUS in 2015 and has produced over 20 productions during her tenure. Previously, she served as the Senior Director at The Pablove Foundation, and in various roles in the development department at Center Theatre Group. She received her M.F.A. in Theatre Management from California State University, Long Beach, and a B.F.A. in Theatre Management and a B.F.A. in Performance from Ohio University.

ELI SHERLOCK (SCENIC DESIGNER):

Eli (he/him/his) is thrilled to be making his debut at ANTAEUS with this incredible team to tell this beautiful story. He has designed with The 5th Avenue Theater, Flint Repertory Theater, Theater Latté Da, Artistry, History Theater, Park Square Theater, 7th House Theater, Yellow Tree Theater, and Walking Shadow Theater Company, among others. He has worked as an associate/assistant at the Public Theater, Center Theater Group, The Old Globe, The New Group, Asolo Repertory Theater, Artists Repertory Theater, and The Oregon Shakespeare Festival. He

received an M.F.A. from UCLA, and a B.F.A. from the University of Michigan. He is currently a lecturer at UCLA in the Department of Theater and Drama. elisherlock.com

WENDELL C. CARMICHAEL

(COSTUME DESIGNER): Wendell (he/him) is an LA-based Costume Designer/educator with previous design credits at Center Theatre Group (Mark Taper Forum and Kirk Douglas), Laguna Playhouse, A Noise Within, Geffen Playhouse, Ebony Repertory Theatre Company, Collaborative Artist Bloc, Lobby Theatre, ANTAEUS, Boston Court Theatre, Kansas City Repertory Theatre, Rogue Machine, Matrix Theatre, Southcoast Repertory Theatre, La Mirada Theatre, Warehouse Theatre, Skylight Theatre Company, Lower Depth Theatre, Chance Theater Company, and others. University and Colleges: APU, USC, UCLA, University of Pomona, Chapman College and University of La Verne Productions: Three time LA Critic's Choice nominee, 2018 Stage Raw winner - Costume Design. Three-time L.A. Ovation Award nominee. 2017 Orange County's Best Costume Designs. 2015 NAACP Theatre Award winner. Member of Local 768. His work can be viewed on social media @WynningzbyWyndell.

ANDREW SCHMEDAKE (LIGHTING DESIGNER):

Andrew (he/him/his) is an award-winning lighting designer and technical director for the arts and live entertainment. Previously with ANTAEUS: *Native Son* and *The Abuelas*. Recent credits include designs for A Noise Within, Center Theatre Group, South Coast Repertory, Boston Court and Rubicon Theatre Company. Awards:

Three-time LA Stage Alliance Ovation Award. Two-time LA Drama Critics Circle Award. NAACP Theatre Award. Education: M.F.A. from Carnegie Mellon University.

JEFF GARDNER (SOUND DESIGNER):

Jeff is an award-winning sound designer, foley artist and actor. Jeff has designed and performed throughout the country. At ANTAEUS: *The Tempest*, *The Zip Code Radio Plays*, *Eight Nights*, *The Abuelas*, *Native Son*, *The Caucasian Chalk Circle*, *Diana of Dobson's*, *The Cripple of Inishmaan*, *The Little Foxes*, *The Hothouse*, *Cat on a Hot Tin Roof*, *Top Girls*, *Picnic*, *Wedding Band*, *The Crucible*, *The Seagull*. Other Theaters: Denver Center for the Performing Arts, Williamstown Theatre Festival, Cleveland Playhouse, Baltimore Center Stage, The Shakespeare Theatre (DC), Arena Stage, The Kennedy Center, Edinburgh Festival Fringe, Mark Taper Forum, Geffen Playhouse, The Kirk Douglas Theatre, The Wallis Annenberg Center, Pasadena Playhouse, A Noise Within, Boston Court Pasadena, Circle X Theatre, Echo Theater, IAMA Theatre, Rogue Machine, Skylight Theatre. Los Angeles Stage Alliance Ovation Awards, Stage Raw and LA Drama Critics Circle Award Winner. Jeff can be seen at L.A. Theatre Works where he regularly performs live sound effects. Jeffthomasgardner.net

NICHOLAS SANTIAGO (PROJECTION DESIGNER):

has worked for numerous universities and theater companies around Los Angeles including the Pasadena Playhouse (*Ham*), Skylight Theatre (*Church & State*, *Obama Ology*), Rogue Machine (*A Permanent Image*), USC (*Trojan Women*, *On the Town*), The

Chance Theatre (*Big Fish*, *American Idiot*), The Road Theatre (*Nowhere on the Border*, *A Delicate Ship*), LA LGBT Center (*The Search for Signs of Intelligent Life Revisited*, *Menstruation*), and the Fountain Theatre (*Arrival & Departure*, *The Cost of Living*). He has received numerous awards including a LA Drama Critic's Circle award for his work on Rogue Machine's *A Permanent Image*, an Ovation Award win for his work on The Fountain Theatre's production of *The Cost of Living*, and an OCTG and Stage Raw Award for his production of *American Idiot* at The Chance Theatre. nsantiagodesign.com

KATIE IANNITELLO (PROPS DESIGNER):

Katie is happy to be back at ANTAEUS! She began her creative journey with a degree in theater design, followed by countless jobs in interior design, home renovation, props and set design. Katie is excited to share the final form of *SHE* as she is proud of the design! Break a leg everyone!

CAMELLA COOPILTON

(PRODUCTION STAGE MANAGER):

(formally Cooper) dedicates this show to her grandmother Addie Pearl Brown Clark (1934- 2022).

JESSICA E. WILLIAMS (ASSISTANT DIRECTOR):

is a director and assistant director for theater. She is a collaborative storytelling artist and multi-hyphenate who acts, writes, and produces theater, short film, and hybrid events. Her directing credits include: *Really Really* (The Lee Strasberg Theatre & Film Institute), *Mine for The Taking* Staged Reading (WACO Theater & Willie Agee Playhouse presented by

Black Creators Collective), *Concrete Rose* - Director's Showcase for Black Creators Collective (Willie Agee Playhouse), and her first short film *My C.R.I.T.I.C.* Her assistant directing credits include: *The Bluest Eye* (A Noise Within), *An Unseasonable Fall of Snow* (Hollywood Fringe Festival 2022), *Both And...* (Boston Court Pasadena), *The Abuelas* (ANTAEUS) and *Native Son* (ANTAEUS & Block Party 2019 - Kirk Douglas Theatre), and *The Gospel at Colonus* (The Ebony Repertory Theatre). Jessica holds degrees from Full Sail University in Entertainment Business (M.S) and The University of Southern California's School of Dramatic Arts in Acting (B.F.A.). She has also worked in production for such hit shows as: *Twenties* (BET), *Grownish* (Freeform), and *How to Get Away with Murder* (ABC). She is excited to return to ANTAEUS for the World Premiere of *SHE* and is always grateful to assistant direct under the great Andi Chapman.

ADAM MEYER (TECHNICAL

DIRECTOR): Adam has been hanging around the ANTAEUS buildings since 2004. He took over as Production Manager in 2011 and oversaw every production prior to his departure in 2022. Now, he's BACK! Adam is also a company member and has acted in numerous plays and readings at ANTAEUS. He credits a lot of his success to this warm and loving theater company. But he would be nothing without the support and love from his family, wife Rebecca, and two sons, Leo and Golden.

JESSICA OSORIO (ASSISTANT STAGE

MANAGER): At ANTAEUS: *As You Like It, Les Liaisons Dangereuses, The*

Hothouse, Native Son, Three Days in The Country, The Cripple of Inishmaan, The Little Foxes, Diana of Dobson's, The Caucasian Chalk Circle, Hamlet, Everybody, Love & Information. Other Credits: *If All The Sky Were Paper* (Kirk Douglas Theatre), *The First Deep Breath* (Geffen Playhouse). Training: AMDA LA - B.F.A. Cheers to everyone involved with bringing this play to life. Enjoy the magic!



Anne Gee Byrd and Dawn Didawick in Everybody (2022), Photo by Jenny Graham.

Support Antaeus Today!

As a nonprofit organization, we rely on contributions for the majority of our income. Everything we do is made possible by the extraordinary generosity of this community! Donations support our productions, digital programming, reading series, subsidized ticket program, arts education, and so much more.

***Visit antaeus.org/support-us
to join our community of supporters today!***

If you'd like to make a pledge, arrange a recurring gift, or inform us about a planned gift, please contact Producing Executive Director, Ana Rose O'Halloran, at anarose@antaeus.org or 818.506.5436.

Thank You to our Extended Family
of Loyal Supporters

CORPORATE SPONSORSHIP

Join other business leaders by supporting Antaeus Theatre Company's award-winning programming through sponsorship and matching gift programs.

Corporate Sponsors

Amazon Associates

Chevron

Comcast NBC Universal

Deutsche Bank Americas Foundation

The Kroger Co. Foundation

Netflix

Pasadena International Film Festival

Paul Hastings LLP

The Walt Disney Company Foundation

*Based on donations made between 9/1/22-9/30/23
+ Indicates monthly sustaining donor*

PRODUCER'S CIRCLE

The Producer's Circle ensures we are never limited in our artistic pursuits on our stage. This group believes in sustained excellence and allows Antaeus to produce plays no matter the cast size or production needs.

\$50,000+

Kiki & David Gindler
The Ahmanson Foundation
Los Angeles County Department of Arts and Culture
Perenchio Foundation
State of California

\$25,000+

Sonja Berggren & Patrick Seaver
In Honor of Channing Chase with support from Daniel Saxon
The Michael J. Connell Foundation
The David Lee Foundation
The Ralph M. Parsons Foundation
The Shubert Foundation

\$15,000+

California Arts Council
Rosemary A. Hernandez
Los Angeles New Play Project
National Endowment for the Arts
Jocelyn Towne & Simon Helberg

*Based on donations made between 9/1/22-9/30/23
+ Indicates monthly sustaining donor*

DIRECTOR'S CIRCLE

The Director's Circle is a distinguished group of theater lovers who provide general operating support to Antaeus. In recognition of this support, they receive invitations to special events with Antaeus' artists.

\$10,000+

The Green Foundation
Scott Fraser & Cathy Jurca
Debra Thompson & Lawrence Riff

\$5,000+

Bill Brochtrup
Evie & John DiCiaccio
J Robin Groves+
Mary Lambert
Suzy Moser
Molly Munger & Steve English
Anthony J. Oncidi
Melinda Peterson & Philip Proctor+
Amy Proctor & Lloyd Roberson II
Dan Putman
Jaye Scholl & Charlie Bohlen+
Laura A. Seigle
Joan Pirkle Smith & Kurtwood Smith
Arlene Vidor
Mary Jo & David Volk
Belinda & Jack Walker
April Webster

*Based on donations made between 9/1/22-9/30/23
+ Indicates monthly sustaining donor*

DIRECTOR'S CIRCLE

The Director's Circle is a distinguished group of theater lovers who provide general operating support to Antaeus. In recognition of this support, they receive invitations to special events with Antaeus' artists.

\$2,500+

Tony Shaloub & Brooke Adams
Steven Warheit & Jean Christensen
Michael Morrell
Richard Nathan+
Cara Robertson
Jennifer & Matthew Rowland
R. Scott Thompson

\$1,500+

Amy Aquino & Drew McCoy
F. K. Conner Baldwin
Anne Gee Byrd
Loraine Despres & Carleton Eastlake
Dawn Didawick & Harry Groener+
Jeanie Fiskin
Matthew Goldsby
Paul M Holmes+
Susan & Robert Long
Kitty McNamee & Paul Lazarus
Ana Rose & Grant O'Halloran+
Michael R. Oppenheim
Gwynne & Robert Pine+
Peter & Wendy Van Norden
Willow Cabin Productions
Patty Woo & Steve Poretzky

*Based on donations made between 9/1/22-9/30/23
+ Indicates monthly sustaining donor*

STAGE CREW

The Stage Crew community of donors support the production of great plays,
innovative arts education outreach, and the training of the next generation of actors.

\$1,000+

Kathy Baker & Steve Robman
The Caplin Foundation
Paul Eiding
Anonymous
Patricia & Richard Hughes
Kahn Education Foundation
Jack & Maureen Kolosky
Melinda & Robert LeMoine

Dakin Matthews & Anne McNaughton
Bruce & Valerie Merritt
Dan Oliverio+
Robert Ronus
Ned Schmidtke+
Reba & Geoffrey Thomas
Larry Title & Ellen Shavelson

\$500+

Robert C. Anderson
Joni & Miles Benickes
Bill Butler+
Chancy Memorial Foundation
Drs. Marjorie Marks Fond & Richard Z.
Fond
Stephanie & Dennis Cohen
Felicia Davis & Eric Gutshall
Paula Devine
Kathleen & James Drummy
Barbara Durham+
Dr. Jerome Hunt & Alvin Ford Jr.
Leslie & Robert Gordon+
Anonymous
Melanie & James Hayes+
Mark & Janice Kaspersen
Bill & Priscilla Kennedy

Daniel Castellaneta & Deborah Lacusta
Elaine Lockhart-Mummery
Philip McKinley
Myron Meisel
The Millikan Family+
Selwyn & Laura Oskowitz
Timothy & Jeanne Sakata Patterson
Ellen K. Rentz
Gregory Shapton & Barbara Rugeley
George & Carolyn Seitz
Liza Seneca
Kitty Swink & Armin Shimerman
Drs. Ligia & William Toutant
Jill Maglione & Paul Van Dorpe
Tyree & Les Wieder
Richard Yaffe

\$100+

Kathleen Ross-Allee &
John Allee
Heather Allyn & Rob Nagle+
Polly & Jamie Anderson
Andrew R. DeMar Family
Foundation
Joan Borgman &
John Apicella+
Annet Arakelian
Mary & Perry Bankston
Gigi Bermingham

Ron, Elayne, Krysten Bittner
and Chris Ruiz
Amy Borgman &
Michael Fiorillo
Eileen Boyd
Mark Bramhall
Kaite Brandt+
Marie Pal-Brown &
Garrett M Brown
In Memory of Melinda
Peterson

Mary Casey
Karen Chiella+
Jacqueline Chooljian
Nanci Christopher
James Cloer
Kathy Connell &
Daryl Anderson
Karen Constine
Jake & Leslie Crabtree
Sondra Currie & Alan J. Levi
Diana Daves &
John McLaughlin

*Based on donations made between 9/1/22-9/30/23
+ Indicates monthly sustaining donor*

Anonymous	David & Denise Kautter	Marilyn Plutae
Pete & Julie Gutman Dickinson	Dr. Kristine Penner Klein & Steven Klein	Deborah Podus
Michael Dorn	Marshall F. Kramer	Patricia Poet
Ken Eddings	Emily Kuroda & Alberto Isaac	Anna Quirino-Miranda
Merle Edmondson	Bonnie & Jim Lambert	Gustavo Herrera & Cristina Ramirez
Marni Farmer	Lanzafame Family Trust+	Deborah Reed
Jeanette & Warren Harkins	Howard & Patrick Leder- Morrow	Rich Reinhart
Anonymous	Steven Llanusa	Stephen & Melanie Rockwell
Shari & Richard Foes	Victor & Anna Luke	Bianca & Lance Rucker
In Memory - Melinda Peterson	Robert Machray	Christine Sanders
James Freed	Kipp Marcus	John Schuning & Gregory Ross+
Rob Friedman	Abigail Marks+	Ruth & David Seigle
Bill Frischman	Jeffrey Gale & Julane Marx	Steven Seliger
Barbara & Frederick Gable	Tony Amendola & Judith Marx	Cordelia & Sidney Sherland
Olga Garay-English+	Anna Mathias	John & Judy Sherman
Joshua Gitelson	Patricia Mayer	Kitty Swink & Armin Shimerman
Carlotta Glackin	Tulis McCall	Jeremy Shouldis
Kevin Goetz	In honor of Jack and Belinda Walker and Family	Stephanie Shroyer
Alexandra Goodman	Nan McNamara & Lindsay Schnebly	John & Juliana Sloan+
Susan Gosden	Desirée Mee Jung & Brandon Kruhm	Margaret & David Sloan
Howard Gradet	Marlene F. Mills	Adam J Smith
Gretchen & Dick Grant	Kerry Mohnike+	Peter James Smith
Geoff Griffith	In Memory of Melinda Peterson	Christopher John Smith
Craig Grilley	Arianne Neumark	Devon Sorvari & Steven Brand
Allen Grogan	Allen Newcomb	Patricia & Lawrence Sparks
Michael Barker & Heidi Hanson+	Nancy Niederman	Zane Stanley
William & Bernhild Heckmann	Devon O'Brien+	Nadya Starr
Beverly Higginson	Dan O'Connor & Edi Patterson-O'Connor	Sheila & John Suarez
Shannon Holt	Gregg & Debbie Oppenheimer in Memory of Melinda Peterson	James Sutorius
Katie Hotchkiss+	Jeff Padden	Elizabeth Swain
Merrilee & Marty Howard	In memory of Melinda Peterson	Elizabeth & Steven Swink
Carol Howell	Steven & Susan Peterman	Skip Torvinen
Kevin Hudnell	Anonymous	Dale E. Turner
Cynthia Huffman	Penny Peyser & Doug McIntyre	Connie & Ivan Vance
Sheila & Milton Hyman Foundation	Lionel Pina	E. J. von Schoff
John Iacovelli		Laurie & Stanley Whitcomb
Tom Jacobson & Ramone Muñoz		Bernard White
Jay Jee		Pat & Paul Willson
Anonymous		Anonymous
Bjorn Johnson		Anonymous
Peter & Dixie Johnson		In Memory of Melinda Peterson
Alice & Sam Johnston+		
Anonymous		

*Based on donations made between 9/1/22-9/30/23
+ Indicates monthly sustaining donor*

STAFF

PRODUCING EXECUTIVE DIRECTOR

Ana Rose O'Halloran

ARTISTIC DIRECTOR

Bill Brochtrup

EXECUTIVE ASSISTANT

Courtney Agustin

TECHNICAL DIRECTOR

Adam Meyer

BOOKKEEPER

Amy Michner

OPERATIONS MANAGER

Kristin Weber

MARKETING & COMMUNICATIONS INTERN

Siena Pinsker

PUBLICIST

Lucy Pollak

BOARD OF DIRECTORS

Evie DiCiaccio, Chair

Laura Seigle, Treasurer

Debra Thompson, Secretary

Bill Brochtrup

Dawn Didawick

Kiki Ramos Gindler

Ana Rose O'Halloran

Ara Oshagan

Clarissa Park

Lloyd Roberson II

Reba Thomas

Arlene Vidor

April Webster

BOARD EMERITUS

Stuart Berton

Bob Craft

David Gindler

Mary Lambert

Jack Walker

PRODUCTION & FRONT OF HOUSE

ASSOCIATE LIGHTING DESIGNER

Gary Gifford

LEAD SCENIC PAINTER

Orlando de la Paz

SCENIC PAINTER

Marygold Martinez

MASTER ELECTRICIAN

Kai Hirota Magee

COSTUME ASSISTANT

Jessica Osorio

CONSTRUCTION

Nic Dagraca, Aaron Lyons,

Adam Meyer

ELECTRICIANS

Kelsey Araghi, Ryan Baker,

Joshua Collins, Cameron Knowles,

Scott Kriloff, Matthew Perelman,

Hye Young Ra, Kayla Safavi, Niall Sulcer

PATRON EXPERIENCE ASSOCIATES

Kaite Brandt, Casey Collaso,

Farrah Gharibian, Juls Hoover,

Kallie Pong, Jessaica Shields,

Max Tel, Jenna Zhu

COMPANY MEMBERS

John Achorn, Bernard K. Addison, Rhonda Aldrich, John Allee, Heather Allyn, Tony Amendola, John Apicella, Ben Atkinson, Tessa Auberjonois, Paul Baird, Gigi Bermingham, Daniel Bess, Daniel Blinkoff, John Bobek, Andrew Borba, Chad Borden, Christopher Breyer, Bill Brochtrup, Anne Gee Byrd, Nick Cagle, Jane Carr, Jon Chaffin, Emily Chase, Kendra Chell, Shannon Lee Clair, Josh Clark, Avery Clyde, Barry Creyton, JD Cullum, Paul Culos, Nicholas D'Agosto, Gregg T. Daniel, Julia Davis, Jason Delane Lee, Ramón de Ocampo, John DeMita, David DeSantos, Seamus Dever, Etta Devine, Gabriel Diani, Dawn Didawick, Francia DiMase, Mark Doerr, Daniel Dorr, Nike Doukas, Sarah Drew, Cherish Monique Duke, Paul Eiding, Nicole Erb, Terry Evans, Scott Ferrara, James Ferrero, Martin Ferrero, Karianne Flaathen, Julia Fletcher, Bo Foxworth, Jeff Thomas Gardner, Matthew Goldsby, Robert Goldsby, Alexandra Goodman, Eve Gordon, Emily Goss, Belen Greene, Ellis Greer, Harry Groener, Matthew Grondin, Arye Gross, Tim Halligan, Simon Helberg, Alexandra Hellquist, Steve Hofvendahl, Shannon Holt, Sally Hughes, Alberto Isaac, Antonio Jaramillo, Judy Louise Johnson, Dylan Jones, Verilyn Jones, Gerard Joseph, Luis Kelly-Duarte, Connor Kelly-Eiding, Michael Kirby, Lily Knight, Tamara Krinsky, Chelsea Kurtz, Mildred Marie Langford, Adrian LaTourelle, Paul Lazarus, Jay Lee, Emily Lenkeit, Ian Littleworth, Melanie Lora, Henri Lubatti, Jazzlyn K. Luckett, Aaron Lyons, Jill Maglione, Abigail Marks, Leo Marks, Kwana Martinez, Anna Mathias, Kellie Matteson, Dakin Matthews, Sandra McClain, Don McManus, Anne McNaughton, Mike McShane, Desirée Mee Jung, Bill Mendieta, Peter Mendoza, Adam Meyer, Lynn Milgrim, Richard Miro, Elyse Mirto, Rosalyn Mitchell, Ned Mochel, Rebecca Mozo, Rob Nagle, Ann Noble, Jeffrey Nordling, Catia Ojeda, Linda Park, Melinda Peterson, Robert Pine, Erin Pineda, Lawrence Pressman, Philip Proctor, John Prosky, Deborah Puette, Anna Quirino-Miranda, Carolyn Ratteray, Lloyd Roberson II, Spencer Rowe, Jeanne Sakata, Ned Schmidtke, Liza Seneca, Armin Shimerman, Stephanie Shroyer, John Sloan, Adam J. Smith, Kurtwood Smith, Peter James Smith, Devon Sorvari, Paul Stanko, Janelen Steinger, Joanna Strapp, Susan Sullivan, James Sutorius, Elizabeth Swain, Joel Swetow, Kitty Swink, Jeanne Syquia, Reba Thomas, R. Scott Thompson, Danielle Thorpe, Brian Tichnell, Jeff Torres, Jocelyn Towne, Rebekah Tripp, Marcelo Tubert, Peter Van Norden, Tim Venable, Geoffrey Wade, Todd Waring, Patrick Wenk-Wolff, Laura Wernette, Amelia White, Karen Malina White, Abby Wilde, Jules Willcox, Paul Willson, Alicia Wollerton, Zoe Yale, Kelvin Yu, Buck Zachary, Josh Zuckerman

TITANS

Specially designated company members who have contributed above and beyond!

John Achorn, John Apicella, Fran Bennett, Ralph Drischell, Robert Goldsby, Gregory Itzin, Dakin Matthews, Anne McNaughton, Rob Nagle, Angela Paton, John Sloan, Kitty Swink



Deborah Puette in The Little Foxes (2018), Photo by Geoffrey Wade Photography.

SUBSCRIBERS HAVE MORE FUN!

- SAVE UP TO 25% ON ALL TICKETS
(INCLUDING EXTRA TICKETS FOR FRIENDS)

- UNLIMITED FREE EXCHANGES

- WAIVED HANDLING FEES

- ACCESS THE BEST AVAILABLE
SEATS BEFORE THE GENERAL PUBLIC

ANTAEUS.ORG/SUBSCRIBE
818.506.1983

2023/24 SEASON

SHE

A WORLD PREMIERE

WRITTEN BY

MARLOW WYATT

DIRECTED BY

ANDI CHAPMAN

OCT 15 - NOV 20, 2023

THE WINTER'S TALE

WRITTEN BY

WILLIAM SHAKESPEARE

DIRECTED BY

ELIZABETH SWAIN

FEB 4 - MAR 11, 2024

NORA

A STAGE VERSION OF

IBSEN'S A DOLL'S HOUSE BY

INGMAR BERGMAN

TRANSLATED AND ADAPTED BY

FREDERICK J. MARKER &

LISE-LONE MARKER

DIRECTED BY CAMERON WATSON

APR 21 - MAY 26, 2024

THE IMPORTANCE OF BEING EARNEST

WRITTEN BY

OSCAR WILDE

DIRECTED BY

GREGG T. DANIEL

JUL 14 - AUG 19, 2024



Alberto Isaac in Everybody (2022), Photo by Jenny Graham