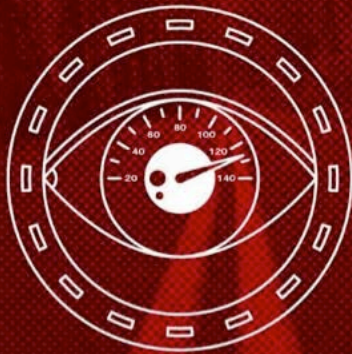


iama  
\*\*\*\*\*

TEN YEAR ANNIVERSARY SEASON 2017-2018  
10



## REDLINE

by Christian Durso  
Directed by Eli Gonda

IAMA Theatre Company **WORLD PREMIERE**

October 21 - November 19  
The Lounge Theatre



## SINNER'S LAUNDRY

by John Lavelle  
Directed by Becca Wolff

IAMA Theatre Company **WORLD PREMIERE**

October 20 - November 19  
The Lounge Theatre

# @iamatheatre

IAMA Theatre Company

Presents

The World Premieres of

## Redline

written by Christian Durso\*

directed by Eli Gonda\*

## Sinner's Laundry

written by John Lavelle\*

directed by Becca Wolff^

Producers: Tom DeTrinis\* & Jen Hoguet

Stage Manager: Amber Caras

Set Designer: Rachel Myers

Lighting Designer: Josh Epstein

Lighting Designer: Scot Gianelli

Composer/Sound Designer: Peter Bayne

Costume Designer: Melissa Trn

Scenic Paint: Karen Renee

Properties: Michael O'Hara

Fight Director: Edgar Landa

Engine Design: Jo Crandell

Technical Director: Lenny Wolff

Assistant Director, *Redline*: Murielle Zuker

Assistant Director, *Sinner's Laundry*: Alex Alcheh

Dramaturg, *Sinner's Laundry*: Giovanni Adams

Casting: Jordan Bass / Bass Casting

Publicist: Lucy Pollak

^The Director is a member of the Stage Directors and Choreographers Society, a national theatrical labor union.



Enjoy the shows?

Let us know!

#RedlineIAMA

#SinnersIAMA



*\*Indicates Member of IAMA Theatre Company  
 \*\*Indicates Member of Actor's Equity Association*

**Redline Cast:**

James Eckhouse\* \*\* .....RAYMOND  
 Graham Sibley\* \*\* .....JAMIE  
 Drew Rausch\*\* .....JAMIE (u/s)

**Sinner's Laundry Cast:**

Courtney Sauls\* .....JESS  
 Christine Woods\* .....SAM  
 Anna Lamadrid\* .....JESS (u/s)  
 Sarah Utterback\* .....SAM (u/s)



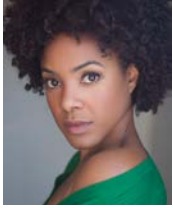
**James Eckhouse** (RAYMOND) I am excited and proud to be a new member of IAMA...Broadway: *'All The Way'*, Off-Broadway: *'Geniuses'*, *'Rise and Rise of Daniel Rocket'* - Playwright's Horizon; *'Ballad of Soapy Smith'* - Public; *'Emily'* - Manhattan Theater Club, *'Dubliners'* - West Bank; Los Angeles credits include - *'The Escort'* - Geffen Playhouse, *'The Goat'* - Mark Taper Forum, *'The Downside'* - Pasadena Playhouse, Other regional credits: La Jolla Playhouse, Old Globe, The Guthrie, Williamstown, Actors Theater of Louisville...Film: *'Avengers'*, *'One True Thing'*, *'Junior'*, *'Big'*, *'Defending Your Life'*, *'Trading Places'*... TV: Jim Walsh on *'Beverly Hills 90210'*, guest star roles on over 50 series.



**Anna Lamadrid** (JESS U/S) is an excited new IAMA member. LA Theater: *Betty 3 in Collective Rage* (Ovation Recommended) @ Theatre @ Boston Court, Gloria (U/S) in *Species Native to California* @ IAMA Theatre, Phebe in *As You Like It* @ Antaeus Theatre and Lizette in *Fixed* @ Echo Theatre. MFA - University of Washington. Maggie Flanigan Meisner Conservatory (NY). More about me: [www.anna-lamadrid.com](http://www.anna-lamadrid.com)



**Drew Rausch** (JAMIE U/S) is very excited to finally get a chance to work with IAMA. Drew has worked in professional film, TV and theatre since graduating from the University of Norte Dame. Drew can currently be seen as recurring characters Tony Kelso on *Longmire* and Firefighter John Finch on *Grey's Anatomy*. Other recent TV credits: *Night Shift*, *Castle*, *Elementary*, *NCIS*, *NCIS: LA*, *The Closer*, *The Mentalist*, *Bones*, *True Blood* and others. Recent film credits: *All I Want*, *Closure*, *Is That a Gun In Your Pocket?...*, *Curve*, *Battleship*, *The Perfect Daughter* and *Romantically Speaking*. Drew is also a founding member of InHouse Theatre Company. Thanks to my family. Love to Jamie. Go Cubs.



**Courtney Sauls** (JESS) As a young girl Courtney knew her passion was in acting. She attended the Performing Arts High School in Houston, TX and received her BFA from NYU. Now in Los Angeles making a name for herself in television and film, Courtney has continued to find ways to fulfill her love of the stage. She has appeared on *The Mindy Project* and *Dear White People* the movie and the Netflix show. Favorite projects include *Ladylike*, a short film that thrived in the festival circuit and *Twenties*, in development at Hulu. She is overwhelmingly grateful for the opportunity to work on this beautiful piece as a new member of IAMA.

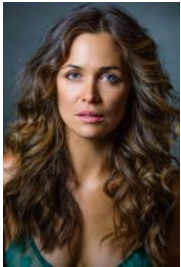


**Graham Sibley** (JAMIE) is a founding member of IAMA Theatre Company and a member of EST-LA. RECENT TV: *Jane The Virgin* (currently recurring), *Fear The Walking Dead*, *How To Get Away With Murder*, *Grey's Anatomy*, *The Newsroom*. RECENT FILM: *Sully*, *Grow House*, *Threshold*. Graham also stars in three features coming out in 2018: Honored for Lionsgate, Better Off Zed, Poor Greg Drowning as well as Netflix's new anthology series *Dark/Web*. Special love and undying gratitude to Marilyn, Mom and Dad, Ran and my IAMA fam. Christian, James, Eli, Muriel and Amber -- it's been an honor to dig deep with you guys!



**Sarah Utterback** (SAM U/S) Theater credits include *The Accidental Blonde* and *Surfer Girl* (IAMA original cast), *Mud*, *North of Providence*, *Il Bidone* and *Ladybird* (Rushforth Productions), *Hamlet*, *BASH*, *Taken in Marriage* (Steppenwolf Garage Theater), *Full Circle* (NYU mainstage), *Who's Afraid of Virginia Woolf* (NYU), and *Macbeth* (RADA). TV & Film: *NCIS*, *Mysteries of Laura*, *Grey's Anatomy*, *Cold Case*, *Medium*, *Ghost Whisperer*, *Family Guy*, *Pathlights* and *My First Time*

*Driving*. BFA from NYU's Tisch School of the Arts and 2003 graduate of the School at Steppenwolf. Founding member of IAMA Theatre Company.



**Christine Woods** (SAM) is known for her work in television and film, most recently, as Meredith Rumack in *Macon Blaire's I Don't Feel at Home in This World Anymore*-Sundance Grand Jury prize 2017, Demetri Martin's *Dean*, and Netflix's *Handsome; A Murder Mystery*. Other credits; AMC's *The Walking Dead*, NBC's *Perfect Couples*, *Go On*, *About A Boy* and ABC's *Flash Forward*, *Man with a plan*, *Life in Pieces*, *The Odd Couple*, *The Closer*, *House M.D*, *NCIS New Orleans* and more. Stage work most recently includes IAMA's production of *A Dog's House*. She is beyond grateful to be a part of this wonderful new work as well as a member of the incomparable IAMA family.

**Giovanni Adams** (Dramaturg) one-man musical *Love Is A Dirty Word* received its world premiere at VS. Theatre. He appeared in *The Model Apartment* at Geffen Playhouse and *One Night in Miami* (Rogue Machine, LA Drama Critics Circle and NAACP Theatre Award). He has participated in the Pacific Playwrights Festival, Bay Area Playwrights Festival, and Writer's Workshop Retreat at Center Theatre Group to develop new works. Stage: *Mount Misery* (Cutting Ball), *The Recommendation* and *Bela Lugosi's Dead* (IAMA) and *Miss Julie* and *King Lear* (Yale Repertory Theatre). Film/TV: *Nina*, *Criminal Minds*, *Zach Stone is Gonna Be Famous*, *Grey's Anatomy* and *Gary Unmarried*. Giovanni was born in Jackson, Mississippi and received his BA from Yale University.

**Alex Alchek** (Assistant Director) is thrilled to be working with IAMA again. As an actor he was an understudy for the last production, *Species Native to California*. Other recent acting credits include a supporting role in the feature, *Home Again*, and recurring on Netflix' *Dear White People*.



**Jordan Bass** (Casting Director) is thrilled to be working with IAMA for the first time. Select Film: *Wind River*, *Annabelle*, *The Leisure Class* (HBO Project Greenlight), *Izzy Gets the F\*&% Across Town*, *Mine*, *Martyrs*, *Hard Sell*, *Summer of 8*, *The Last Exorcism*. Select TV: *Hyperlinked* (YouTube Red), *The 5th Quarter* (Verizon Go90), *Beerfest* (CW Seed), *Suit Up*, *Svetlana*, *Big Time Rush*, *Spartacus*. [www.basscasting.com](http://www.basscasting.com)

**Peter Bayne** (Composer/Sound Designer) Original Music & Sound Design Credits include Center Theatre Group, South Coast Repertory, Pasadena Playhouse, Antaeus Theatre Company, A Noise Within, Theatre @Boston Court, The Fountain Theatre (Resident Composer and Designer), Rubicon Theatre Company, The Colony Theatre Company, The Actors' Gang, Rogue Machine Theatre, Skylight Theatre Company, Theatre of Note, and The Elephant Theatre Company. Other regional credits include American Repertory Theater, Commonwealth Shakespeare Company, Portland Playhouse, Shakespeare and Company, and Actors' Shakespeare Project. Bayne is highly active as a composer in film and television. He produces dance music and performs as a multi-instrumentalist and vocalist. He is a previous winner of the Ovation Award, LA Drama Critics Circle Award, Stage Raw Theatre Award, LA Weekly Theatre Award, and others. [peterbayne.com](http://peterbayne.com)

**Amber Caras** (Stage Manager) is very excited to be back with IAMA Theatre Company! Amber graduated from CSULB (2012, magna cum laude) with a degree in Technical Theatre. Amber has worked in all aspects of technical entertainment with such companies as South Coast Repertory, The Curtis Theatre, CBS, KTLA5, Entertainment Design Corporation and many more. Amber's true passion is helping to make new plays a reality and is happy to be working on these two amazing new works! Amber would like to thank Steve and her cat Atticus for their unwavering support.

**Tom Detrinis** (Co-producer) is excited to return with IAMA after *Species Native To California*. He most recently produced *So Long Boulder City* and *Tilda Swinton Answers An Ad On Craigslist* (also directed by Tom) at the Celebration Theater - where he is the director of alternative programming. This winter, he will be serving as Associate Producer and understudy on the NYT Critic's Pick *Bright Colors and Bold Patterns* starring Drew Droege. As an actor, he recently played Binx the Cat in *Hocus Pocus* (Rockwell Table and Stage) and *Die Mommie Die* (Celebration Theatre). Tom is also the producing director of the hilarious parody magic, 30 Minute Musicals. [detrinis.com](http://detrinis.com) or @detrinis on insta for kicks.

**Christian Durso** (Playwright) is ecstatic to debut his second world premiere with IAMA Theatre Company. His plays have been performed in Los Angeles, New York, San Francisco, New Orleans, Prague (CZ), and Reno. His work has also enjoyed workshops and readings at The Roundabout Underground, The Flea, The Old Globe, Brimmer Street Theatre, and EST/LA. He wrote an eight part mini series for HBO Asia and adapted the YA novel *Like No Other* into a feature for Overbook Entertainment. Proud Co-Artistic Director of IAMA Theatre Company. BFA, NYU. MFA, USD. Dedicated to Dad.

**Josh Epstein** (Lighting Designer) previously designed lighting for IAMA's productions of *A Dog's House* and *Species Native to California*. Josh has designed lighting at many of the top regional theatres in the country including the Mark Taper Forum, Geffen Playhouse, Kirk Douglas Theatre, Pasadena Playhouse, South Coast Repertory, The Guthrie Theater, Goodman Theatre, Baltimore Center Stage, Trinity Repertory Theater, Long Wharf Theatre, Alliance Theatre, Geva Theatre Center, Actors Theatre of Louisville, Playmakers Repertory, Cincinnati Playhouse in the Park, Philadelphia Theatre Company and the Paper Mill Playhouse. Josh teaches lighting design at the UCLA School of Theater, Film and Television. He received his M.F.A. from NYU's Tisch School of the Arts and is a recipient of the NEA/TCG Career Development Program for Designers and a member of the O'Neill National Playwrights Conference Artistic Council. [www.joshepsteindesign.com](http://www.joshepsteindesign.com).

**Scot Gianelli** (Asst. Lighting Designer) is a new to Los Angeles and happy to be collaborating with the incredible IAMA team. Previous collaborations include Ars Nova, The Flea, Columbia University, The Solomon R Guggenheim Museum, New York Musical Theatre Festival, The Access Theatre, New York Fringe Festival, American Musical and Dramatic Academy, Centerstage Baltimore, Arizona Theatre Company, Italian Dance Connection, Bucks County Playhouse and the Pacific Conservatory of the Performing Arts. [www.scotgianelli.com](http://www.scotgianelli.com)

**Eli Gonda** (Director) IAMA: Dorothy Fortenberry's *Species Native to California*; IAMA Reunion 2016; *Quitters*, by Lila Feinberg (IAMA Fest 2015); *I Didn't Want A Mastodon*, by Haley Feiffer (IAMA Fest 2014), and others. RECENT THEATRE: 2016 and 2017 ABC|Disney Talent Showcase (El Portal Theater); *Joey McIntyre's The Kid*, by Christine Boylan (Denver Center for Performing Arts); *Little Miss Fix-It* (Roundabout Underground); The FIFA International World Congress- Opening Ceremony (Atlantis, Bahamas); *The Catholic Girl's Guide to Losing Your Virginity* (Pico Playhouse, Ojai Playwrights); Producer of Mike Birbiglia's *Sleepwalk With Me* (Bleecker Street Theater). FILM: "*The Outfield*" (Fullscreen Films); "*The Rooster*," by Danny Strong, and Producer of the documentary *American Teen* (Paramount Vantage, Sundance Film Festival Award). TV: Disney|ABC Directing Program, "*Husbands*," by Brad Bell and Jane Espenson (CW Seed, ISA and IAWTV Award), and Associate Director of *Cyrano de Bergerac* (PBS). GRADUATE: Georgetown University. PROUD MEMBER: IAMA Theatre Company.

**Jen Hoguet** (Co-producer) is a freelance producer based in New York City and the 2015 recipient of the T Fellowship, a fellowship started by Hal Prince for emerging creative producers. She currently works as the Associate Artistic Director for Blue Spruce Productions and the Manager of Creative Development for Big Block. As an independent producer, her works in development include *The Years Between*, with music & lyrics by Zoe Sarnak and a book by Kirsten Guenther. She holds a Bachelor's Degree in Theatre and History from Northwestern University and a Masters of Fine Arts in Theatre Management & Producing from Columbia University.

**Edgar Landa** (Fight Director) is an actor/director and creates fights & violence for theatres large and small. Credits include: *Runaway Home* (Fountain Theatre); *Mr. Burns* (Sacred Fools); *The Model Apartment* (Geffen Playhouse); *That Pretty Pretty*; or, *The Rape Play* (Son of Semele); *Hit The Wall* (Los Angeles LGBT Center), *El Henry* (San Diego Rep/La Jolla Playhouse); *The Reunion* (South Coast Repertory); *Parfumerie* (The Wallis); *The Nether* (CTG/Kirk Douglas Theatre). Edgar serves on the faculty of the USC School of Dramatic Arts and is a long-time collaborator of Son of Semele Ensemble. He is an AEA member and Pro99 supporter of intimate theatre in Los Angeles. [www.edgarlanda.com](http://www.edgarlanda.com)

**John Lavelle** (Playwright) is a Drama Desk Award winning actor who has performed on Broadway, off-Broadway, Regionally, and at The Royal Shakespeare Company. He has appeared on television and in numerous films, including Ava DuVernay's *Selma*. As a member of the IAMA Theatre Company he has served as actor, director, and technical director. Mr. Lavelle is a graduate of NYU Tisch School of the Arts and has studied at Upright Citizens Brigade. John's play *Woulda, Coulda, Shoulda* was produced last year for the IAMA Theatre Company's Reunion. His short play *Partners* was performed at ABC's Discover Talent Showcase.

**Rachel Myers** (Set Designer) designs for Stage and Film. Theatre- Center Theatre Group, South Coast Repertory, The Shakespeare Theatre, The Getty Villa, Robert Wilson's Watermill Center and Williamstown Theatre Festival, Rattlestick West. Production Design Film-"Short Term 12," SXSW Winner, "*The Drowning*," "*Search Party*." TV- HULU "*East Los High*," "*Five Points*" Facebook, "*Sing It*" YouTube-Red, "*Faking It*" MTV, "*Blue*" LIFETIME-ADG Award, "*Paloma*" and "*Video Game High School*" Lionsgate. Rachel's award winning experiential design company, 3 PENNY DESIGN has conceived and produced live events and brand activations for "The Emmy's," "The Golden Globe Awards," VIDCON, Times Square and more. MFA from the Yale School of Drama, member of the ADG800, USA829. [www.3pennydesign.com](http://www.3pennydesign.com), [www.rachelmyersdesign.com](http://www.rachelmyersdesign.com).

**Michael O'Hara** (Prop Manager) is happy to be working with IAMA. Besides IAMA his prop work has appeared at Celebration, Coeurage, East West, Theatre of NOTE, the Blank, the Road Theatre, among others. He has several ongoing/upcoming shows (Celebration, Road Theatre, Theatre of NOTE, Skylight Theatre, and Coeurage) and he anticipates having a website ready to launch in the coming year. Michael has also worked in other capacities in theatre both onstage and behind the scenes.

**Melissa Trn** (Costume Designer) is pleased to be working with IAMA again after designing *Species Native to California*, Jon Caren's *The House That Jake Built* and *The Recommendation*. Other credits include: *The Trojan Women: After Euripides* (BAM/SITI Company, NYC/Getty Villa) *Antigone* (SITI Company, NYC), *The Roommate* (San Francisco Playhouse), *Future Thinking* (South Coast Rep), *Friends in Transient Places* and *Reunions!* (Fresh Produce'd LA), *Twelfth Night* (Asolo Rep), *39 Steps* (Triad Stage), *Roller Disco* (ART's Oberon), *From The Fire* (composed by Elizabeth Swados), *Richard II* (Yale Rep), *The Me Nobody Knows* (Black Rep, St. Louis), as well as over eight productions for Telluride Theater in Telluride, CO where Melissa is an Associate Artist. Melissa has a MFA from The Yale School of Drama.

**Becca Wolff** (Director) Upcoming projects include Giovanni Adams' solo musical *Love Is A Dirty Word* (Tilted Field) and the world premiere of *Weightless* (concert reading named to SF Chronicle's Top Ten Theatre Events of 2016) — both at Z Space in San Francisco. She co-created *Our Country* (Wilderness/piece by piece productions), which will appear at the Under the Radar Festival at the Public Theater in January 2018. She has directed at ACT, Theatreworks, The Getty Villa, Son of Semele and Theatricum Botanicum among others. She is co-founder of Tilted Field Productions, named "Best Rock Musical Theater Company" by LA Weekly. MFA Directing, Yale School of Drama. Artistic Director Emeritus, IAMA

**Murielle Zuker** (Assistant Director) is an actor, writer, and director. She first met the folks at IAMA last season, playing La Llorona in Dorothy Fortenberry's *Species Native to California* and is thrilled to be back with the company, this time off stage. A special thanks to the crew and cast of *Redline* for the open, creative space in which this powerful piece has been birthed, and a very special thanks to her husband, whose love and support makes it all possible.

This production is presented under the auspices of the Actors' Equity Los Angeles Membership Company Rule.



If you'd like to see IAMA's other show playing in rep this fall, please use the discount code **IAMAREP** to receive \$10 off the ticket price when purchasing through our website at <http://www.iamatheatre.com/>. If you have any problems, contact [info@iamatheatre.com](mailto:info@iamatheatre.com).

A SPECIAL THANK YOU TO  
OUR PATRON OF THE ARTS  
**SHONDA RHIMES**  
and the  
Rhimes Family Foundation



## **Thank you to our IAMA DONORS**

The Barillari Family  
Nicholas Caprio  
Michelle & Joel Levitin  
Schreck, Rose, et al (corporate donation)  
Katie Lowes & Adam Shapiro  
Elizabeth Astrof  
Ilene Garfield  
The Nueman-Lam Family Foundation  
Bonnie Zane  
Network for Good  
Judith Jameson  
Hannah Shapiro  
Brianna Little  
Tiffany Deprima  
Ilene Garfield  
James Gordon  
Howells Trust  
Ashley Doherty  
Michele Rettele

## **Special Thanks to:**

LA Stage Alliance  
Celebration TheatRE  
The Beachwood Cafe  
Warner Loughlin Studios  
Tim Swiss  
Marco Gerace  
TLG Auto for Porsche consultation  
Mika, Sawyer, and Jemima Gonda  
The Pico Playhouse  
Lisa Stern  
Jen Fenten  
Lenny Wolff  
Geri Wolff  
Megan Wagner  
Kris Kataoka

## **IAMA Leadership**

Artistic Directors: Stefanie Black, Katie Lowes, Christian Durso

Managing Director: Lara Myrene

Associate Artistic Director: Margaux Susi

Literary Manager: Stefanie Black

Associate Literary Manager: Emily Rowan

Company Manager: Laura Perloe Mann

Marketing Director: Adam Shapiro

Social Media Manager: Margaux Susi