

ANTAEUS

Theatre Company
presents:

The Zip Code Plays: Los Angeles

Season Two

May 20, 2021

Antaeus Theatre Company Presents

The Zip Code Plays: Los Angeles
Season Two

Featuring

Bill Brochtrup, Anne Gee Byrd, Eve Gordon, Tamarra Graham,
Ellis Greer, Leonard Earl Howze, Karen Huie, Jade Hykush,
Tamika Katon-Donegal, Mildred Marie Langford, Cici Lau,
Parnell Damone Marcano, Don R. McManus, Mike McShane,
Rob Nagle, Keiana Richàrd, Dale E. Turner, Karen Malina White

Creative Team

Series Host

Ramón de Ocampo

Audio Producer, Sound Designer, and Foley Artist

Jeff Gardner

Original Music

Ellen Mandel

Production Stage Manager

Taylor Anne Cullen

Audio Editor

Diego Tapia

THE ZIP CODE PLAYS SERIES IS GENEROUSLY SUPPORTED IN PART BY:
The Michael J. Connell Foundation

90026: Echo Park - \$10 and a Tambourine
by Mildred Inez Lewis
Directed by Gigi Bermingham
Sponsored by Arlene Vidor

Broadcasting live on the radio from the Angelus Temple, famed 1920s evangelist Aimee Semple McPherson is forced to defend her past, her present and the future of Los Angeles itself when she entertains two visitors, one alive and one dead. Religion, power and celebrity are all up for grabs in this peek into the city's early days.

90069: West Hollywood - Brunch, Interrupted
by Sean Abley
Directed by Michael A. Shepperd
Sponsored by Reba & Geoffrey Thomas

When Joe and Moses, an interracial gay couple of a certain age, are confronted by a new, straight resident of WeHo outside their favorite queer bar, questions of privilege, code switching, and daytime drag burst like an overstuffed piñata in this hilarious and provocative look at who is really colonizing whom.

90303: Inglewood - The Vig
by Paula Cizmar
Directed by Bernadette Speakes
Sponsored by Rosemary A. Hernandez

Hollywood Park Racetrack is about to close its doors forever, but that doesn't stop new-to-town Lina from searching for a long lost relative – with nothing but a yellowing polaroid and an old tip sheet. The odds for the future are long in this look at the dreams that drive people to reinvent themselves in the City of Angels.

91331: Pacoima - Gold & Shine
by Khari Wyatt
Directed by Sandra McClain
Sponsored by Ruth Eliel & Bill Cooney

Dr. LaShae Fair, a university professor stung by professional disappointment, has a chance encounter with an old man and his mule that pushes her into a thrilling storm of family revelations, haunting visions, and altered realities, where she discovers an answer to the question, "What do we owe to the past?"

91601: North Hollywood - End of the Line
by Peppur Chambers
Directed by Gregg T. Daniel
Sponsored by April Webster

Watching the world go by from her NoHo balcony, self-appointed "detective" Aimee-Lynn is a curious observer of the goings-on in the neighborhood. But when a suspicious incident occurs on the street below, her worldview is changed forever in this dramedy about the duality that exists right before our eyes – if we can see it.

91754: Monterey Park - Bingo Bitches
by Elizabeth Wong
Directed by Jennifer Chang
Sponsored by Sonja Berggren & Patrick Seaver

It's Bingo day at the local senior center and Kwan Tai is introducing her old friend Wong Tai to the game and all of its rituals, including her lucky potato. But who will be the big winner when nemesis Mrs. Boodakian turns up? Daubers, cards, and insults fly in this raucous comedy about claiming one's space.

The Cast - The Zip Code Plays



Bill Brochtrup



Anne Gee Byrd



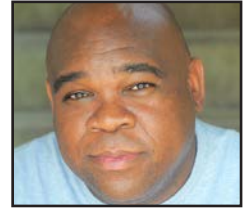
Eve Gordon



Tamarra Graham



Ellis Greer



Leonard Earl Howze



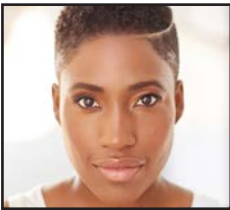
Karen Huie



Jade Hykush



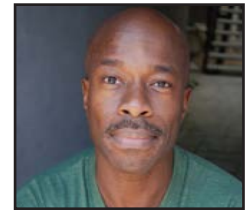
Tamika Katon-Donegal



Mildred Marie
Langford



Cici Lau



Parnell Damone
Marcano

The Cast - The Zip Code Plays



Don R. McManus



Mike McShane



Rob Nagle



Keiana Richard



Dale E. Turner



Karen Malina White

The Playwrights - The Zip Code Plays



Sean Abley



Peppur Chambers



Paula Cizmar



Mildred Inez Lewis



Elizabeth Wong



Khari Wyatt

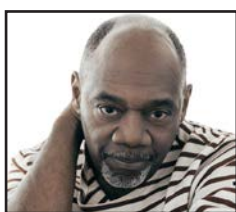
The Directors - The Zip Code Plays



Gigi Bermingham



Jennifer Chang



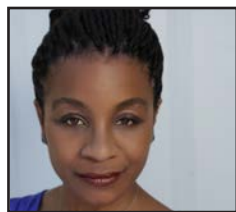
Gregg T. Daniel



Sandra McClain



Michael A. Shepperd



Bernadette Speakes

CAST

BILL BROCHTRUP: At ANTAEUS:

Cloud 9, Mrs. Warren's Profession, The Seagull, Peace in Our Time, The Malcontent, Cousin Bette, Tonight at 8:30, Pera Palas. Other Theater: Primary Stages, South Coast Repertory, Ensemble Theatre Company, Fountain Theatre, Black Dahlia, Odyssey Theatre Ensemble, L.A. Theatre Works, Pasadena Playhouse, Rogue Machine Theatre. Film: *Hypnotized, Life As We Know It, He's Just Not That Into You, Ravenous.* TV: recurring on *Major Crimes, Shameless, Kendra*; series regular on *Public Morals, Total Security, NYPD Blue.* Spoken Word: *Sit 'n Spin, Rant & Rave, Spark Off Rose*, as well as numerous other storytelling venues. billbrochtrup.com

ANNE GEE BYRD: At ANTAEUS: *Mrs.*

Warren's Profession, Autumn Garden, Mother Courage (LA Weekly Award). Other recent credits include: *Good People* at La Mirada; *Three Views of the Same Object* and *Four Places* (LADCC Award, Rogue Machine Theater); *The Savanna Disputation* (Colony Theatre); *Kate* in *All My Sons* (LADCC Award, Matrix Theater); *Breadcrumbs* (Theater 150 in Ojai); *I Never Sang For My Father* (The New American Theater Company). She has also appeared in L.A. at the Mark Taper Forum, the Geffen Playhouse, Pasadena Playhouse, L.A. Theater Works, the Odyssey, and the Andak Stage Co. Regionally, she has worked at South Coast Repertory, The Old Globe, San Diego Rep, Seattle Rep, La Jolla Rep, ACT, San Francisco Rep, The American Shakespeare Festival, Connecticut Rep, the Great Lakes Shakespeare Festival,

the McCarter, Princeton Rep to name a few. She recently appeared on TV in *Murder in the First* and in the motion picture *Wild*.

EVE GORDON: At ANTAEUS: *Diana of Dobson's, As You Like It, Picnic, The Curse of Oedipus, You Can't Take It With You, Peace in Our Time, The Autumn Garden.* Other Theater: *Open House* (Skylight Theatre); *The Ugly One* (EST/LA); *The End of the Day* (Coast Playhouse); *Candide* (Goodman Theatre); *Hang On To Me* (Guthrie Theatre, Peter Sellars); *Africanis Instructus* (Festival d'Automne, Richard Foreman); *Measure for Measure* (Yale Repertory Theatre, John Madden); others. TV/FILM: *Felicity; Honey We Shrunk Ourselves; Big Little Lies; Irresistible, Don't Trust the B in Apt 23*, and others. Training: Brown University and Yale School of Drama.

TAMARRA GRAHAM: Tamarra Graham is a Detroit native, licensed clinical psychologist, and U.S. Navy veteran. She is a StageSceneLA Scenie Award winner for Breakout Actress of the Year in *Bee-luther-hatchee* (Sierra Madre Playhouse) and *Pure Confidence* (Lower Depth Theatre Ensemble). Other LA Theater credits include: *Handjob* (Echo Theater Company) and *Everyday Heroes* (Geffen Playhouse). Tamarra has also made the rounds showcasing her comedy chops at the Second City, Upright Citizens Brigade, iO, The Pack Theater, and Comedy Central Stage. On-screen credits include: *Criminal Minds, Adam Ruins Everything, Kidding*, and *K-Town Cowboys*. When not performing, she enjoys twisting her hair into bantu knots while watching *The Real Housewives*.

ELLIS GREER: At ANTAEUS: *Native Son, Three Days in the Country, Les Liaisons Dangereuses*. Ellis was proud to remount *Native Son* at Center Theatre Group's "Block Party." Ellis can be seen and heard in many L.A. Theatre Works productions including: *The Thanksgiving Play, Charles Busch's Die Mommie Die, The Goodbye Girl, Jefferson's Garden* and the National Tour of LATW's *Seven*. Other LA Theater credits include: *The Matchmaker* at the Actor's Co-op and workshops and staged readings at Pasadena Playhouse, Independent Shakespeare Co. and others. Regional Theater credits include: *The Many Women of Troy* (Pallas Theatre Collective) and *The Diary of Anne Frank* (Oklahoma Children's Theatre). B.F.A. Acting, USC.

LEONARD EARL HOWZE: At ANTAEUS: Debut. Other Theater: *Salvage* (The Lounge Theatre); *Fences* (Lone Tree Arts Center). TV/Film: *Antwone Fisher, Barbershop, Kevin Can Wait, Brave New Jersey, Memphis Beat, Shameless, Live Cargo, The Ringer, True Memoirs of an International Assassin, The Lone Ranger*. Training: B.F.A., S.U.N.Y. Purchase College. Member: SAG/AFTRA, AEA.

KAREN HUIE: At ANTAEUS: Debut. Other Theater: *Little Women* (Playwrights Arena); *Washer and Dryer, Steel Magnolias, A Little Night Music, The Joy Luck Club* (East West Players); *Red Flamboyant* (Firebone Theatre). TV/Film: *This Country, Mom, Hollywood, Kidding, Baskets, This Is Us, Shameless, Why Women Kill, Animal Kingdom, Hawaii 5-0*. Video Game: *Ghost of Tsushima* (Yuriko); *Yakuza: Like a Dragon; Sekiro*.

Voiceovers: *Abominables, Onward, Incredibles 2, Boss Baby, Moana, Star Wars* (last 5 films). Recurring: *Great Pretender, Scissor Seven, Bystanders*. HB Studio, The New School for Social Research, La Mama, ETC, and Member of the ANTAEUS Playwrights Lab.

JADE HYKUSH At ANTAEUS: Debut. Other Theater: *Constantinople* (Secret Rose Theatre); *Saroyan, The Unpublished Plays* (Mark Taper Auditorium); *Happy Armenians* (NoHo Arts Center); *Girls Together Always* (Actors Company); *Front Street, Jews Without Money, The Sicilian Bachelor* (The Renegade); *Blood Wedding, Fog of War* (The Ventura Court Theatre); *Little Armenia* (The Fountain Theatre); *Tango Woman* (Comedy Store). TV/Film: *Claws, Teachers, E-Ring, Lois and Clark, The Trials of Rosie O'Neill, Chasing Tchaikovsky, The Ferguson's, Late for Dinner, The 13th Floor, Chaplin*.

TAMIKA KATON-DONEGAL: At ANTAEUS: Debut. Tamika is from Long Island, NY, and currently lives in Los Angeles. Theater: *Glove Story* (Pannдора Productions); *No Word in Guyanese for Me* (ARC Pasadena); *The Hotel Play* (Playwrights' Arena); *Vanya and Sonia and Masha and Spike* (Edgemar Theater); *Last Temptation of Paula Deen* (Lounge Theatre); *Rent* (Big Arts Lab); *Our Town* (Sierra Madre Playhouse); *Tree* (EST/LA); *Hair* (Candlefish Theater). TV/Film: *Marvel's Dr. Strange, Godzilla, Something Like a Business, Speechless, Fresh Off the Boat, Agent Carter, How to Get Away with Murder, Adam Ruins Everything, Wendell & Vinnie, The Newsroom, Veronica Mars*. Training: B.F.A. University of Southern California. Instagram & Twitter @elite_qt

MILDRED MARIE LANGFORD: At ANTAEUS: *Native Son* (Antaeus Theatre Company/Kirk Douglas Theatre - 2019 Block Party). Other Credits: *Gunshot Medley: Part 1* (Rogue Machine Theatre/WLCAC - Ovation Award Nominee); *Domesticated*, *Animal Farm*, *Venus*, *The Crucible* (Steppenwolf Theatre Company); *The Royale* (American Theater Company/BTAA - Best Featured Actress); *Luck of the Irish* (Next Theatre Company); *A Raisin in the Sun* (Milwaukee Rep/Timeline Theatre); *My Kind of Town*, *In Darfur* (Timeline Theatre); *Failure: A Love Story* (Victory Gardens Theater). TV/Film: *Delilah* (OWN), *Bosch*, *Chicago MED*, *Masters of Sex*, *Magic Funhouse* and *Boss*. Proud member of AEA & SAG-AFTRA.

CICI LAU: At ANTAEUS: Debut. Other Theater: *Mama from China* (Secret Rose Theatre); *Gumsimao* (Playwrights' Arena); *Joy Luck Club* (East West Players). TV/Film: *Paper Tiger*, *Shameless*, *Los Lobos* (*The Wolves*), *Better Things*, *Arrested Development*, *S.W.A.T.*, *Ryan Hansen Solves Crimes on Television*, *The Jade Pendant*, *Grey's Anatomy*, *Brooklyn-Nine-Nine*, *Fear the Walking Dead*, *Criminal Minds: Beyond Borders*, *Mike & Molly*, *Whitney*, *Torchwood*, *HOP*, *Burning Palms*, *Johnny Raikou*, *The Comedian*, *Love Arcadia*, *Mantervention*, *Breaking In*, *Sons of Anarchy*, *Love*, *Ping Pong Playa*, *Adventures of Johnny Tao*, *American Fusion*, *Robbery Homicide*, *The Tick*, *The League*, *Legally Blonde*, and *ER*. Last year Cici was in pre-production as an executive producer in a feature, *Her Missing Twin*. She is also a supporting

actor, and the filming recently wrapped. <http://imdb.to/2rv85iD>

PARNELL DAMONE MARCANO: First time with ANTAEUS! With Celebration Theatre: *The Producers*, *Booty Candy*, *The View Upstairs*, *Fucking Men*, *There's A Black Man in The White House*. Hudson Ave. Other Theater: *With Friends Like These*; *Bed, Boys & Beyond*; *It Started With A Lie*. Musical Theatre West: *Hello Dolly*, *Ragtime*. Multiple productions of *Dreamgirls* including: CLO of South Bay, 20th Anniversary at TOTS Fox Theater (Atlanta), 35th Anniversary at The Ford Theater. TV/Film: *Greenleaf*; *Old Dogs & New Tricks*; *BoomChickBoom*; *Tyrone Jones*; *Furst*; *Star Mapped*; *Bruise Violet*; *The Light*; *Nova*. B.F.A. Musical Theater, Loretto Heights College. Member: AEA, SAG-AFTRA.

DON R. MCMANUS: At ANTAEUS: *Uncle Vanya*. Feature credits include: *The Starling*, *Vice*, *Under the Silver Lake*, *Grand Piano*, *Grandma*, *The Maze Runner*, *Lucky Bastard*, *For A Good Time Call*, *Magnolia*, *The Shawshank Redemption*, *Under the Tuscan Sun*, *National Treasure*, *Hannibal*, *Air Force One*. TV credits include: *Sorry For Your Loss*, *Mom*, *Justified*, *24*, *Northern Exposure*, *NCIS*, *Private Practice*, *Rescue Me*, *Parks and Recreation*, *Boston Legal*, *Grey's Anatomy*, *Dexter*, *Seinfeld*, *Frasier*, *The Closer*, *CSI*, *Mad About You*. Stage credits include: New York Public Theater, Manhattan Theater Club, San Francisco's ACT, The Old Globe Theater, the Matrix Theater. A graduate of Yale University.

MIKE MCSHANE: At ANTAEUS: *Cat on a Hot Tin Roof, The Little Foxes, Cousin Bette, The Seagull, Tonight at 8:30*. Other Theater: *Assassins, Little Shop of Horrors, La Cage aux Folles* (Menier Chocolate Factory); *Henry IV, Part One, Hamlet, King John, Alls Well That Ends Well, The Winter's Tale* (California Shakespeare Festival); *Waiting For Godot, You, Nero* (Berkeley Repertory Theater); *A Funny Thing Happened On the Way to The Forum, Golden Boy* (American Conservatory Theater); *A Bright Room Called Day, The Stick Wife* (Eureka Theater). TV/Film: *Robin Hood: Prince of Thieves, Richie Rich, Tom & Huck, Office Space, Whose Line Is It Anyway? (U.K.) Seinfeld, ER, Frasier, Malcolm in the Middle, Wayward Pines, Doctor Who*. Member: AEA.

ROB NAGLE: At ANTAEUS: *The Little Foxes, The Hothouse, The Liar, Macbeth, Peace in Our Time*. Other Recent Theater: *Human Interest Story* (Fountain Theatre); *Apple Season* (Moving Arts); *Sucker Punch* (Coeurage Theatre Company); *Julius Weezer* (Troubadour Theater Company); *The Judas Kiss* (Boston Court Pasadena); *It's A Wonderful Life* (Pasadena Playhouse); *Stupid Kid* (Road Theatre); *Church and State* (New World Stages, Skylight Theatre); *Of Good Stock* (South Coast Repertory). Recent TV/Film: *Waubay, Blonde, Last Weekend, 60 Seconds, Dynasty, NCIS: New Orleans, The 11th Green, Little Fires Everywhere, Safety, Modern Family, Bad Samaritan, Fishing Naked, New Year's Eve, The Librarians, Grey's Anatomy*. Training: Northwestern University. Spouse: Heather Allyn. Pug: Houston. robnagle.com

KEIANA RICHARD: At ANTAEUS: Debut. Broadway: *Dividing The Estate* (Lincoln Center). Off-Broadway: *365 Days 365 Plays* (Cherry Lane/The Public); *Dividing The Estate* (Primary Stages); *Ghosts* (Pearl Theatre Company); *Forgotten World Reading* (The Public/Sundance Lab). Regional/LA: *Eclipsed* (McCarter Theatre); *The Trip To Bountiful* (Center Theatre Group); *Cowboy Elektra* (Getty Villa/Rogue Arts Ensemble); *Georgia McBride* (Ensemble Theatre). TV/Film: *The Player* (NBC); *Delocated* (Adult Swim); *12 Steps To Recovery* (VerizonFios Web); *Burns* (YouTube); *Mid-City Blue* (Pan African Film Festival). M.F.A., The University of California, San Diego. Member: AEA, SAG-AFTRA.

DALE E. TURNER: At ANTAEUS: Debut. Other Theater: *Joe Turner's Come and Gone, White Linen, Toys In The Attic* (Old Globe Theatre); *Inspecting Carol* (Repertory Theatre Of St. Louis); *Ain't Misbehavin'* (Cincinnati Playhouse); *A Christmas Carol* (San Diego Repertory Theatre); *Once On This Island* (Virginia Stage Company); *Big River, Showboat, The Secret Garden* (Sacramento Music Circus); *Cat On A Hot Tin Roof, Ceremonies In Dark Old Men* (Human I Theatre); *My One And Only, The Desert Song* (Starlight Musical Theatre); *Benches* (Broadwater Theatre). TV/Film: *Mom, Bones, Modern Family, House M.D., How I Met Your Mother, All The Way, Intolerable Cruelty, Electric Slide, My Name Is Lamar* (Writer/Producer). Member: SAG-AFTRA, AEA, AGVA, Television Academy. Daleeturner.com

KAREN MALINA WHITE: AT ANTAEUS: *Eight Nights, You Can't Take It With You, The Liar, Wedding Band, As You Like It*.

Other Theater: *The Ballad of Emmett Till* (LA Drama Critics Circle Award, LA Ovation Award), *Citizen, Runaway Home* (The Fountain Theatre); *The Mountaintop, Hedda Gabler, The Little Foxes, Behind The Sheet* (LATW); *The Old Settler* (International City Theatre, NAACP nomination); World Premiere of *In the Valley of the Shadow* (Rogue Machine); originated the role of Ernestine in the West Coast premiere of *Crumbs From the Table of Joy* by Lynn Nottage (South Coast Rep, NAACP Image Award); *Permanent Collection, Salt Fish N' Bakes, Distracted* (Mixed Blood Theatre). TV: *Cherish The Day, Lodge 49, Raven's Home, Kidding, Shameless, Snowfall, Animal Kingdom, How to Get Away with Murder, Veep, Mike and Molly, The Mentalist, A Different World, Malcom & Eddie, The Cosby Show*, and her highly recognizable voice was featured on The Disney Channel's *The Proud Family*, as the character of Dijonay. A role she will reprise in the upcoming reboot!

PLAYWRIGHTS

SEAN ABLEY is a screenwriter, journalist, dramaturg, novelist, and award-winning playwright. His most recent work, *Tea Party*, was part of the ANTAEUS LAB RESULTS reading series. His plays have been developed and performed at the Kennedy Center, Goodman Theatre, Celebration Theatre, Provincetown Theater, Fuse Theatre Ensemble, St. Louis Actors' Studio, Write/Act Repertory, Factory Theater, Merry-Go-Round Youth Theatre, SkyPilot Theatre Company, and the Virginia City Players. Sean has an M.F.A. in Playwriting

from The Playwrights Lab at Hollins University, and is a member of the ANTAEUS Playwrights Lab, the Writers Guild of America, Playwrights Union (Los Angeles), and the Dramatists Guild.

PEPPUR CHAMBERS is an international writer/producer/educator. A member of Circle X Emerging Playwrights Group, and the ANTAEUS Playwrights Lab, she uses her voice to scream, shout or sing about women's issues, social justice, and love. Her plays *For the Love of You, House Rules, The Build UP, Dick & Jayne Get A Life* and one-woman show, *Harlem's Awakening: Storytelling Live* have been produced in Los Angeles and Prague. A published novella author, she's also recently directed a short film she co-wrote, *Do Something*, shot during the pandemic, social distanced and entirely on iPhones. Learn more at penandpeppur.com where she tells stories of heroes, including her own.

PAULA CIZMAR is an award-winning playwright/librettist. Plays include: *Antigone X* (California Repertory) and *The Last Nights of Scheherazade*, winner of the Israel Baran Award. She is one of the writers of the site-specific *Hotel Play* (Playwrights Arena) and *Seven* (LA Theatre Works, plus 30+ productions in 22 languages). She wrote the libretto for *Invisible* (LA Opera Eurydice Found Festival), *Firecrackers* (commissioned by White Snake Opera), and won the Pittsburgh Festival Opera Fight for the Right competition for *Night Flight of Minerva's Owl*. She was awarded a Mellon Foundation On the Road grant and a Rockefeller residency at Bellagio. paulacizmar.com

MILDRED INEZ LEWIS: *The Museum Annex* (Central Works); *The Last Ride* (Company of Angels); *CowGirls* (EST-LA, Everyday Inferno, William Inge Playwriting Festival); *Submerged* (Actors Circle Ensemble, Goodly Frame). (Writer/Director) *Can Also Play* (Outfest Fusion, Outfest), *left* (Reel Rasquache, San Francisco African American Film Festival, Santa Barbara African American Film Festival). Training: HB Studios; B.A., Oberlin College; M.F.A. and M.A., UCLA. Member: Dramatists Guild, Company of Angels, Ensemble Studio Theatre-Los Angeles Playwrights Unit, Playground-LA. Awards: L.B. Williams Playwriting Contest, Humanitas' PLAY LA, Samuel Goldwyn Screenwriting Award. Publications: Applause 10 Minute Plays 2020, Breathe Fire Literary Magazine. Extinction Rebellion.

ELIZABETH WONG: Plays include: *Tam Tran Goes To Washington*, *Kimchee & Chitlins*, *Letters to a Student Revolutionary*, and *China Doll*. Her work has been produced at Cincinnati Playhouse in the Park, Victory Gardens Theater, Pan Asian Repertory Theatre, and East West Players. Honors include the Tanne Foundation Award for Artistic Achievement, and the Kennedy Center's David Mark Cohen National Playwriting Award. An alumna of New York University's Tisch School of the Arts, Ms. Wong was also a Disney Writing Fellow; Los Angeles Times Op-Ed columnist; and writer for the ABC sitcom *All-American Girl* starring Margaret Cho. She's a member of PEN, Dramatist Guild, and Writers Guild West. Currently, she teaches at Boston Conservatory@Berklee. elizabethwong.net

KHARI WYATT: Khari is the descendant of runaway slaves and inner-city America with its adversities, tragedies and triumphs; the son of high school sweethearts: a mother who is an artist and a father who courageously moved his young family from the rust-belt to our Nation's Capital to find a better life; the grandson of men who wore blue collars in auto plants and on railroad trains; the grandson of women who taught Sunday school and waitressed in greasy spoons. His work has placed in various competitions including: Disney/ABC Writers Fellowship, Sony Pictures Entertainment Diversity Writers Program, AMC One-Hour Drama competition, Austin Film Festival Screenplay Competition, and Writer's-for-Writer's Diversity Fellowship among others. His play *Some Type of Ecstasy* was a semifinalist for the Eugene O'Neill Theater Center's National Playwrights Conference. Wyatt is an alumnus of Howard University, earned an M.F.A. in Film from Columbia University in the City of New York, and also completed the Summer Legal Institute at Loyola Law School in Los Angeles. He is member of the ANTAEUS Playwrights Lab, Moving Arts and the Playwrights Union.

DIRECTORS

GIGI BERMINGHAM: At ANTAEUS: *Native Son*, *Cloud 9*, *Picnic*, *The Liar*, *The Seagull*, *Tonight at 8:30*, *Mother Courage*, *Pera Palas*, *Trial By Jury*. Directed *You Can't Take It With You*. Gigi received the 2013 L.A. Stage Alliance Ovation Award for Leading

Actress in a Play for her portrayal of Maria Callas in *Master Class* at International City Long Beach; and her solo comedy *Non-Vital Organs* received the L.A. Drama Critics Circle Natalie Schafer Award and an Ovation for Solo Performance. Gigi has also performed at the Kirk Douglas Theatre, La Mirada, Pasadena Playhouse, Old Globe, Rubicon, MainStreet, Skylight, Blank, Odyssey, Boston Court Pasadena, Playwrights' Arena, and New York's Public Theatre. TV appearances include: *Jane the Virgin*; *Marvel: Agents of Shield*; *Scandal*; *Mistresses*; *Chasing Life*; *Days of Our Lives*. Film: *Save the Date* and Rob Reiner's *Alex and Emma*. Web: *Kittens In A Cage* and *The Britishes*. Gigi Birmingham Studio: gigibermingham.com

JENNIFER CHANG: Jennifer Chang is a director, actor, and educator. Select Directing credits include: *Where the Mountain Meets the Moon* by Min Kahng (South Coast Rep), *Hannah and the Dread Gazebo* by Jiehae Park (Fountain Theatre), *Vietgone* by Qui Nguyen (LA DCC Award). Select new play development: Ashland New Plays Festival, Center Theatre Group, Boston Court Pasadena, Geffen Playhouse, Chance Theatre, Echo Theatre Company, Circle X Theatre Company, Chalk Rep, and East West Players. Other: 2020 APAFT Award, Alumnus Directors Lab West, Drama League NY Fellowship. Head of Undergraduate Acting at UCSD. Member: SDC, SAG-AFTRA, AEA. B.F.A.: NYU. M.F.A.: UCSD. More info: changinator.com

GREGG T. DANIEL: L.A. Premieres: *Her Portmanteau* (Boston Court Pasadena);

Br'er Cotton (Lower Depth Theatre); *Les Blancs* (Rogue Machine, Ovation nominated-Best Director); *Honky* (Rogue Machine). Other credits: *The Mountaintop*, *Lady Day at Emerson's Bar & Grill* (Garry Marshall Theatre); *A Raisin in The Sun* (A Noise Within, Ovation nominated- Best Director, Best Production); *Gem of the Ocean* (A Noise Within, Ovation nominated-Best Production). NAACP's Best Director, International City Theatre's *Fences* nominated-L.A. Drama Critics Circle, Ovation and StageScene LA awards. Graduate: NYU's Tisch School of the Arts. Faculty: USC's School of Dramatic Arts.

SAUNDRA MCCLAIN: A two-time Ovation Award nominee, with over 40 years professional experience in all levels of the Theater discipline, Ms. McClain has performed in numerous films, with several recurring and guest starring roles. She has performed or directed at such notable theaters as Kennedy Center, The Shakespeare Theatre in D.C., Shakespeare Santa Cruz, Alliance Theatre, Alley Theatre, Philadelphia Drama Guild, Two River Theatre, Musical Theatre West, Syracuse Stage, McCarter Theatre, A.R.T., Spoleto Festival, New York Shakespeare Theatre, 2nd Stage, N.E.C., New Federal Theatre, Classic Theatre Company, Hudson Guild, Billie Holiday Theatre, Coconut Grove, A Noise Within, ANTAEUS, (Lifetime member: The Actors Studio), Ensemble Theatre Company in Santa Barbara, Pomona College, Cal Lutheran University, CSU-Fullerton, Main St. Theatre, Sierra Madre Playhouse, Virginia Stage, and the Colony Theatre.

Currently, she is seeking her M.F.A. at CSU Fullerton. Member: SAG-AFTRA, AEA, SDC

MICHAEL A. SHEPPERD: Michael A. Shepperd is currently the Artistic Director of Los Angeles' multiple award-winning Celebration Theatre (CT). CT directing credits include: *The Boy From Oz*, *The Next Fairy Tale*, [title of show] and numerous others in his 14 year career at CT. Acting roles include *Fences* (Troy; Ovation, LADCC Nominations, Lead Actor); *Bootycandy* (Man 3; LADCC nom, Stage Raw Win, Lead Actor); *The Color Purple* (Mister; Ovation Nom, Lead Actor); *The Producers* (Roger DeBris; Ovation award nomination); *Steel* (John Henry, Ovation Award, Lead Actor), *Master Harold and the Boys* (Sam, NAACP nom, Lead Actor); *Intimate Apparel* (George, NAACP Theatre Award, Supporting Actor); *Choir Boy* (Headmaster, NAACP Theatre nom, Supporting Actor). Broadway/Off-Broadway/Regional credits include: *Cathy Rigby is Peter Pan* (Starkey), *Little Shop of Horrors* (Audrey Two), *Caroline, or Change* (Bus/Dryer), *5 Guys Named Moe* (Big Moe), *Smokey Joe's Cafe* (Fred) and *The Whipping Man* (Simon) TV: *Soul Man*, *Hot In Cleveland*, *Adopt-able*, *Wizards of Waverly Place*, *Monk*, *Criminal Minds*, *NCIS*.

BERNADETTE SPEAKES: Bernadette Speakes is excited to be returning for Season Two of *The Zip Code Plays*. She's had 20+ years in the industry. As an actor, she's performed in theaters throughout Los Angeles and the country. Her TV and film credits include performing in the Emmy Nominated show, *A Stage of our Own*, with James Earl Jones, and in *To*

Sir With Love II with Sidney Poitier. She also has a recurring guest star role on the CW's *All American*.

CREATIVE TEAM

BILL BROCHTRUP (ARTISTIC DIRECTOR): See Cast Bio.

TAYLOR ANNE CULLEN (PRODUCTION STAGE MANAGER): At ANTAEUS: *Measure for Measure*, *The Caucasian Chalk Circle*, *The Little Foxes*, *Native Son*. Other Theater: *Native Son* (Kirk Douglas Theatre); *Seven*, *How We're Different From Animals* (Élan Ensemble); *Alcina* (USC Thornton School of Music); *A Weekend with Pablo Picasso* (Casa 0101 Theatre); *The Kentucky Cycle*, *Mockingbird*, *Love and Information*, *That Long Damn Dark* (USC School of Dramatic Arts). Stage Management Internship credits include: *Tosca* (LA Opera); *Bull*, *Dutch Masters* (Rogue Machine Theatre); and *Annapurna* (The New Group). Taylor is a graduate of the University of Southern California's School of Dramatic Arts, B.F.A. in Stage Management.

RAMÓN DE OCAMPO (SERIES HOST): At ANTAEUS: *Measure for Measure*; *Henry IV, Part One* (Hal); *The Curse of Oedipus* (Oedipus); *Macbeth* (Banquo); *The Malcontent* (Mendoza); *King Lear* (Edgar); *Tonight at 8:30*; *Pera Palas*. Other LA Theater: *Girl Most Likely To*, *Sick* (Playwrights Arena); *Dogeaters*, *Much Ado About Nothing*, *Neva* (Kirk Douglas Theatre). Regional: NY Public, Delacorte, Kennedy Center, EST, Signature, Lincoln Center Lab,

NJSF, Ojai, O'Neill, Yale, South Coast Rep, La Jolla Playhouse, Ma-Yi, etc. Film: *Happy Endings*, *xXx: State of the Union*, *Hamlet*. TV: Recurring roles on *12 Monkeys*, *The West Wing*, *Medium*, *Killer Instinct*, *Sons of Anarchy*. Guest Star on *NCIS: New Orleans*, *Castle*, *Bones*, *CSI*, *NCIS*, and *Gang Related*. B.F.A., Carnegie Mellon. Awards: OBIE Award; Princess Grace Award. Narrator of more than a hundred audiobooks including the best selling *This is Where I Leave You* and the *Diary of a Wimpy Kid* series. He has won 8 AudioFile Audiobook Awards including "Best Voice."

JEFF GARDNER (AUDIO PRODUCER, SOUND DESIGNER, FOLEY ARTIST):

At ANTAEUS: *The Zip Code Plays Season One*, *Eight Nights*, *The Abuelas*, *The Caucasian Chalk Circle*, *Diana Of Dobson's*, *The Cripple Of Inishmaan*, *The Little Foxes*, *Native Son*, *The Hothouse*, *Cat On A Hot Tin Roof*, *Picnic*, *Wedding Band*. Other Theater: Geffen Playhouse, The Kirk Douglas Theatre, The Wallis Annenberg Center, A Noise Within, Boston Court Pasadena, Circle X Theatre, Echo Theater, Rogue Machine Theatre, Skylight Theatre, IAMA Theatre, Odyssey Theatre, The Colony Theatre, The Shakespeare Theatre, Arena Stage, The Kennedy Center, and Williamstown Theatre Festival. An Ovation Award-winning sound designer, Jeff can be seen at L.A. Theatre Works, where he regularly performs live sound effects, and is the resident sound designer for the Westridge School in Pasadena. jeffthomasgardner.net

ELLEN MANDEL (COMPOSER): Ellen Mandel is a composer of art songs and theater music. She has written songs

to poems by e.e. Cummings, Seamus Heaney, W.B. Yeats, Glyn Maxwell and more, sung by Todd Almond, Daniel Neer, and Jessica Crandall, and music for over 70 plays from Shakespeare to Stoppard.

ANA ROSE O'HALLORAN (PRODUCING EXECUTIVE DIRECTOR):

Ana Rose is in her sixth season at ANTAEUS. From 2012-2015, she served as the director of development and then Senior Director at The Pablove Foundation. From 2008-2012, she worked in various roles in the development department at Center Theatre Group. She received her M.F.A. in Theatre Management from California State University, Long Beach and a B.F.A. in Theatre Management and a B.F.A. in Performance from Ohio University.

KITTY SWINK (ARTISTIC DIRECTOR):

At ANTAEUS: *The Cripple of Inishmaan*; *Picnic*; *Macbeth*; *Tonight at 8:30*; *The Curse of Oedipus*. LA Theater: The Matrix Theatre Company; A Noise Within; The Tiffany; Odyssey Theatre Ensemble; Andak Stage Company. She has been nominated for many local theater awards. She has also worked in the regional theater. TV: *South of Nowhere* (recurring); *For the People*; *Nikki & Nora*; and guested on *The Fosters*, *Monk*, *Leverage*, *Harry's Law*, *The Riches*, *Crossing Jordan*, multiple episodes of *Star Trek: Deep Space Nine* and *Judging Amy*, among others. Feature films include the soon to be released *The Long Shadow*.

DIEGO TAPIA (AUDIO EDITOR):

Diego Tapia is a podcast producer and editor. He's currently working

for Propagate's *The Office Deep Dive* with Brian Baumgartner and recently completed Spotify's *An Oral History of The Office* as an assistant editor. Prior to Propagate, Diego worked on a few short and feature-length films including *A Thousand Little Cuts* and *Becoming Eddie*, and was an intern for Smart Post Sound, an audio post-production company that has worked on shows such as *NCIS: New Orleans*, *Flash*, *Modern Family*, etc. He graduated from Cal State Northridge in May 2020 with a B.A. in Cinema and Television Arts.

GO ON AN ADVENTURE WITH
ANTAEUS THEATRE COMPANY

STAHL HOUSE

ECHO PARK LAKE

CRENSHAW-IMPERIAL LIBRARY

MURAL MILE

LANKERSHIM TRAIN DEPOT

CASCADES PARK

Take a tour of the Zip Codes featured in
The Zip Code Plays. Visit
zipcodeplays.org for more info.



SUPPORT ANTAEUS

Theatre Company

the **TRANSFORMATIVE POWER** of LIVE THEATER

The Antaeus mission and programming are driven by the belief that theater changes lives and our community for the better. This work is made possible by the support of patrons and fans like you!

Support Antaeus with a gift of any amount (either as a one-time donation or a recurring pledge), or join our “crew” with a gift at any of these levels:

- **STAGE CREW LEVELS: \$100 + / \$500 + / \$1,000 +**

Benefits include: Join the Antaeus Book Club, and be first in line to reserve tickets when we return to the theater!

- **DIRECTOR’S CIRCLE LEVELS: \$1,500 + / \$2,500 + / \$5,000 + / \$10,000 +**

Benefits include: Stage Crew benefits, Quarterly Donor Newsletter, and Special Event Invitations

- **PRODUCER’S CIRCLE LEVELS: \$15,000 + / \$25,000 + / \$50,000 +**

Benefits Include: All Stage Crew & Director’s Circle benefits, plus acknowledgement as a sponsor for the production of your choice, and eight tickets for opening night of your sponsored production.

Learn more at antaeus.org | Questions? Email alice@antaeus.org

MAKE A GIFT TODAY! Donate now: online at antaeus.org, by phone at 818.506.1983, or by mail to:

Antaeus Theatre Company, Kiki & David Gindler Performing Arts Center
110 East Broadway, Glendale, CA 91205

Antaeus Theatre Company is a 501(c)3 Non-Profit Organization. Tax ID: 95-4548826

Thank You to our Extended Family of Loyal Supporters

Antaeus is a unique community – a Company of dedicated artists illuminating the human experience through performance, training and outreach, rooted in values of creative freedom and artistic excellence. Although the last year has brought many challenges, it has also shown us, more clearly than ever, the inspiring generosity and dedication of this community.

From unique digital offerings like *The Zip Code Plays*, to the extraordinary live theater we are known for, to our ongoing Arts Education and community engagement programming, everything we do is made possible by the support of our donors. We are profoundly grateful for your belief in us and our work. Thank you!

Visit antaeus.org/support-us to join this list today!

If you have questions, or if you'd like to make a pledge, arrange a recurring gift, or inform us about a planned gift, contact Director of Development, Alice Johnston at alice@antaeus.org or 818.506.5436.

30TH ANNIVERSARY PLEDGES

Thank you to the following donors for making commitments in support of our 30th Anniversary Campaign in 2020/21:

Sonja Berggren & Patrick Seaver
Karen Frederiksen
Al Latham & Elaine Kramer
Mary Lambert
Kitty Swink & Armin Shimerman
Jack & Belinda Walker

Based on donations made between 5/1/20-5/17/21

PRODUCER'S CIRCLE

The Producer's Circle ensures we are never limited in our artistic pursuits on our stages. This group believes in sustained excellence and allows Antaeus to produce plays no matter the cast size or production needs.

\$50,000+

The Ahmanson Foundation
Kiki & David Gindler
Jerry & Terri Kohl
Los Angeles County Department of Arts and Culture
The Michael J. Connell Foundation

\$25,000+

Sonja Berggren & Patrick Seaver
Karen Frederiksen
Al Latham & Elaine Kramer
Mary Lambert
The Ralph M. Parsons Foundation
Kitty Swink & Armin Shimerman
Daniel Blinkoff & Tamlyn Tomita
Jack & Belinda Walker

\$15,000+

Amy Aquino & Drew McCoy
Elizabeth & Richard Berman*
Ruth Eliel & Bill Cooney
Rosemary A. Hernandez
Max Factor Family Foundation
Molly Munger & Steve English
Melinda Peterson & Phil Proctor**
The Shubert Foundation

Based on donations made between 5/1/20-5/17/21

**Gift directly supports Arts Education programming **Sustaining Monthly Donor*

DIRECTOR'S CIRCLE

The Director's Circle is a distinguished group of theater lovers who provide general operating support to Antaeus. In recognition of this support, they receive invitations to special events and VIP access to Antaeus' artists.

\$10,000+

City of Glendale

Melinda & Robert LeMoine**

Debra Thompson & Lawrence Riff

The Walt Disney Company

Foundation

Arlene Vidor

\$5,000+

Anonymous

Jim Beaver

Bill Brochtrup

The David Lee Foundation

Evie & John DiCiaccio

The Green Foundation

John & Beverly Stauffer Foundation*

Scott Fraser & Catherine Jurca

Anthony J. Oncidi

Performing Arts Readiness

The Philip and Muriel Berman

Foundation

Dan Putman

Jaye Scholl & Charlie Bohlen**

Laura A. Seigle

Joan Pirkle Smith & Kurtwood Smith

Reba & Geoffrey Thomas

R. Scott Thompson

April Webster

\$2,500+

Laura & Ira Behr

Jon Joyce & Susan Boyd Joyce

Dawn Didawick & Harry Groener**

Nancy Hancock Griffith*

F. Michael Horn Family Trust

The Millin Family

Michael Morrell

Richard Nathan**

Netflix

Cara Robertson

Larry Title & Ellen Shavelson

Jocelyn Towne & Simon Helberg

\$1,500+

The 6th Act

Steven Robman and Kathy Baker

Kahsaree & F. Kenneth Baldwin

Gigi Bermingham

Loraine Despres & Carleton Eastlake

Erin Broadhurst & Patrick Wenk-Wolff

Steven Warheit and Jean Christensen

Diane Glatt & David Holtz

J Robin Groves**

Paul M Holmes**

Anna Mathias & Alan Shearman

Kitty McNamee & Paul Lazarus

Bruce Merritt

Suzy Moser

Michael & April Murphy

Dan Oliverio**

Michael Oppenheim

Pasadena International Film Festival

Gwynne & Robert Pine**

Susie Schwarz & Stuart Berton

Richard Yaffe

Based on donations made between 5/1/20-5/17/21

**Gift directly supports Arts Education programming **Sustaining Monthly Donor*

STAGE CREW

Support the production of great plays, innovative arts education outreach,
and the training of the next generation of actors.

\$1,000+

Anonymous	Gordon Goldsmith	Suzanne & Ned
The Laura G. Berick Foundation	Susie Edberg & Allen Grogan	Schmidtke James Sutorius
Jenna Blaustein & Robert Leventer	Marlene & Bruce Larson	Theatre for a New Audience
Deborah & Andrew Bogen	Stephen O. Lesser	David & Deborah Trainer
Catherine Caplin	Pamela & Todd Littleworth	Wendy & Peter Van Norden
Chevron Humankind	Ana Rose & Grant O'Halloran	Willow Cabin Productions
Drs. Laurie Christensen & Colin Ma	The Peter Glenville Foundation	Patty Woo & Steven Poretzky
Debra Danner	Ronus Foundation	

\$500+

Amazon Associates	Melanie Hayes**	Jill Maglione & Paul Van Dorpe
Robert C. Anderson	Patricia and Richard Hughes	Dr. Marjorie Marks Fond and Richard Z. Fond
Alan Baral & Sharre Jacoby	Kahn Education Foundation	Amy Proctor and Lloyd Roberson II
Joni & Miles Benickes	Janice & Mark Kaspersen	Greg Shapton & Barbara Rugeley
Bill Butler**	William & Priscilla Kennedy	George & Carolyn Seitz Adam Smith**
Anne Gee Byrd	Deb Lacusta & Dan Castellaneta	Dr. Ligia & William Toutant
Karen Constine	Howard & Patrick Leder- Morrow	Lori and Marcelo Tubert
Kim & Anthony Cookson		
Barbara Durham**		
Carol Eliel and Tom Muller		
Robert Gordon		

\$100+

Anonymous	Christin Baker	Kathryn Bikle and Dan Weitekamp
Jehan F Agrama and Dwora Fried	Perry and Mary Bankston	The Bill & Melinda Gates Foundation
Sonja Alarr	Michael Barker**	Peter Binkow
Heather Allyn & Rob Nagle**	Martha & Bryan Bayer	Jane and Howard Boltz
Annet Arakelian	Barbara Bell	Isabel Boniface
David Aviom	Mary Lou Belli and Charles Dougherty	
	Elizabeth Berry	

Based on donations made between 5/1/20-5/17/21

**Gift directly supports Arts Education programming **Sustaining Monthly Donor*

\$100+ cont.

Joan Borgman & John Apicella**	Deutsche Bank Americas Foundation	Marcia Hanford
Mary Bower**	Paula & Art Devine	Sam Harris & Danny Jacobsen
Tony Boyd	Michael Didawick	Laurie Hasencamp & Mike Lurey
Kenneth Brady	Colleen Dodson Baker & Ray Baker	Michael Hegeman
Lance Brady	James Dougherty	Marilyn Hewitt
Kaite Brandt**	Kathleen & James Drummy	Shannon Holt
Marie and G Pop Brown	Zuzka and Peter Eggena	Catherine Hornstein
Marilyn & George Brumder	Janet Fahey	Katie Hotchkiss**
Bush Gottlieb	Jeanette Farr-Harkins	Marty and Merrilee Howard
Anne Gee Byrd	Lesley Fera & Ned Mochel	Carol Howell
Madelyn Cain	Ricka Fisher	Rosemary Huang**
Jane Carr	Jeanie Fiskin	Kevin Hudnell
Chancy Memorial Foundation	Bo Foxworth	Sheila and Milton Hyman Foundation
Karen Chiella**	James Freed	Ellen & Bill Ireland
Nanci Christopher	Alan Freeman	Tom Jacobson & Ramone Munoz
Cigna Foundation	Homer Frizzell	Matthew Jaeger
Andrew and Linda Cipes	Susan Futterman & Arnie Siegel	Janice Jafari
Paula Cizmar & Dan Cariaga	Barbara Gable	Sofia Alejandra Jaramillo
Porter and Dee Clary	Olga Garay-English**	Carol Mayo Jenkins
Stephanie & Dennis Cohen	Jeff Gardner & Dylan Jones	Andrew F. Johnson
Jean Collinsworth	Carlotta Glackin	Alice & Sam Johnston**
Comcast NBCUniversal Foundation	Deborah Glassman	Linda Kallan
Kathy Connell & Daryl Anderson	Kevin Goetz	Denise and David Kautter
John Ortega & Irene Cordoba	John Goldenberg	Molly Kazimiroff
Sandra Cruze**	Eric & Joyce Goldman	Kristine & Steven Klein
Sondra Currie & Alan J. Levi	Matthew Goldsby	Jack Kolosky
Diana Daves	Eve Gordon & Todd Waring	Kerry Korf
Angela J. Davis	Howard Gradet	Jeff & Renee Korn
Hugh Roberts & Rebecca Davis	Gretchen & Richard Grant	Hannah & Marshall Kramer
Andre de Toledo	Cathy & Jon Grayson	The Kroger Co. Foundation
Andrew R. DeMar Family Foundation	Matty Grondin	Monte and Valerie Kuklenski
	Margaret & Paul Grossman	Jim Lambert
	Margo Haas	Juliet Landau & Deverill Weekes
	Martha Hackett	Tom & Gloria Lang

Based on donations made between 5/1/20-5/17/21

**Gift directly supports Arts Education programming **Sustaining Monthly Donor*

\$100+ cont.

Joe & Ginny Lawton
 David and Carrie Lee
 Jason and Yvonne Lee
 Diane Lewis
 Katie Lindsay
 Elaine Lockhart-
 Mummery
 Sandi Logan
 Sharon & Daniel
 Lowenstein
 M.J.M. Maintenance Co.
 Will Mackenzie
 Catherine MacNeal
 Dory and Mark Magit
 Kate Maher
 Jennifer C. Maisel
 Alice & Leonard Maltin
 Abigail Marks**
 Nancy Marks
 Dr. Jeffrey Gale & Julane
 Marx
 Tony Amendola & Judith
 Marx
 Gail & Tony McBride
 Janeice McConnell
 Marilyn McIntyre
 Philip McKinley
 Timothy McMichens
 Stephanie McNamara &
 Robin Gammell
 Roberta Medford
 Desiree Mee Jung &
 Brandon Kruhm
 Myron Meisel
 Gregory Metzger
 Vera Mijojlic
 The Millikans**
 Kerry Mohnike**
 Maureen & Michael
 Murphy
 Michael Murray
 Beth & Jack Nagle
 Arianne Neumark

Catia Ojeda and Alex
 Goldberg
 Daniel Olivas
 Richard Ortega Miro
 Anahid & Ara Oshagan
 Linda Park Bess & Daniel
 Park Bess
 John Pasquin
 Ellis Greenfield & Mimi
 Pastine
 Laurel Patric
 Ron and Ann Paul
 Louise Peebles
 Michael Peretzian
 Don Pestana
 Steven & Susan Peterman
 Lissa & Dan Petersen
 Dale and Wendy
 Peterson
 Sarah Pillsbury
 Marilyn Plutae
 Deb Podus
 Theodore Porter
 Robert Postawko
 Jennifer Propper
 John Prosky
 Pamela Putnam
 Anna Quirino-Miranda
 Zej Radke**
 Lorna Raver
 Deborah Reed
 Rich Reinhart
 Ellen Rentz
 Andy & Irene Robinson
 John Allee & Kathleen
 Ross-Allee
 Eric Rudnick**
 Timothy & Jeanne Sakata
 Patterson
 Kris Salter
 Mark and Dianne Samsel
 Jackie Sanders
 Christine Sanders
 Lia Sargent

John Schuning & Gregory
 Ross**
 Richard Blinkoff & Sharon
 Schuster
 Ruth & David Seigle
 Steven Seliger
 Nayan Shah & Ken Foster
 Joanne Shimada
 Stephanie Shroyer
 Stuart Sigman
 John Sloan**
 Margaret & David Sloan
 Devon Sorvari & Steven
 Brand
 Patricia & Lawrence
 Sparks
 Margaret & Gary
 Spiecker
 Zane Stanley
 Janellen Steininger
 Michael Stone
 Patricia & Alan Story
 John & Sheila Suarez
 Ladd Sullivan
 Eileen T'Kaye & David
 Bischoff
 Millee Taggart-Ratcliffe**
 Judy & Mark Taylor
 Bonnie Thompson
 Sharon Thompson
 Dale E. Turner
 Laura Frankos Turtledove
 Monica Wahl
 William and Simone
 Warren
 Jon & Heidi Wenrick
 Laura Wernette
 Stanley & Laurie
 Whitcomb
 Jobeth Williams
 Patricia & Paul Willson
 Andy Wolk
 Kelvin Yu

Based on donations made between 5/1/20-5/17/21

**Gift directly supports Arts Education programming **Sustaining Monthly Donor*

Antaeus Staff

Producing Executive Director

Ana Rose O'Halloran

Artistic Directors

Bill Brochtrup, Kitty Swink

Director of Development

Alice Johnston

Director of Operations

Nicole Samsel

Executive Assistant

Jade Moujaes

Development Assistant

Isabel Ngo

Technical Director

Adam Meyer

Bookkeeper

Amy Michner

Casting Associate

Ann Noble

Publicist

Lucy Pollak

Antaeus Founders

Lillian Groag, Dakin Matthews

ANTAEUS BOARD OF DIRECTORS

David Gindler, Chair

Sonja Berggren

Stuart Berton

Charlie Bohlen

Bill Brochtrup

Bob Craft

Evie DiCiaccio

Ruth Eliel

Karen Frederiksen

Harry Groener

Tamara Krinsky

Mary Lambert

Melinda Eades LeMoine

Kwana Martinez

Desirée Mee Jung

Ana Rose O'Halloran

Ara Oshagan

Linda Park

Laura Seigle

Adam J. Smith

Kitty Swink

Reba Thomas

Debra Thompson

Jocelyn Towne

Peter Van Norden

Arlene Vidor

Jack Walker

April Webster

Ensemble Members

John Achorn, Bernard K. Addison, Rhonda Aldrich, John Allee, Heather Allyn,
Tony Amendola, John Apicella, Ben Atkinson, Tessa Auberjonois, Paul Baird,
Fran Bennett, Gigi Bermingham, Daniel Bess, Daniel Blinkoff, John Bobek, Andrew Borba,
Chad Borden, Christopher Breyer, Bill Brochtrup, Anne Gee Byrd, Nicholas Cagle,
Jane Carr, Jon Chaffin, Emily Chase, Kendra Chell, Shannon Lee Clair, Josh Clark,
Avery Clyde, Barry Creyton, Paul Culos, Nicholas D'Agosto, Gregg Daniel, Julia Davis,
Jason Delane Lee, John DeMita, Ramón de Ocampo, David DeSantos, Seamus Dever,
Etta Devine, Gabriel Diani, Dawn Didawick, Francia DiMase, Mark Doerr, Daniel Dorr,
Nike Doukas, Sarah Drew, Paul Eiding, Nicole Erb, Terry Evans, Scott Ferrara,
James Ferrero, Martin Ferrero, Karianne Flaathen, Julia Fletcher, Bo Foxworth,
Jeff Thomas Gardner, Matthew Goldsby, Robert Goldsby, Alexandra Goodman,
Eve Gordon, Emily Goss, Belen Greene, Ellis Greer, Harry Groener, Matthew Grondin,
Arye Gross, Tim Halligan, Simon Helberg, Steve Hofvendahl, Shannon Holt, Sally Hughes,
Alberto Isaac, Gregory Itzin, Antonio Jaramillo, Dylan Jones, Veralyn Jones,
Luis Kelly-Duarte, Connor Kelly-Eiding, Michael Kirby, Lily Knight, Tamara Krinsky,
Chelsea Kurtz, Adrian LaTourelle, Paul Lazarus, Jay Lee, Emily Lenkeit, Ian Littleworth,
Melanie Lora, Henri Lubatti, Jazzlyn K. Luckett, Aaron Lyons, Jill Maglione, Abigail Marks,
Leo Marks, Kwana Martinez, Anna Mathias, Kellie Matteson, Dakin Matthews,
Saundra McClain, Don R. McManus, Anne McNaughton, Mike McShane, Desirée Mee Jung,
Bill Mendieta, Peter Mendoza, Adam Meyer, Lynn Milgrim, Richard Miro, Elyse Mirto,
Rosalyn Mitchell, Ned Mochel, Rebecca Mozo, Rob Nagle, Ann Noble, Jeffrey Nordling,
Linda Park, Melinda Peterson, Robert Pine, Lawrence Pressman, Philip Proctor, John Prosky,
Deborah Puette, Anna Quirino-Miranda, Carolyn Ratteray, Lloyd Roberson II, Spencer Rowe,
Jeanne Sakata, Ned Schmidtke, Liza Seneca, Armin Shimerman, Stephanie Shroyer,
John Sloan, Adam J. Smith, Kurtwood Smith, Paul Stanko, Janelle Steininger, Joanna Strapp,
Susan Sullivan, James Sutorius, Elizabeth Swain, Joel Swetow, Kitty Swink, Jeanne Syquia,
Reba Thomas, R. Scott Thompson, Danielle Thorpe, Jeff Torres, Jocelyn Towne, Rebekah Tripp,
Marcelo Tubert, Peter Van Norden, Timothy Adam Venable, Geoffrey Wade, Todd Waring,
Patrick Wenk-Wolff, Laura Wernette, Amelia White, Karen Malina White, Abby Wilde,
Jules Willcox, Paul Willson, Alicia Wollerton, Kelvin Yu, Buck Zachary, Josh Zuckerman

Playwrights Lab Members

Sean Abley, Nayna Agrawal, Alex Alpharaoh, Terence Anthony, Stephen Apostolina,
Barbara Beery, Jennifer Berry, Diana Burbano, Jami Brandli, Peppur Chambers, Paula Cizmar,
Doug Cooney, Jihan Crowther, Angela J. Davis, Kevin Delin, Matthew Doherty,
Natalie Nicole Dressel, Jeanette Farr-Harkins, Alan Freeman, Cyndy Fujikawa, Alex Goldberg,
Franky Gonzalez, Deborah Hiett, Dan Hirsch, Aja Houston, Christina Hjelm, Karen Howes,
Karen Huie, Julianne Jigour, Jonathan Josephson, Luis Kelly-Duarte, Lisa Kenner-Grissom,
Carolyn Kras, Mildred Inez Lewis, Ali MacLean, Jennifer Maisel, Anna Mathias, Dakin Matthews,
Robert Menna, Alison Minami, Ed Napier, Ann Noble, Devon O'Brien, Tira Palmquist,
Chandler Patton, Jennifer Rowland, Eric Rudnick, Jeanne Sakata, Steve Serpas, Steve Shade,
Lori Tubert, Sarah Tuft, Stephanie Alison Walker, Ashley Rose Wellman, Elizabeth Wong,
Khari Wyatt, Marlow Wyatt